

MCAM / CD146 Antibody (aa84-189, clone 6C3E6)
Mouse Monoclonal Antibody
Catalog # ALS16191

Specification

MCAM / CD146 Antibody (aa84-189, clone 6C3E6) - Product Information

Application	IHC
Primary Accession	P43121
Reactivity	Human
Host	Mouse
Clonality	Monoclonal
Calculated MW	72kDa KDa

MCAM / CD146 Antibody (aa84-189, clone 6C3E6) - Additional Information

Gene ID 4162

Other Names

Cell surface glycoprotein MUC18, Cell surface glycoprotein P1H12, Melanoma cell adhesion molecule, Melanoma-associated antigen A32, Melanoma-associated antigen MUC18, S-endo 1 endothelial-associated antigen, CD146, MCAM, MUC18

Target/Specificity

Human MCAM / CD146

Reconstitution & Storage

Short term +4°C; Long term -20°C

Precautions

MCAM / CD146 Antibody (aa84-189, clone 6C3E6) is for research use only and not for use in diagnostic or therapeutic procedures.

MCAM / CD146 Antibody (aa84-189, clone 6C3E6) - Protein Information

Name MCAM

Synonyms MUC18

Function

Plays a role in cell adhesion, and in cohesion of the endothelial monolayer at intercellular junctions in vascular tissue. Its expression may allow melanoma cells to interact with cellular elements of the vascular system, thereby enhancing hematogeneous tumor spread. Could be an adhesion molecule active in neural crest cells during embryonic development. Acts as a surface receptor that triggers tyrosine phosphorylation of FYN and PTK2/FAK1, and a transient increase in the intracellular calcium concentration.

Cellular Location

Membrane; Single-pass type I membrane protein.

Tissue Location

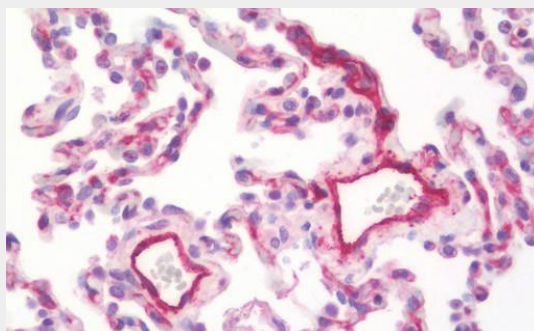
Detected in endothelial cells in vascular tissue throughout the body. May appear at the surface of neural crest cells during their embryonic migration. Appears to be limited to vascular smooth muscle in normal adult tissues. Associated with tumor progression and the development of metastasis in human malignant melanoma. Expressed most strongly on metastatic lesions and advanced primary tumors and is only rarely detected in benign melanocytic nevi and thin primary melanomas with a low probability of metastasis

MCAM / CD146 Antibody (aa84-189, clone 6C3E6) - Protocols

Provided below are standard protocols that you may find useful for product applications.

- [Western Blot](#)
- [Blocking Peptides](#)
- [Dot Blot](#)
- [Immunohistochemistry](#)
- [Immunofluorescence](#)
- [Immunoprecipitation](#)
- [Flow Cytometry](#)
- [Cell Culture](#)

MCAM / CD146 Antibody (aa84-189, clone 6C3E6) - Images



Anti-MCAM / CD146 antibody IHC staining of human lung.

MCAM / CD146 Antibody (aa84-189, clone 6C3E6) - Background

Plays a role in cell adhesion, and in cohesion of the endothelial monolayer at intercellular junctions in vascular tissue. Its expression may allow melanoma cells to interact with cellular elements of the vascular system, thereby enhancing hematogenous tumor spread. Could be an adhesion molecule active in neural crest cells during embryonic development. Acts as surface receptor that triggers tyrosine phosphorylation of FYN and PTK2/FAK1, and a transient increase in the intracellular calcium concentration.

MCAM / CD146 Antibody (aa84-189, clone 6C3E6) - References

- Lehmann J.M., et al. Proc. Natl. Acad. Sci. U.S.A. 86:9891-9895(1989).
Sers C., et al. Proc. Natl. Acad. Sci. U.S.A. 90:8514-8518(1993).
Solovey A.N., et al. J. Lab. Clin. Med. 138:322-331(2001).
Ota T., et al. Nat. Genet. 36:40-45(2004).
Totoki Y., et al. Submitted (MAR-2005) to the EMBL/GenBank/DDBJ databases.