

NELFA / WHSC2 Antibody (aa280-511, clone 6B11H8)
Mouse Monoclonal Antibody
Catalog # ALS16190

Specification

NELFA / WHSC2 Antibody (aa280-511, clone 6B11H8) - Product Information

Application	IHC, WB, IF
Primary Accession	O9H3P2
Reactivity	Human, Rat
Host	Mouse
Clonality	Monoclonal
Calculated MW	57kDa KDa

NELFA / WHSC2 Antibody (aa280-511, clone 6B11H8) - Additional Information

Gene ID 7469

Other Names

Negative elongation factor A, NELF-A, Wolf-Hirschhorn syndrome candidate 2 protein, NELFA, WHSC2

Target/Specificity

Human WHSC2

Reconstitution & Storage

Short term +4°C; Long term -20°C

Precautions

NELFA / WHSC2 Antibody (aa280-511, clone 6B11H8) is for research use only and not for use in diagnostic or therapeutic procedures.

NELFA / WHSC2 Antibody (aa280-511, clone 6B11H8) - Protein Information

Name NELFA

Synonyms WHSC2

Function

Essential component of the NELF complex, a complex that negatively regulates the elongation of transcription by RNA polymerase II. The NELF complex, which acts via an association with the DSIF complex and causes transcriptional pausing, is counteracted by the P-TEFb kinase complex.

Cellular Location

Nucleus.

Tissue Location

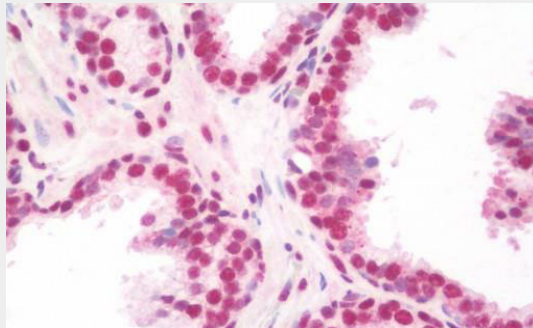
Ubiquitous. Expressed in heart, brain, placenta, liver, skeletal muscle, kidney and pancreas. Expressed at lower level in adult lung. Expressed in fetal brain, lung, liver and kidney

NELFA / WHSC2 Antibody (aa280-511, clone 6B11H8) - Protocols

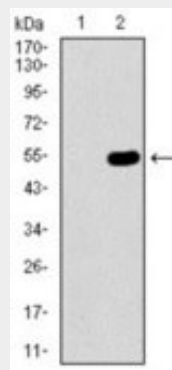
Provided below are standard protocols that you may find useful for product applications.

- [Western Blot](#)
- [Blocking Peptides](#)
- [Dot Blot](#)
- [Immunohistochemistry](#)
- [Immunofluorescence](#)
- [Immunoprecipitation](#)

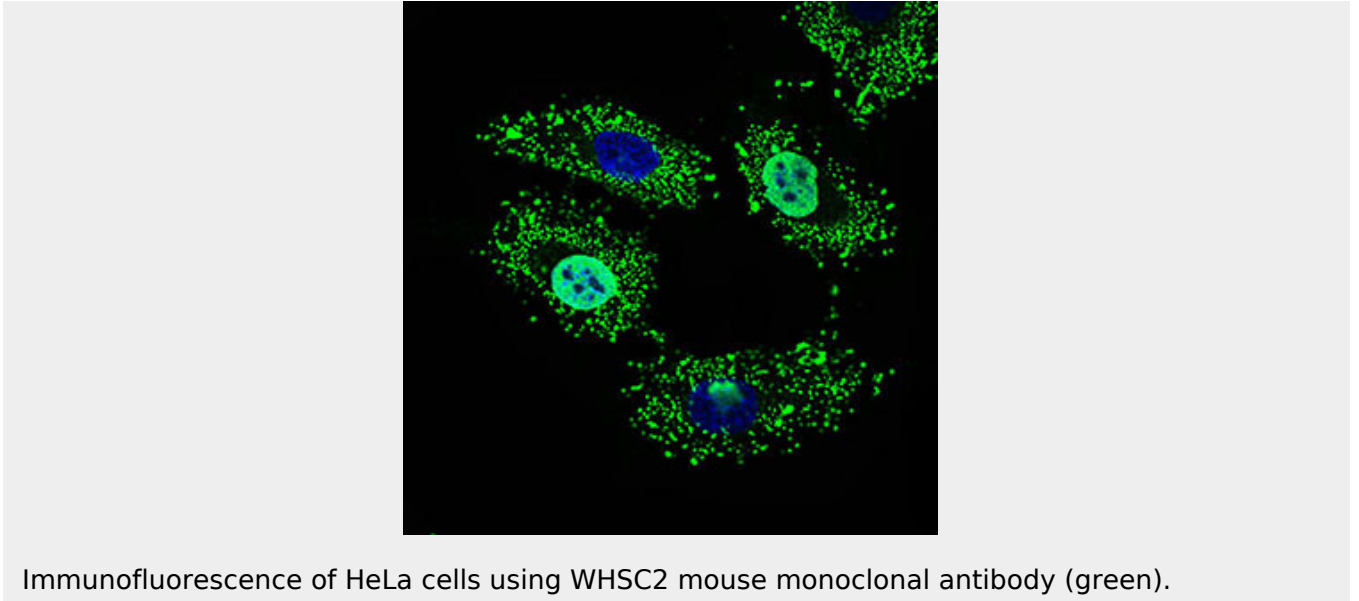
NELFA / WHSC2 Antibody (aa280-511, clone 6B11H8) - Images



Anti-NELFA / WHSC2 antibody IHC staining of human prostate.



Western blot using WHSC2 monoclonal antibody against HEK293 (1) and WHSC2 (AA: 280-511)-hlgGFc...



Immunofluorescence of HeLa cells using WHSC2 mouse monoclonal antibody (green).

NELFA / WHSC2 Antibody (aa280-511, clone 6B11H8) - Background

Essential component of the NELF complex, a complex that negatively regulates the elongation of transcription by RNA polymerase II. The NELF complex, which acts via an association with the DSIF complex and causes transcriptional pausing, is counteracted by the P-TEFb kinase complex. Probably required to interact with the RNA polymerase II complex.

NELFA / WHSC2 Antibody (aa280-511, clone 6B11H8) - References

Wright T.J.,et al.Genomics 59:203-212(1999).
Ito M.,et al.Cancer Res. 61:2038-2046(2001).
Mei G.,et al.Submitted (FEB-1999) to the EMBL/GenBank/DDBJ databases.
Ota T.,et al.Nat. Genet. 36:40-45(2004).
Hillier L.W.,et al.Nature 434:724-731(2005).