

HADHB Antibody
Rabbit Polyclonal Antibody
Catalog # ALS16170**Specification**

HADHB Antibody - Product Information

Application	IHC
Primary Accession	P55084
Reactivity	Human
Host	Rabbit
Clonality	Polyclonal
Calculated MW	51kDa KDa

HADHB Antibody - Additional Information

Gene ID 3032

Other Names

Trifunctional enzyme subunit beta, mitochondrial, TP-beta, 3-ketoacyl-CoA thiolase, 2.3.1.16, Acetyl-CoA acyltransferase, Beta-ketothiolase, HADHB

Target/Specificity

Human HADHB

Reconstitution & Storage

Aliquot and store at -20°C or -80°C. Avoid freeze-thaw cycles.

Precautions

HADHB Antibody is for research use only and not for use in diagnostic or therapeutic procedures.

HADHB Antibody - Protein Information

Name HADHB

Function

Mitochondrial trifunctional enzyme catalyzes the last three of the four reactions of the mitochondrial beta-oxidation pathway (PubMed: [29915090](http://www.uniprot.org/citations/29915090), PubMed: [30850536](http://www.uniprot.org/citations/30850536), PubMed: [8135828](http://www.uniprot.org/citations/8135828)). The mitochondrial beta-oxidation pathway is the major energy-producing process in tissues and is performed through four consecutive reactions breaking down fatty acids into acetyl-CoA (PubMed: [29915090](http://www.uniprot.org/citations/29915090)). Among the enzymes involved in this pathway, the trifunctional enzyme exhibits specificity for long-chain fatty acids (PubMed: [30850536](http://www.uniprot.org/citations/30850536)). Mitochondrial trifunctional enzyme is a heterotetrameric complex composed of two proteins, the trifunctional enzyme subunit alpha/HADHA carries the 2,3-enoyl-CoA hydratase and the 3-hydroxyacyl-CoA dehydrogenase activities, while the

trifunctional enzyme subunit beta/HADHB described here bears the 3- ketoacyl-CoA thiolase activity (PubMed:29915090, PubMed:30850536, PubMed:8135828).

Cellular Location

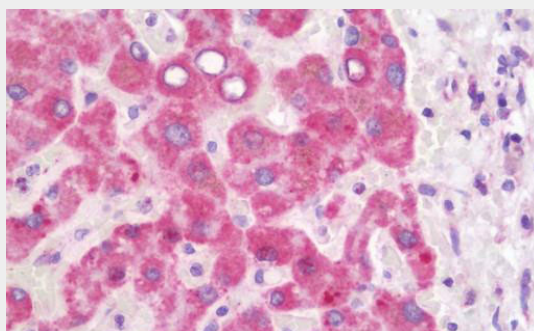
Mitochondrion. Mitochondrion inner membrane Mitochondrion outer membrane. Endoplasmic reticulum. Note=Protein stability and association with membranes require HADHA

HADHB Antibody - Protocols

Provided below are standard protocols that you may find useful for product applications.

- [Western Blot](#)
- [Blocking Peptides](#)
- [Dot Blot](#)
- [Immunohistochemistry](#)
- [Immunofluorescence](#)
- [Immunoprecipitation](#)
- [Flow Cytometry](#)
- [Cell Culture](#)

HADHB Antibody - Images



Anti-HADHB antibody IHC staining of human liver.

HADHB Antibody - References

Kamijo T.,et al.Biochem. Biophys. Res. Commun. 199:818-825(1994).
Orii K.E.,et al.Hum. Mol. Genet. 6:1215-1224(1997).
Liu B.,et al.Submitted (DEC-1998) to the EMBL/GenBank/DDBJ databases.
Ota T.,et al.Nat. Genet. 36:40-45(2004).
Hillier L.W.,et al.Nature 434:724-731(2005).