

MSLN / Mesothelin Antibody (Extracellular Domain, clone MN-1)
Mouse Monoclonal Antibody
Catalog # ALS16156

Specification

MSLN / Mesothelin Antibody (Extracellular Domain, clone MN-1) - Product Information

Application	WB
Primary Accession	O13421
Reactivity	Human
Host	Mouse
Clonality	Monoclonal
Calculated MW	69kDa KDa

MSLN / Mesothelin Antibody (Extracellular Domain, clone MN-1) - Additional Information

Gene ID 10232

Other Names

Mesothelin, CAK1 antigen, Pre-pro-megakaryocyte-potentiating factor, Megakaryocyte-potentiating factor, MPF, Mesothelin, cleaved form, MSLN, MPF

Target/Specificity

Cross reactivity with homologues from other sources has not been tested.

Reconstitution & Storage

Short term 4°C, long term aliquot and store at -20°C, avoid freeze thaw cycles.

Precautions

MSLN / Mesothelin Antibody (Extracellular Domain, clone MN-1) is for research use only and not for use in diagnostic or therapeutic procedures.

MSLN / Mesothelin Antibody (Extracellular Domain, clone MN-1) - Protein Information

Name MSLN

Synonyms MPF

Function

Membrane-anchored forms may play a role in cellular adhesion.

Cellular Location

Cell membrane; Lipid-anchor, GPI-anchor. Golgi apparatus [Isoform 3]: Secreted.

Tissue Location

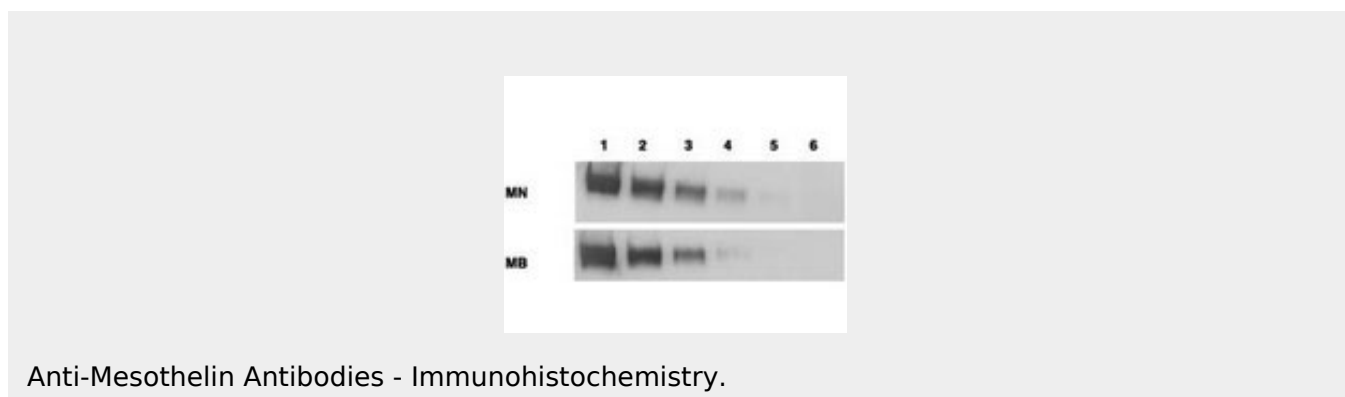
Expressed in lung. Expressed at low levels in heart, placenta and kidney. Expressed in mesothelial cells. Highly expressed in mesotheliomas, ovarian cancers, and some squamous cell carcinomas (at protein level).

MSLN / Mesothelin Antibody (Extracellular Domain, clone MN-1) - Protocols

Provided below are standard protocols that you may find useful for product applications.

- [Western Blot](#)
- [Blocking Peptides](#)
- [Dot Blot](#)
- [Immunohistochemistry](#)
- [Immunofluorescence](#)
- [Immunoprecipitation](#)
- [Flow Cytometry](#)
- [Cell Culture](#)

MSLN / Mesothelin Antibody (Extracellular Domain, clone MN-1) - Images



MSLN / Mesothelin Antibody (Extracellular Domain, clone MN-1) - Background

Membrane-anchored forms may play a role in cellular adhesion.

MSLN / Mesothelin Antibody (Extracellular Domain, clone MN-1) - References

- Kojima T., et al. J. Biol. Chem. 270:21984-21990(1995).
Chang K., et al. Proc. Natl. Acad. Sci. U.S.A. 93:136-140(1996).
Muminova Z.E., et al. BMC Cancer 4:19-19(2004).
Ho M., et al. Clin. Cancer Res. 11:3814-3820(2005).
Daniels R.J., et al. Hum. Mol. Genet. 10:339-352(2001).