

CXCL10 / IP-10 Antibody (aa22-98)
Rabbit Polyclonal Antibody
Catalog # ALS16131**Specification**

CXCL10 / IP-10 Antibody (aa22-98) - Product Information

Application	WB
Primary Accession	P02778
Reactivity	Human
Host	Rabbit
Clonality	Polyclonal
Calculated MW	11kDa KDa

CXCL10 / IP-10 Antibody (aa22-98) - Additional Information**Gene ID** 3627**Other Names**

C-X-C motif chemokine 10, 10 kDa interferon gamma-induced protein, Gamma-IP10, IP-10, Small-inducible cytokine B10, CXCL10(1-73), CXCL10, INP10, SCYB10

Target/Specificity

Human IP-10 / CXCL10.

Reconstitution & Storage

Store at -20°C for up to one year.

Precautions

CXCL10 / IP-10 Antibody (aa22-98) is for research use only and not for use in diagnostic or therapeutic procedures.

CXCL10 / IP-10 Antibody (aa22-98) - Protein Information**Name** CXCL10**Synonyms** INP10, SCYB10**Function**

Pro-inflammatory cytokine that is involved in a wide variety of processes such as chemotaxis, differentiation, and activation of peripheral immune cells, regulation of cell growth, apoptosis and modulation of angiostatic effects (PubMed: [11157474](http://www.uniprot.org/citations/11157474), PubMed: [22652417](http://www.uniprot.org/citations/22652417), PubMed: [7540647](http://www.uniprot.org/citations/7540647)). Plays thereby an important role during viral infections by stimulating the activation and migration of immune cells to the infected sites (By similarity). Mechanistically, binding of CXCL10 to the CXCR3 receptor activates G protein-mediated signaling and results in downstream activation of phospholipase C-dependent pathway, an increase in intracellular calcium production and actin reorganization (PubMed:

href="http://www.uniprot.org/citations/12750173" target="_blank">12750173, PubMed:19151743). In turn, recruitment of activated Th1 lymphocytes occurs at sites of inflammation (PubMed:12663757, PubMed:12750173). Activation of the CXCL10/CXCR3 axis also plays an important role in neurons in response to brain injury for activating microglia, the resident macrophage population of the central nervous system, and directing them to the lesion site. This recruitment is an essential element for neuronal reorganization (By similarity).

Cellular Location

Secreted.

Tissue Location

Mainly secreted by monocytes, endothelial cells as well as fibroblasts. Expressed by epithelial cells in thymus (PubMed:11157474). Microglial cells produce CXCL10 in response to viral stimulation (PubMed:12663757).

Volume

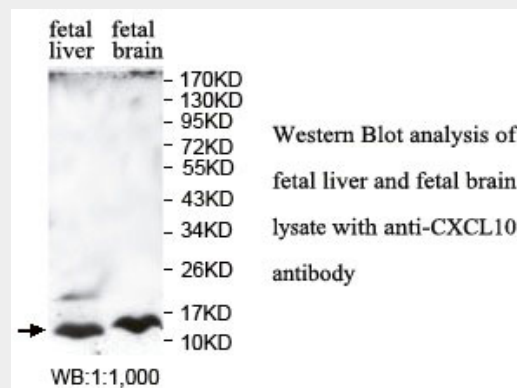
50 μ l

CXCL10 / IP-10 Antibody (aa22-98) - Protocols

Provided below are standard protocols that you may find useful for product applications.

- [Western Blot](#)
- [Blocking Peptides](#)
- [Dot Blot](#)
- [Immunohistochemistry](#)
- [Immunofluorescence](#)
- [Immunoprecipitation](#)
- [Flow Cytometry](#)
- [Cell Culture](#)

CXCL10 / IP-10 Antibody (aa22-98) - Images



0

CXCL10 / IP-10 Antibody (aa22-98) - Background

Chemotactic for monocytes and T-lymphocytes. Binds to CXCR3.

CXCL10 / IP-10 Antibody (aa22-98) - References

- Luster A.D.,et al.Nature 315:672-676(1985).
Proost P.,et al.J. Immunol. 150:1000-1010(1993).
Tensen C.P.,et al.J. Invest. Dermatol. 112:716-722(1999).
Hensbergen P.J.,et al.Eur. J. Biochem. 268:4992-4999(2001).
Loos T.,et al.Blood 112:2648-2656(2008).