

ABCC2 Antibody (aa977-1026)
Rabbit Polyclonal Antibody
Catalog # ALS16119**Specification**

ABCC2 Antibody (aa977-1026) - Product Information

Application	WB, IHC
Primary Accession	O92887
Reactivity	Human
Host	Rabbit
Clonality	Polyclonal
Calculated MW	174kDa KDa

ABCC2 Antibody (aa977-1026) - Additional Information**Gene ID** 1244**Other Names**

Canalicular multispecific organic anion transporter 1, ATP-binding cassette sub-family C member 2, Canalicular multidrug resistance protein, Multidrug resistance-associated protein 2, ABCC2, CMOAT, CMOAT1, CMRP, MRP2

Target/Specificity

ABCC2 Antibody antibody detects endogenous levels of ABCC2.

Reconstitution & Storage

Store at -20°C.

Precautions

ABCC2 Antibody (aa977-1026) is for research use only and not for use in diagnostic or therapeutic procedures.

ABCC2 Antibody (aa977-1026) - Protein Information**Name** ABCC2 ([HGNC:53](#))**Function**

ATP-dependent transporter of the ATP-binding cassette (ABC) family that binds and hydrolyzes ATP to enable active transport of various substrates including many drugs, toxicants and endogenous compound across cell membranes. Transports a wide variety of conjugated organic anions such as sulfate-, glucuronide- and glutathione (GSH)- conjugates of endo- and xenobiotics substrates (PubMed: [10220572](http://www.uniprot.org/citations/10220572), PubMed: [10421658](http://www.uniprot.org/citations/10421658), PubMed: [11500505](http://www.uniprot.org/citations/11500505), PubMed: [16332456](http://www.uniprot.org/citations/16332456)). Mediates hepatobiliary excretion of mono- and bis-glucuronidated bilirubin molecules and therefore play an important role in bilirubin detoxification (PubMed: [10421658](http://www.uniprot.org/citations/10421658)). Mediates

also hepatobiliary excretion of others glucuronide conjugates such as 17beta-estradiol 17-glucosiduronic acid and leukotriene C4 (PubMed:11500505). Transports sulfated bile salt such as tauroolithocholate sulfate (PubMed:16332456). Transports various anticancer drugs, such as anthracycline, vinca alkaloid and methotrexate and HIV-drugs such as protease inhibitors (PubMed:10220572, PubMed:11500505, PubMed:12441801). Confers resistance to several anti-cancer drugs including cisplatin, doxorubicin, epirubicin, methotrexate, etoposide and vincristine (PubMed:10220572, PubMed:11500505).

Cellular Location

Apical cell membrane; Multi-pass membrane protein. Note=Localized to the apical membrane of enterocytes

Tissue Location

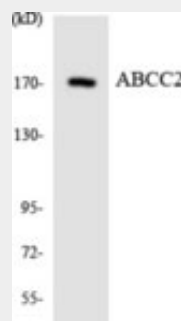
Expressed by polarized cells in liver, kidney and intestine. The highest expression is found in liver. Expressed in small intestine (PubMed:28408210).

ABCC2 Antibody (aa977-1026) - Protocols

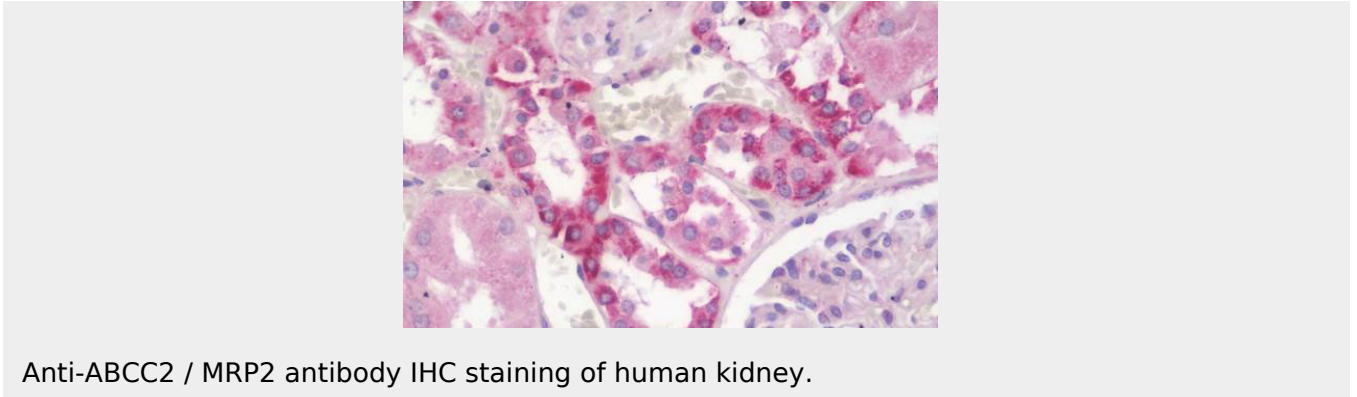
Provided below are standard protocols that you may find useful for product applications.

- [Western Blot](#)
- [Blocking Peptides](#)
- [Dot Blot](#)
- [Immunohistochemistry](#)
- [Immunofluorescence](#)
- [Immunoprecipitation](#)
- [Flow Cytometry](#)
- [Cell Culture](#)

ABCC2 Antibody (aa977-1026) - Images



Western blot of the lysates from HeLa cells using ABCC2 antibody.



Anti-ABCC2 / MRP2 antibody IHC staining of human kidney.

ABCC2 Antibody (aa977-1026) - Background

Mediates hepatobiliary excretion of numerous organic anions. May function as a cellular cisplatin transporter.

ABCC2 Antibody (aa977-1026) - References

- Taniguchi K.,et al.Cancer Res. 56:4124-4129(1996).
Kool M.,et al.Submitted (FEB-1996) to the EMBL/GenBank/DDBJ databases.
Buechler M.,et al.J. Biol. Chem. 271:15091-15098(1996).
Keppler D.,et al.Submitted (AUG-1996) to the EMBL/GenBank/DDBJ databases.
Tsuji H.,et al.Gastroenterology 117:653-660(1999).