

SERPINA1 / Alpha 1 Antitrypsin Antibody (clone 11G2)
Mouse Monoclonal Antibody
Catalog # ALS16068**Specification**

SERPINA1 / Alpha 1 Antitrypsin Antibody (clone 11G2) - Product Information

Application	WB
Primary Accession	P01009
Reactivity	Human, Monkey, Dog
Host	Mouse
Clonality	Monoclonal
Calculated MW	47kDa KDa

SERPINA1 / Alpha 1 Antitrypsin Antibody (clone 11G2) - Additional Information**Gene ID** 5265**Other Names**

Alpha-1-antitrypsin, Alpha-1 protease inhibitor, Alpha-1-antiproteinase, Serpin A1, Short peptide from AAT, SPAAT, SERPINA1, AAT, PI

Target/Specificity

Human SERPINA1 / Alpha 1 Antitrypsin

Reconstitution & Storage

Store at -20°C. Minimize freezing and thawing.

Precautions

SERPINA1 / Alpha 1 Antitrypsin Antibody (clone 11G2) is for research use only and not for use in diagnostic or therapeutic procedures.

SERPINA1 / Alpha 1 Antitrypsin Antibody (clone 11G2) - Protein Information**Name** SERPINA1 ([HGNC:8941](#))**Synonyms** AAT, PI**Function**

Inhibitor of serine proteases. Its primary target is elastase, but it also has a moderate affinity for plasmin and thrombin. Irreversibly inhibits trypsin, chymotrypsin and plasminogen activator. The aberrant form inhibits insulin-induced NO synthesis in platelets, decreases coagulation time and has proteolytic activity against insulin and plasmin.

Cellular Location

Secreted. Endoplasmic reticulum. Note=The S and Z allele are not secreted effectively and accumulate intracellularly in the endoplasmic reticulum

Tissue Location

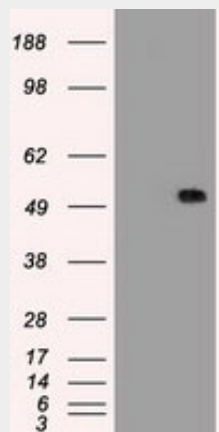
Ubiquitous. Expressed in leukocytes and plasma.

SERPINA1 / Alpha 1 Antitrypsin Antibody (clone 11G2) - Protocols

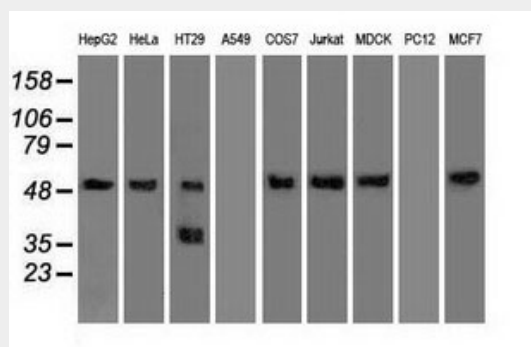
Provided below are standard protocols that you may find useful for product applications.

- [Western Blot](#)
- [Blocking Peptides](#)
- [Dot Blot](#)
- [Immunohistochemistry](#)
- [Immunofluorescence](#)
- [Immunoprecipitation](#)
- [Flow Cytometry](#)
- [Cell Culture](#)

SERPINA1 / Alpha 1 Antitrypsin Antibody (clone 11G2) - Images



HEK293T cells were transfected with the pCMV6-ENTRY control (Left lane) or pCMV6-ENTRY SERPINA1...



Western blot of extracts (35 ug) from 9 different cell lines by using anti-SERPINA1 monoclonal...

SERPINA1 / Alpha 1 Antitrypsin Antibody (clone 11G2) - Background

Inhibitor of serine proteases. Its primary target is elastase, but it also has a moderate affinity for plasmin and thrombin. Irreversibly inhibits trypsin, chymotrypsin and plasminogen activator. The aberrant form inhibits insulin-induced NO synthesis in platelets, decreases coagulation time and has proteolytic activity against insulin and plasmin.

SERPINA1 / Alpha 1 Antitrypsin Antibody (clone 11G2) - References

- Bollen A.,et al.DNA 2:255-264(1983).
Long G.L.,et al.Biochemistry 23:4828-4837(1984).
Rosenberg S.,et al.Nature 312:77-80(1984).
Ciliberto G.,et al.Cell 41:531-540(1985).
Nukiwa T.,et al.J. Biol. Chem. 261:15989-15994(1986).