

MME / CD10 Antibody (clone G27-P)
Rabbit Polyclonal Antibody
Catalog # ALS16054**Specification**

MME / CD10 Antibody (clone G27-P) - Product Information

Application	IHC
Primary Accession	P08473
Reactivity	Human
Host	Rabbit
Clonality	Polyclonal
Calculated MW	86kDa KDa

MME / CD10 Antibody (clone G27-P) - Additional Information**Gene ID** 4311**Other Names**

Neprilysin, 3.4.24.11, Atriopeptidase, Common acute lymphocytic leukemia antigen, CALLA, Enkephalinase, Neutral endopeptidase 24.11, NEP, Neutral endopeptidase, Skin fibroblast elastase, SFE, CD10, MME, EPN

Reconstitution & Storage

+4°C, avoid freezing

Precautions

MME / CD10 Antibody (clone G27-P) is for research use only and not for use in diagnostic or therapeutic procedures.

MME / CD10 Antibody (clone G27-P) - Protein Information**Name** MME {ECO:0000303|PubMed:27588448, ECO:0000312|HGNC:HGNC:7154}**Function**

Thermolysin-like specificity, but is almost confined on acting on polypeptides of up to 30 amino acids (PubMed: [15283675](http://www.uniprot.org/citations/15283675)), PubMed: [6208535](http://www.uniprot.org/citations/6208535), PubMed: [6349683](http://www.uniprot.org/citations/6349683), PubMed: [8168535](http://www.uniprot.org/citations/8168535)). Biologically important in the destruction of opioid peptides such as Met- and Leu-enkephalins by cleavage of a Gly-Phe bond (PubMed: [17101991](http://www.uniprot.org/citations/17101991), PubMed: [6349683](http://www.uniprot.org/citations/6349683)). Catalyzes cleavage of bradykinin, substance P and neurotensin peptides (PubMed: [6208535](http://www.uniprot.org/citations/6208535)). Able to cleave angiotensin-1, angiotensin-2 and angiotensin 1-9 (PubMed: [15283675](http://www.uniprot.org/citations/15283675), PubMed: [6349683](http://www.uniprot.org/citations/6349683)). Involved in the

degradation of atrial natriuretic factor (ANF) and brain natriuretic factor (BNP(1-32)) (PubMed:16254193, PubMed:2531377, PubMed:2972276). Displays UV-inducible elastase activity toward skin preelastic and elastic fibers (PubMed:20876573).

Cellular Location

Cell membrane; Single-pass type II membrane protein

Volume

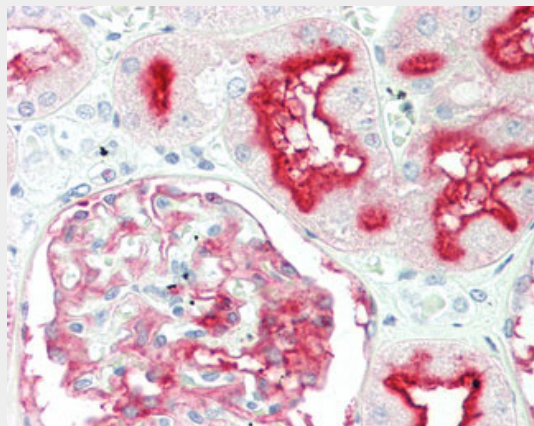
50 µl

MME / CD10 Antibody (clone G27-P) - Protocols

Provided below are standard protocols that you may find useful for product applications.

- [Western Blot](#)
- [Blocking Peptides](#)
- [Dot Blot](#)
- [Immunohistochemistry](#)
- [Immunofluorescence](#)
- [Immunoprecipitation](#)
- [Flow Cytometry](#)
- [Cell Culture](#)

MME / CD10 Antibody (clone G27-P) - Images



Anti-MME / CD10 antibody IHC staining of human kidney.

MME / CD10 Antibody (clone G27-P) - Background

Thermolysin-like specificity, but is almost confined on acting on polypeptides of up to 30 amino acids (PubMed:15283675, PubMed:8168535). Biologically important in the destruction of opioid peptides such as Met- and Leu-enkephalins by cleavage of a Gly-Phe bond (PubMed:17101991). Able to cleave angiotensin-1, angiotensin-2 and angiotensin 1-9 (PubMed:15283675). Involved in the degradation of atrial natriuretic factor (ANF) (PubMed:2531377, PubMed:2972276). Displays UV-inducible elastase activity toward skin preelastic and elastic fibers (PubMed:20876573).

MME / CD10 Antibody (clone G27-P) - References

Letarte M.,et al.J. Exp. Med. 168:1247-1253(1988).
Shipp M.A.,et al.Proc. Natl. Acad. Sci. U.S.A. 85:4819-4823(1988).
D'Adamio L.,et al.Proc. Natl. Acad. Sci. U.S.A. 86:7103-7107(1989).
Ota T.,et al.Nat. Genet. 36:40-45(2004).
Mural R.J.,et al.Submitted (SEP-2005) to the EMBL/GenBank/DDBJ databases.