

**KRT18 / CK18 / Cytokeratin 18 Antibody (clone DC-10, Azide-free)**  
**Mouse Monoclonal Antibody**  
**Catalog # ALS16044**

**Specification**

---

**KRT18 / CK18 / Cytokeratin 18 Antibody (clone DC-10, Azide-free) - Product Information**

|                   |                        |
|-------------------|------------------------|
| Application       | IHC                    |
| Primary Accession | <a href="#">P05783</a> |
| Reactivity        | Human                  |
| Host              | Mouse                  |
| Clonality         | Monoclonal             |
| Calculated MW     | 48kDa KDa              |

**KRT18 / CK18 / Cytokeratin 18 Antibody (clone DC-10, Azide-free) - Additional Information**

**Gene ID** 3875

**Other Names**

Keratin, type I cytoskeletal 18, Cell proliferation-inducing gene 46 protein, Cytokeratin-18, CK-18, Keratin-18, K18, KRT18, CYK18

**Reconstitution & Storage**

Stable for 36 months when stored at or below 0°C.

**Precautions**

KRT18 / CK18 / Cytokeratin 18 Antibody (clone DC-10, Azide-free) is for research use only and not for use in diagnostic or therapeutic procedures.

**KRT18 / CK18 / Cytokeratin 18 Antibody (clone DC-10, Azide-free) - Protein Information**

**Name** KRT18

**Synonyms** CYK18

**Function**

Involved in the uptake of thrombin-antithrombin complexes by hepatic cells (By similarity). When phosphorylated, plays a role in filament reorganization. Involved in the delivery of mutated CFTR to the plasma membrane. Together with KRT8, is involved in interleukin-6 (IL-6)-mediated barrier protection.

**Cellular Location**

Nucleus matrix {ECO:0000250|UniProtKB:Q5BJY9}. Cytoplasm, perinuclear region. Nucleus, nucleolus. Cytoplasm {ECO:0000250|UniProtKB:Q5BJY9}

**Tissue Location**

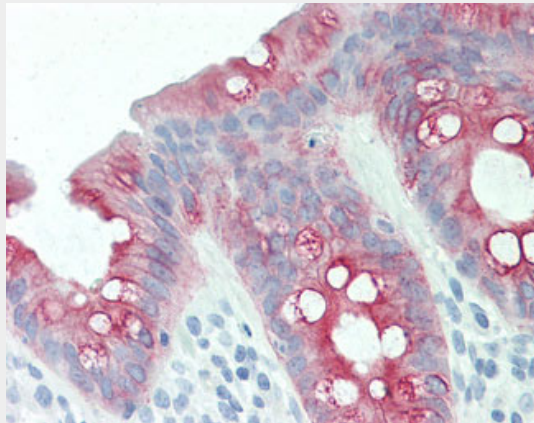
Expressed in colon, placenta, liver and very weakly in exocervix. Increased expression observed in lymph nodes of breast carcinoma.

## **KRT18 / CK18 / Cytokeratin 18 Antibody (clone DC-10, Azide-free) - Protocols**

Provided below are standard protocols that you may find useful for product applications.

- [Western Blot](#)
- [Blocking Peptides](#)
- [Dot Blot](#)
- [Immunohistochemistry](#)
- [Immunofluorescence](#)
- [Immunoprecipitation](#)
- [Flow Cytometry](#)
- [Cell Culture](#)

## **KRT18 / CK18 / Cytokeratin 18 Antibody (clone DC-10, Azide-free) - Images**



Anti-KRT18 / CK18 / Cytokeratin 18 antibody IHC staining of human colon.



Anti-KRT18 / CK18 / Cytokeratin 18 antibody IHC staining of human prostate.

## **KRT18 / CK18 / Cytokeratin 18 Antibody (clone DC-10, Azide-free) - Background**

Involved in the uptake of thrombin-antithrombin complexes by hepatic cells (By similarity). When phosphorylated, plays a role in filament reorganization. Involved in the delivery of mutated CFTR to the plasma membrane. Together with KRT8, is involved in interleukin-6 (IL-6)-mediated barrier protection.

## **KRT18 / CK18 / Cytokeratin 18 Antibody (clone DC-10, Azide-free) - References**

Oshima R.G.,et al.Differentiation 33:61-68(1986).  
Kim J.W.,et al.Submitted (SEP-2004) to the EMBL/GenBank/DDBJ databases.  
Kalnine N.,et al.Submitted (OCT-2004) to the EMBL/GenBank/DDBJ databases.  
Suzuki Y.,et al.Submitted (APR-2005) to the EMBL/GenBank/DDBJ databases.  
Kulesh D.A.,et al.Mol. Cell. Biol. 8:1540-1550(1988).