

MMP9 / Gelatinase B Antibody (Internal)
Rabbit Polyclonal Antibody
Catalog # ALS16033**Specification**

MMP9 / Gelatinase B Antibody (Internal) - Product Information

Application	WB, IF
Primary Accession	P14780
Reactivity	Human, Mouse, Rat
Host	Rabbit
Clonality	Polyclonal
Calculated MW	78kDa KDa

MMP9 / Gelatinase B Antibody (Internal) - Additional Information**Gene ID** 4318**Other Names**

Matrix metalloproteinase-9, MMP-9, 3.4.24.35, 92 kDa gelatinase, 92 kDa type IV collagenase, Gelatinase B, GELB, 67 kDa matrix metalloproteinase-9, 82 kDa matrix metalloproteinase-9, MMP9, CLG4B

Target/Specificity

MMP9 antibody is human, mouse and rat reactive. At least three isoforms of MMP9 are known to exist; this antibody only recognizes the two longest isoforms.

Reconstitution & Storage

Long term: -20°C; Short term: +4°C. Avoid repeat freeze-thaw cycles.

Precautions

MMP9 / Gelatinase B Antibody (Internal) is for research use only and not for use in diagnostic or therapeutic procedures.

MMP9 / Gelatinase B Antibody (Internal) - Protein Information**Name** MMP9**Synonyms** CLG4B**Function**

Matrix metalloproteinase that plays an essential role in local proteolysis of the extracellular matrix and in leukocyte migration (PubMed: [12879005](http://www.uniprot.org/citations/12879005), PubMed: [1480034](http://www.uniprot.org/citations/1480034), PubMed: [2551898](http://www.uniprot.org/citations/2551898)). Could play a role in bone osteoclastic resorption (By similarity). Cleaves KiSS1 at a Gly-|-Leu bond (PubMed: [12879005](http://www.uniprot.org/citations/12879005)). Cleaves NINJ1 to generate the Secreted ninjurin-1 form (PubMed: [32883094](http://www.uniprot.org/citations/32883094)).

Cleaves type IV and type V collagen into large C-terminal three quarter fragments and shorter N-terminal one quarter fragments (PubMed:1480034). Degrades fibronectin but not laminin or Pz-peptide.

Cellular Location

Secreted, extracellular space, extracellular matrix

Tissue Location

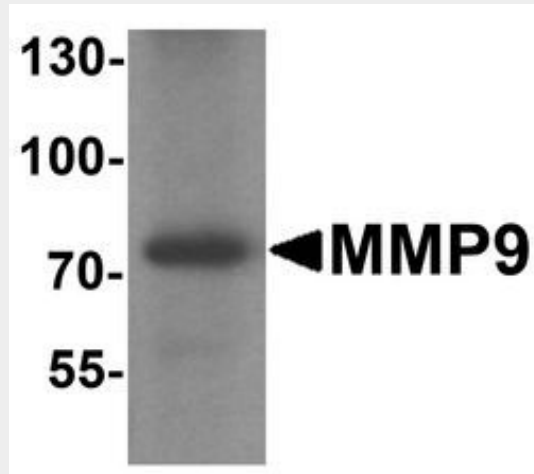
Detected in neutrophils (at protein level) (PubMed:7683678). Produced by normal alveolar macrophages and granulocytes.

MMP9 / Gelatinase B Antibody (Internal) - Protocols

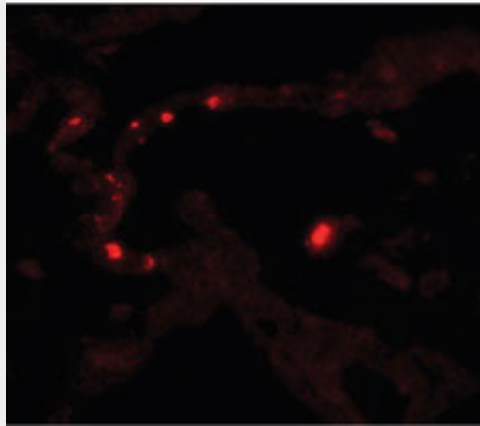
Provided below are standard protocols that you may find useful for product applications.

- [Western Blot](#)
- [Blocking Peptides](#)
- [Dot Blot](#)
- [Immunohistochemistry](#)
- [Immunofluorescence](#)
- [Immunoprecipitation](#)
- [Flow Cytometry](#)
- [Cell Culture](#)

MMP9 / Gelatinase B Antibody (Internal) - Images



Western blot analysis of MMP9 in mouse lung tissue lysate with MMP9 antibody at 1 ug/ml.



Immunofluorescence of MMP9 in human lung tissue with MMP9 antibody at 20 ug/ml.

MMP9 / Gelatinase B Antibody (Internal) - Background

May play an essential role in local proteolysis of the extracellular matrix and in leukocyte migration. Could play a role in bone osteoclastic resorption. Cleaves KISS1 at a Gly-|-Leu bond. Cleaves type IV and type V collagen into large C-terminal three quarter fragments and shorter N-terminal one quarter fragments. Degrades fibronectin but not laminin or Pz-peptide.

MMP9 / Gelatinase B Antibody (Internal) - References

Wilhelm S.M.,et al.J. Biol. Chem. 264:17213-17221(1989).
Huhtala P.,et al.J. Biol. Chem. 266:16485-16490(1991).
Ota T.,et al.Nat. Genet. 36:40-45(2004).
Deloukas P.,et al.Nature 414:865-871(2001).
Sato H.,et al.Oncogene 8:395-405(1993).