

**AGR2 Antibody (N-Terminus)**  
**Rabbit Polyclonal Antibody**  
**Catalog # ALS16012****Specification**

---

**AGR2 Antibody (N-Terminus) - Product Information**

Application	WB, IF, IHC
Primary Accession	<a href="#">O95994</a>
Reactivity	Human, Mouse
Host	Rabbit
Clonality	Polyclonal
Calculated MW	20kDa KDa

**AGR2 Antibody (N-Terminus) - Additional Information**

**Gene ID** 10551

**Other Names**

Anterior gradient protein 2 homolog, AG-2, hAG-2, HPC8, Secreted cement gland protein XAG-2 homolog, AGR2, AG2

**Target/Specificity**

Two isoforms of AGR2 exists as a result of alternative splicing event.

**Reconstitution & Storage**

Long term: -20°C; Short term: +4°C. Avoid repeat freeze-thaw cycles.

**Precautions**

AGR2 Antibody (N-Terminus) is for research use only and not for use in diagnostic or therapeutic procedures.

**AGR2 Antibody (N-Terminus) - Protein Information**

**Name** AGR2

**Synonyms** AG2

**Function**

Required for MUC2 post-transcriptional synthesis and secretion. May play a role in the production of mucus by intestinal cells (By similarity). Proto-oncogene that may play a role in cell migration, cell differentiation and cell growth. Promotes cell adhesion (PubMed:<a href="http://www.uniprot.org/citations/23274113" target="\_blank">23274113</a>).

**Cellular Location**

Secreted. Endoplasmic reticulum {ECO:0000250|UniProtKB:O88312}

**Tissue Location**

Expressed strongly in trachea, lung, stomach, colon, prostate and small intestine. Expressed

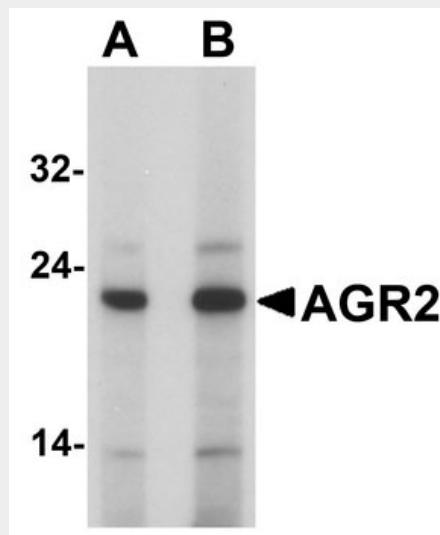
weakly in pituitary gland, salivary gland, mammary gland, bladder, appendix, ovary, fetal lung, uterus, pancreas, kidney, fetal kidney, testis, placenta, thyroid gland and in estrogen receptor (ER)-positive breast cancer cell lines

### AGR2 Antibody (N-Terminus) - Protocols

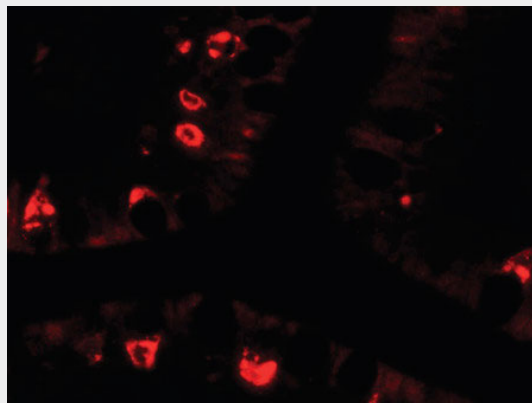
Provided below are standard protocols that you may find useful for product applications.

- [Western Blot](#)
- [Blocking Peptides](#)
- [Dot Blot](#)
- [Immunohistochemistry](#)
- [Immunofluorescence](#)
- [Immunoprecipitation](#)
- [Flow Cytometry](#)
- [Cell Culture](#)

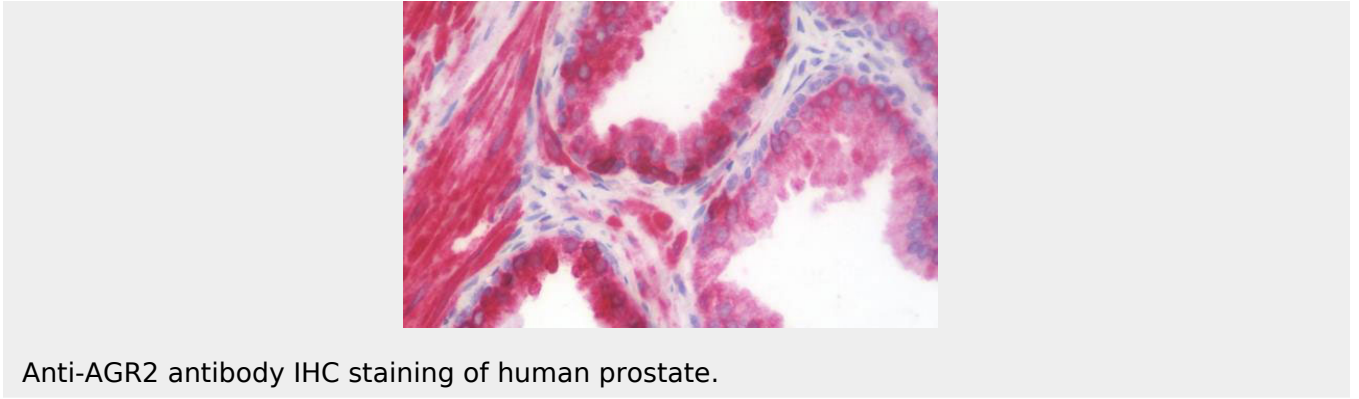
### AGR2 Antibody (N-Terminus) - Images



Western blot analysis of AGR2 in HeLa cell lysate with AGR2 antibody at (A) 1 and (B) 2 ug/ml



Immunofluorescence of AGR2 in human small intestine tissue with AGR2 antibody at 20 ug/ml.



### **AGR2 Antibody (N-Terminus) - Background**

Required for MUC2 post-transcriptional synthesis and secretion. May play a role in the production of mucus by intestinal cells (By similarity). Proto-oncogene that may play a role in cell migration, cell differentiation and cell growth.

### **AGR2 Antibody (N-Terminus) - References**

Thompson D.A.,et al.Biochem. Biophys. Res. Commun. 251:111-116(1998).  
Zhang J.S.,et al.Submitted (DEC-1998) to the EMBL/GenBank/DDBJ databases.  
Fan Y.X.,et al.Submitted (JUL-2003) to the EMBL/GenBank/DDBJ databases.  
Clark H.F.,et al.Genome Res. 13:2265-2270(2003).  
Kalnine N.,et al.Submitted (MAY-2003) to the EMBL/GenBank/DDBJ databases.