

FGF2 / Basic FGF Antibody (clone 3D9)
Mouse Monoclonal Antibody
Catalog # ALS15991**Specification**

FGF2 / Basic FGF Antibody (clone 3D9) - Product Information

Application	IF, IHC, WB
Primary Accession	P09038
Reactivity	Human
Host	Mouse
Clonality	Monoclonal
Calculated MW	31kDa KDa

FGF2 / Basic FGF Antibody (clone 3D9) - Additional Information**Gene ID** 2247**Other Names**

Fibroblast growth factor 2, FGF-2, Basic fibroblast growth factor, bFGF, Heparin-binding growth factor 2, HBGF-2, FGF2, FGFB

Target/Specificity

Human FGF2 / BFGF

Reconstitution & Storage

Store at -20°C. Minimize freezing and thawing.

Precautions

FGF2 / Basic FGF Antibody (clone 3D9) is for research use only and not for use in diagnostic or therapeutic procedures.

FGF2 / Basic FGF Antibody (clone 3D9) - Protein Information**Name** FGF2**Synonyms** FGFB**Function**

Acts as a ligand for FGFR1, FGFR2, FGFR3 and FGFR4 (PubMed:[8663044](http://www.uniprot.org/citations/8663044)). Also acts as an integrin ligand which is required for FGF2 signaling (PubMed:[28302677](http://www.uniprot.org/citations/28302677)). Binds to integrin ITGAV:ITGB3 (PubMed:[28302677](http://www.uniprot.org/citations/28302677)). Plays an important role in the regulation of cell survival, cell division, cell differentiation and cell migration (PubMed:[28302677](http://www.uniprot.org/citations/28302677), PubMed:[8663044](http://www.uniprot.org/citations/8663044)). Functions as a potent mitogen in vitro (PubMed:[1721615](http://www.uniprot.org/citations/1721615))

target="_blank">1721615, PubMed:3732516, PubMed:3964259). Can induce angiogenesis (PubMed:23469107, PubMed:28302677). Mediates phosphorylation of ERK1/2 and thereby promotes retinal lens fiber differentiation (PubMed:29501879).

Cellular Location

Secreted. Nucleus. Note=Exported from cells by an endoplasmic reticulum (ER)/Golgi-independent mechanism. Unconventional secretion of FGF2 occurs by direct translocation across the plasma membrane (PubMed:20230531). Binding of exogenous FGF2 to FGFR facilitates endocytosis followed by translocation of FGF2 across endosomal membrane into the cytosol (PubMed:22321063). Nuclear import from the cytosol requires the classical nuclear import machinery, involving proteins KPNA1 and KPNB1, as well as CEP57 (PubMed:22321063)

Tissue Location

Expressed in granulosa and cumulus cells. Expressed in hepatocellular carcinoma cells, but not in non-cancerous liver tissue.

Volume

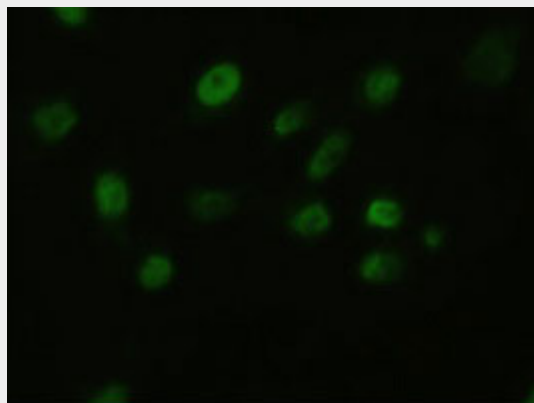
50 µl

FGF2 / Basic FGF Antibody (clone 3D9) - Protocols

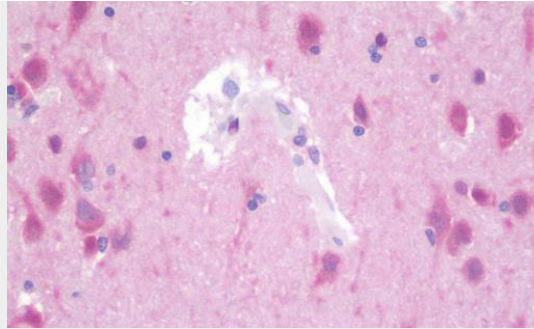
Provided below are standard protocols that you may find useful for product applications.

- [Western Blot](#)
- [Blocking Peptides](#)
- [Dot Blot](#)
- [Immunohistochemistry](#)
- [Immunofluorescence](#)
- [Immunoprecipitation](#)
- [Flow Cytometry](#)
- [Cell Culture](#)

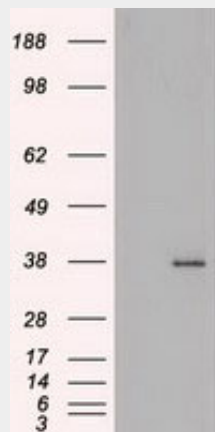
FGF2 / Basic FGF Antibody (clone 3D9) - Images



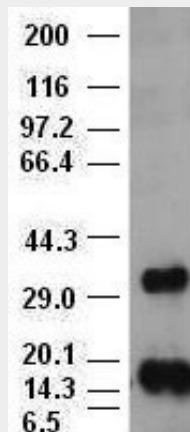
Anti-BFGF mouse monoclonal antibody immunofluorescent staining of COS7 cells transiently...



Anti-FGF2 / Basic FGF antibody IHC staining of human brain, cortex.



HEK293T cells were transfected with the pCMV6-ENTRY control (Left lane) or pCMV6-ENTRY BFGF...



bFGF antibody (3D9) at 1:1000 + Recombinant human bFGF.

FGF2 / Basic FGF Antibody (clone 3D9) - Background

Plays an important role in the regulation of cell survival, cell division, angiogenesis, cell differentiation and cell migration. Functions as potent mitogen in vitro.

FGF2 / Basic FGF Antibody (clone 3D9) - References

Abraham J.A., et al. Cold Spring Harb. Symp. Quant. Biol. 51:657-668(1986).
 Abraham J.A., et al. EMBO J. 5:2523-2528(1986).
 Prats H., et al. Proc. Natl. Acad. Sci. U.S.A. 86:1836-1840(1989).
 Goshima N., et al. Nat. Methods 5:1011-1017(2008).
 Hillier L.W., et al. Nature 434:724-731(2005).

