

**Myelin Basic Protein / MBP Antibody**  
**Chicken Polyclonal Antibody**  
**Catalog # ALS15984****Specification**

---

**Myelin Basic Protein / MBP Antibody - Product Information**

Application	IHC
Primary Accession	<a href="#">P02686</a>
Reactivity	Human, Mouse
Host	Chicken
Clonality	Polyclonal
Calculated MW	33kDa KDa

**Myelin Basic Protein / MBP Antibody - Additional Information****Gene ID** 4155**Other Names**

Myelin basic protein, MBP, Myelin A1 protein, Myelin membrane encephalitogenic protein, MBP

**Target/Specificity**

The peptide corresponded to a region of the MBP gene product shared between the human (NP\_002376, NCBI) and mouse (NP\_034907, NCBI) sequences.

**Reconstitution & Storage**

May be stored at 4°C. For long-term storage, aliquot and store at 4°C. Do not freeze. Aliquots are stable for at least 12 months. Sensitive to light.

**Precautions**

Myelin Basic Protein / MBP Antibody is for research use only and not for use in diagnostic or therapeutic procedures.

**Myelin Basic Protein / MBP Antibody - Protein Information****Name** MBP**Function**

The classic group of MBP isoforms (isoform 4-isoform 14) are with PLP the most abundant protein components of the myelin membrane in the CNS. They have a role in both its formation and stabilization. The smaller isoforms might have an important role in remyelination of denuded axons in multiple sclerosis. The non-classic group of MBP isoforms (isoform 1-isoform 3/Golli-MBPs) may preferentially have a role in the early developing brain long before myelination, maybe as components of transcriptional complexes, and may also be involved in signaling pathways in T-cells and neural cells. Differential splicing events combined with optional post-translational modifications give a wide spectrum of isomers, with each of them potentially having a specialized function. Induces T-cell proliferation.

**Cellular Location**

Myelin membrane; Peripheral membrane protein; Cytoplasmic side. Note=Cytoplasmic side of myelin

#### **Tissue Location**

MBP isoforms are found in both the central and the peripheral nervous system, whereas Golli-MBP isoforms are expressed in fetal thymus, spleen and spinal cord, as well as in cell lines derived from the immune system.

#### **Volume**

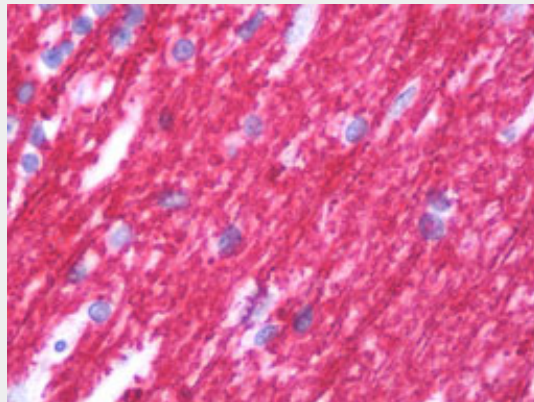
50 µl

### **Myelin Basic Protein / MBP Antibody - Protocols**

Provided below are standard protocols that you may find useful for product applications.

- [Western Blot](#)
- [Blocking Peptides](#)
- [Dot Blot](#)
- [Immunohistochemistry](#)
- [Immunofluorescence](#)
- [Immunoprecipitation](#)
- [Flow Cytometry](#)
- [Cell Culture](#)

### **Myelin Basic Protein / MBP Antibody - Images**



Anti-Myelin Basic Protein / MBP antibody IHC staining of human brain, cerebellum.

### **Myelin Basic Protein / MBP Antibody - Background**

The classic group of MBP isoforms (isoform 4-isoform 14) are with PLP the most abundant protein components of the myelin membrane in the CNS. They have a role in both its formation and stabilization. The smaller isoforms might have an important role in remyelination of denuded axons in multiple sclerosis. The non- classic group of MBP isoforms (isoform 1-isoform 3/Golli-MBPs) may preferentially have a role in the early developing brain long before myelination, maybe as components of transcriptional complexes, and may also be involved in signaling pathways in T-cells and neural cells. Differential splicing events combined with optional post-translational modifications give a wide spectrum of isomers, with each of them potentially having a specialized function. Induces T-cell proliferation.

### **Myelin Basic Protein / MBP Antibody - References**

Carnegie P.R., et al. *Biochem. J.* 123:57-67(1971).  
Roth H.J., et al. *J. Neurosci. Res.* 16:227-238(1986).  
Kamholz J., et al. *Proc. Natl. Acad. Sci. U.S.A.* 83:4962-4966(1986).  
Roth H.J., et al. *J. Neurosci. Res.* 17:321-328(1987).  
Streicher R., et al. *Biol. Chem. Hoppe-Seyler* 370:503-510(1989).