

KRT14 / CK14 / Cytokeratin 14 Antibody (C-Terminus, clone LL002)
Mouse Monoclonal Antibody
Catalog # ALS15974**Specification**

KRT14 / CK14 / Cytokeratin 14 Antibody (C-Terminus, clone LL002) - Product Information

Application	IHC
Primary Accession	P02533
Reactivity	Human, Pig, Dog
Host	Mouse
Clonality	Monoclonal
Calculated MW	52kDa KDa

KRT14 / CK14 / Cytokeratin 14 Antibody (C-Terminus, clone LL002) - Additional Information**Gene ID** 3861**Other Names**

Keratin, type I cytoskeletal 14, Cytokeratin-14, CK-14, Keratin-14, K14, KRT14

Target/Specificity

Recognizes cytokeratin 14, a type I intermediate filament, expressed by stratifying epithelial cells and can be used to distinguish these cell types from simple epithelial cells, which do not express cytokeratin 14

Reconstitution & Storage

Long term: -20°C; Short term: +4°C. Avoid repeat freeze-thaw cycles.

Precautions

KRT14 / CK14 / Cytokeratin 14 Antibody (C-Terminus, clone LL002) is for research use only and not for use in diagnostic or therapeutic procedures.

KRT14 / CK14 / Cytokeratin 14 Antibody (C-Terminus, clone LL002) - Protein Information**Name** KRT14**Function**

The nonhelical tail domain is involved in promoting KRT5- KRT14 filaments to self-organize into large bundles and enhances the mechanical properties involved in resilience of keratin intermediate filaments in vitro.

Cellular Location

Cytoplasm. Nucleus. Note=Expressed in both as a filamentous pattern.

Tissue Location

Expressed in the corneal epithelium (at protein level) (PubMed:26758872). Detected in the basal layer, lowered within the more apically located layers specifically in the stratum spinosum, stratum

granulosum but is not detected in stratum corneum. Strongly expressed in the outer root sheath of anagen follicles but not in the germinative matrix, inner root sheath or hair (PubMed:9457912). Found in keratinocytes surrounding the club hair during telogen (PubMed:9457912).

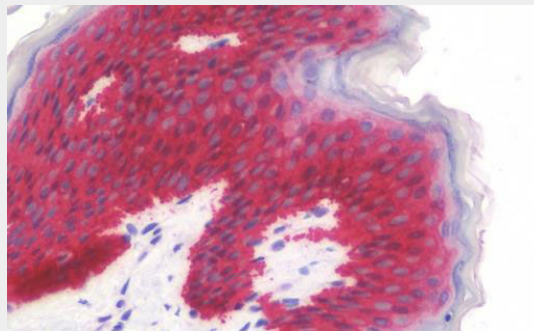
Volume
50 µl

KRT14 / CK14 / Cytokeratin 14 Antibody (C-Terminus, clone LL002) - Protocols

Provided below are standard protocols that you may find useful for product applications.

- [Western Blot](#)
- [Blocking Peptides](#)
- [Dot Blot](#)
- [Immunohistochemistry](#)
- [Immunofluorescence](#)
- [Immunoprecipitation](#)
- [Flow Cytometry](#)
- [Cell Culture](#)

KRT14 / CK14 / Cytokeratin 14 Antibody (C-Terminus, clone LL002) - Images



Anti-KRT14 / CK14 / Cytokeratin 14 antibody IHC staining of human skin.

KRT14 / CK14 / Cytokeratin 14 Antibody (C-Terminus, clone LL002) - Background

The nonhelical tail domain is involved in promoting KRT5-KRT14 filaments to self-organize into large bundles and enhances the mechanical properties involved in resilience of keratin intermediate filaments in vitro.

KRT14 / CK14 / Cytokeratin 14 Antibody (C-Terminus, clone LL002) - References

- Marchuk D., et al. Cell 39:491-498(1984).
Marchuk D., et al. Proc. Natl. Acad. Sci. U.S.A. 82:1609-1613(1985).
Kalnina N., et al. Submitted (MAY-2003) to the EMBL/GenBank/DDBJ databases.
Zody M.C., et al. Nature 440:1045-1049(2006).
Hanukoglu I., et al. Cell 31:243-252(1982).