

RPS6KC1 Antibody (aa231-280)
Rabbit Polyclonal Antibody
Catalog # ALS15973**Specification**

RPS6KC1 Antibody (aa231-280) - Product Information

Application	IF
Primary Accession	O96S38
Reactivity	Human, Mouse
Host	Rabbit
Clonality	Polyclonal
Calculated MW	119kDa KDa

RPS6KC1 Antibody (aa231-280) - Additional Information**Gene ID** 26750**Other Names**

Ribosomal protein S6 kinase delta-1, S6K-delta-1, 2.7.11.1, 52 kDa ribosomal protein S6 kinase, Ribosomal S6 kinase-like protein with two PSK domains 118 kDa protein, SPHK1-binding protein, RPS6KC1, RPK118

Target/Specificity

RPS6KC1 Antibody detects endogenous levels of total RPS6KC1 protein.

Reconstitution & Storage

Store at -20°C for up to one year.

Precautions

RPS6KC1 Antibody (aa231-280) is for research use only and not for use in diagnostic or therapeutic procedures.

RPS6KC1 Antibody (aa231-280) - Protein Information**Name** RPS6KC1**Synonyms** RPK118**Function**

May be involved in transmitting sphingosine-1 phosphate (SPP)-mediated signaling into the cell (PubMed:12077123). Plays a role in the recruitment of PRDX3 to early endosomes (PubMed:15750338).

Cellular Location

Cytoplasm. Membrane Early endosome

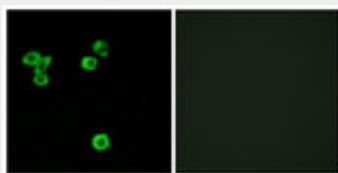
Tissue Location

Highly expressed in testis, skeletal muscle, brain, heart, placenta, kidney and liver and weakly expressed in thymus, small intestine, lung and colon.

Volume50 μ l**RPS6KC1 Antibody (aa231-280) - Protocols**

Provided below are standard protocols that you may find useful for product applications.

- [Western Blot](#)
- [Blocking Peptides](#)
- [Dot Blot](#)
- [Immunohistochemistry](#)
- [Immunofluorescence](#)
- [Immunoprecipitation](#)
- [Flow Cytometry](#)
- [Cell Culture](#)

RPS6KC1 Antibody (aa231-280) - Images

Immunofluorescence of LOVO cells, using RPS6KC1 Antibody.

RPS6KC1 Antibody (aa231-280) - Background

May be involved in transmitting sphingosine-1 phosphate (SPP)-mediated signaling into the cell.

RPS6KC1 Antibody (aa231-280) - References

- Hayashi S., et al. J. Biol. Chem. 277:33319-33324(2002).
Guo J.H., et al. Submitted (JAN-2002) to the EMBL/GenBank/DDBJ databases.
Ota T., et al. Nat. Genet. 36:40-45(2004).
Gregory S.G., et al. Nature 441:315-321(2006).
Mural R.J., et al. Submitted (SEP-2005) to the EMBL/GenBank/DDBJ databases.