

RALDH2 / ALDH1A2 Antibody (aa412-461)
Rabbit Polyclonal Antibody
Catalog # ALS15944**Specification**

RALDH2 / ALDH1A2 Antibody (aa412-461) - Product Information

Application	IHC, WB
Primary Accession	O94788
Reactivity	Human, Mouse, Rat
Host	Rabbit
Clonality	Polyclonal
Calculated MW	57kDa KDa

RALDH2 / ALDH1A2 Antibody (aa412-461) - Additional Information**Gene ID** 8854**Other Names**

Retinal dehydrogenase 2, RALDH 2, RaIDH2, 1.2.1.36, Aldehyde dehydrogenase family 1 member A2, Retinaldehyde-specific dehydrogenase type 2, RALDH(II), ALDH1A2, RALDH2

Target/Specificity

ALDH1A2 Antibody detects endogenous levels of total ALDH1A2 protein.

Reconstitution & Storage

Store at -20°C for up to one year.

Precautions

RALDH2 / ALDH1A2 Antibody (aa412-461) is for research use only and not for use in diagnostic or therapeutic procedures.

RALDH2 / ALDH1A2 Antibody (aa412-461) - Protein Information**Name** ALDH1A2**Synonyms** RALDH2**Function**

Catalyzes the NAD-dependent oxidation of aldehyde substrates, such as all-trans-retinal and all-trans-13,14-dihydroretinal, to their corresponding carboxylic acids, all-trans-retinoate and all-trans-13,14-dihydroretinoate, respectively (PubMed: [29240402](http://www.uniprot.org/citations/29240402), PubMed: [33565183](http://www.uniprot.org/citations/33565183)). Retinoate signaling is critical for the transcriptional control of many genes, for instance it is crucial for initiation of meiosis in both male and female (Probable) (PubMed: [33565183](http://www.uniprot.org/citations/33565183)). Recognizes retinal as substrate, both in its free form and when bound to cellular retinol-binding protein (By similarity). Can metabolize octanal and decanal, but has only very low activity with benzaldehyde,

acetaldehyde and propanal (By similarity). Displays complete lack of activity with citral (By similarity).

Cellular Location

Cytoplasm.

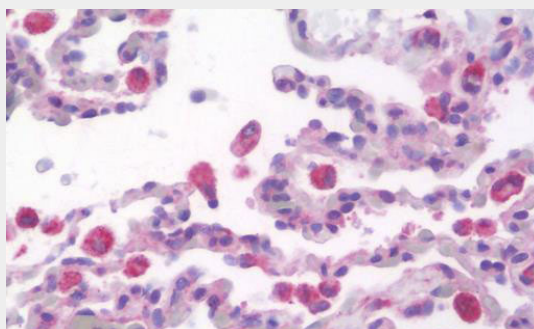
Volume

50 μ l

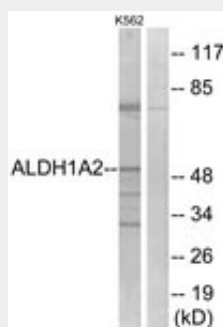
RALDH2 / ALDH1A2 Antibody (aa412-461) - Protocols

Provided below are standard protocols that you may find useful for product applications.

- [Western Blot](#)
- [Blocking Peptides](#)
- [Dot Blot](#)
- [Immunohistochemistry](#)
- [Immunofluorescence](#)
- [Immunoprecipitation](#)
- [Flow Cytometry](#)
- [Cell Culture](#)

RALDH2 / ALDH1A2 Antibody (aa412-461) - Images

Anti-RALDH2 / ALDH1A2 antibody IHC staining of human lung.



Western blot of extracts from K562 cells, using ALDH1A2 Antibody.

RALDH2 / ALDH1A2 Antibody (aa412-461) - Background

Recognizes as substrates free retinal and cellular retinol-binding protein-bound retinal. Does metabolize octanal and decanal but does not metabolize citral, benzaldehyde, acetaldehyde and propanal efficiently (By similarity).

RALDH2 / ALDH1A2 Antibody (aa412-461) - References

- Ono Y.,et al.Mol. Cell. Biol. 18:6939-6950(1998).
Ota T.,et al.Nat. Genet. 36:40-45(2004).
Zody M.C.,et al.Nature 440:671-675(2006).
Bechtel S.,et al.BMC Genomics 8:399-399(2007).
Burkard T.R.,et al.BMC Syst. Biol. 5:17-17(2011).