

**NT5C1A / CN1A Antibody (aa151-200)**  
**Rabbit Polyclonal Antibody**  
**Catalog # ALS15911****Specification**

---

**NT5C1A / CN1A Antibody (aa151-200) - Product Information**

Application	IHC, IF, WB
Primary Accession	<a href="#">O9BXI3</a>
Reactivity	Human, Mouse
Host	Rabbit
Clonality	Polyclonal
Calculated MW	41kDa KDa

**NT5C1A / CN1A Antibody (aa151-200) - Additional Information****Gene ID** 84618**Other Names**

Cytosolic 5'-nucleotidase 1A, cN1A, 3.1.3.5, Cytosolic 5'-nucleotidase IA, cN-I, cN-IA, NT5C1A

**Target/Specificity**

NT5C1A Antibody detects endogenous levels of total NT5C1A protein.

**Reconstitution & Storage**

Store at -20°C for up to one year.

**Precautions**

NT5C1A / CN1A Antibody (aa151-200) is for research use only and not for use in diagnostic or therapeutic procedures.

**NT5C1A / CN1A Antibody (aa151-200) - Protein Information****Name** NT5C1A**Function**

Catalyzes the hydrolysis of ribonucleotide and deoxyribonucleotide monophosphates, releasing inorganic phosphate and the corresponding nucleoside (PubMed: [11133996](http://www.uniprot.org/citations/11133996), PubMed: [34814800](http://www.uniprot.org/citations/34814800), PubMed: [7599155](http://www.uniprot.org/citations/7599155), PubMed: [8967393](http://www.uniprot.org/citations/8967393)). AMP is the major substrate but can also hydrolyze dCMP and IMP (PubMed: [11133996](http://www.uniprot.org/citations/11133996), PubMed: [34814800](http://www.uniprot.org/citations/34814800), PubMed: [7599155](http://www.uniprot.org/citations/7599155), PubMed: [8967393](http://www.uniprot.org/citations/8967393)).

**Cellular Location**

Cytoplasm.

**Tissue Location**

Highly expressed in skeletal muscle. Detected at intermediate levels in heart, brain, kidney and pancreas

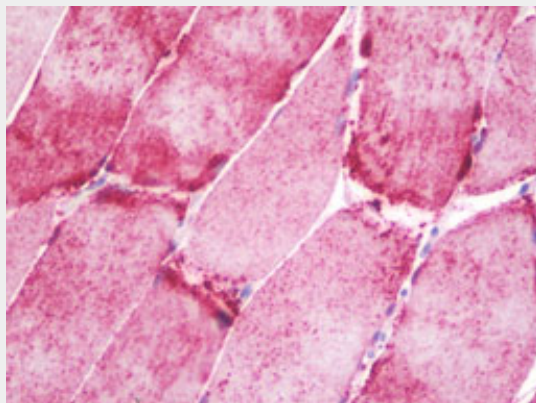
**Volume**

50  $\mu$ l

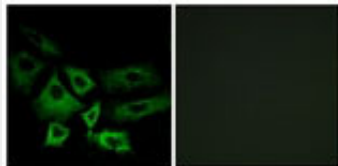
**NT5C1A / CN1A Antibody (aa151-200) - Protocols**

Provided below are standard protocols that you may find useful for product applications.

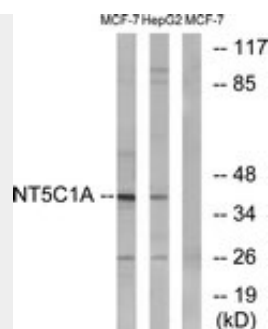
- [Western Blot](#)
- [Blocking Peptides](#)
- [Dot Blot](#)
- [Immunohistochemistry](#)
- [Immunofluorescence](#)
- [Immunoprecipitation](#)
- [Flow Cytometry](#)
- [Cell Culture](#)

**NT5C1A / CN1A Antibody (aa151-200) - Images**

Anti-NT5C1A / CN1A antibody IHC staining of human skeletal muscle.



Immunofluorescence of A549 cells, using NT5C1A Antibody.



Western blot of extracts from MCF-7/HepG2 cells, using NT5C1A Antibody.

#### **NT5C1A / CN1A Antibody (aa151-200) - Background**

Dephosphorylates the 5' and 2'(3')-phosphates of deoxyribonucleotides and has a broad substrate specificity. Helps to regulate adenosine levels in heart during ischemia and hypoxia.

#### **NT5C1A / CN1A Antibody (aa151-200) - References**

Hunsucker S.A., et al. *J. Biol. Chem.* 276:10498-10504(2001).  
Lowenstein J.M., et al. Submitted (MAR-2001) to the EMBL/GenBank/DDBJ databases.  
Gregory S.G., et al. *Nature* 441:315-321(2006).