

RPL18 Antibody (aa111-160)
Rabbit Polyclonal Antibody
Catalog # ALS15908**Specification**

RPL18 Antibody (aa111-160) - Product Information

Application	IHC, WB
Primary Accession	Q07020
Reactivity	Human, Mouse, Rat
Host	Rabbit
Clonality	Polyclonal
Calculated MW	22kDa KDa

RPL18 Antibody (aa111-160) - Additional Information**Gene ID** 6141**Other Names**

60S ribosomal protein L18, RPL18

Target/Specificity

RPL18 Antibody detects endogenous levels of total RPL18 protein.

Reconstitution & Storage

Store at -20°C for up to one year.

Precautions

RPL18 Antibody (aa111-160) is for research use only and not for use in diagnostic or therapeutic procedures.

RPL18 Antibody (aa111-160) - Protein Information**Name** RPL18**Function**

Component of the large ribosomal subunit (PubMed: [12962325](http://www.uniprot.org/citations/12962325), PubMed: [23636399](http://www.uniprot.org/citations/23636399), PubMed: [25901680](http://www.uniprot.org/citations/25901680), PubMed: [25957688](http://www.uniprot.org/citations/25957688), PubMed: [32669547](http://www.uniprot.org/citations/32669547)). The ribosome is a large ribonucleoprotein complex responsible for the synthesis of proteins in the cell (PubMed: [12962325](http://www.uniprot.org/citations/12962325), PubMed: [23636399](http://www.uniprot.org/citations/23636399), PubMed: [25901680](http://www.uniprot.org/citations/25901680), PubMed: [25957688](http://www.uniprot.org/citations/25957688), PubMed: [32669547](http://www.uniprot.org/citations/32669547)).

Cellular Location

Cytoplasm, cytosol. Cytoplasm Rough endoplasmic reticulum {ECO:0000250|UniProtKB:Q95342}
Note=Detected on cytosolic polysomes (PubMed:25957688). Detected in ribosomes that are associated with the rough endoplasmic reticulum (By similarity).
{ECO:0000250|UniProtKB:Q95342, ECO:0000269|PubMed:25957688}

Volume

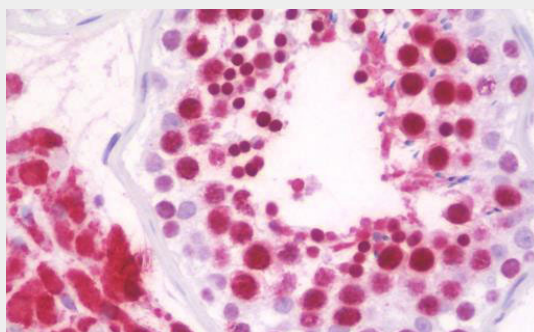
50 μ l

RPL18 Antibody (aa111-160) - Protocols

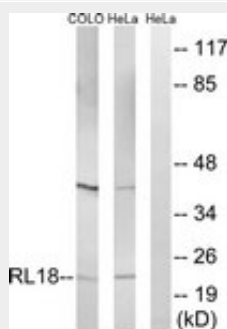
Provided below are standard protocols that you may find useful for product applications.

- [Western Blot](#)
- [Blocking Peptides](#)
- [Dot Blot](#)
- [Immunohistochemistry](#)
- [Immunofluorescence](#)
- [Immunoprecipitation](#)
- [Flow Cytometry](#)
- [Cell Culture](#)

RPL18 Antibody (aa111-160) - Images



Anti-RPL18 antibody IHC staining of human testis.



Western blot of extracts from HeLa/COLO cells, using RPL18 Antibody.

RPL18 Antibody (aa111-160) - References

Puder M., et al. *Biochim. Biophys. Acta* 1216:134-136(1993).
Yoshihama M., et al. *Genome Res.* 12:379-390(2002).
Grimwood J., et al. *Nature* 428:529-535(2004).

Odintsova T.I., et al. J. Protein Chem. 22:249-258(2003).
Beausoleil S.A., et al. Nat. Biotechnol. 24:1285-1292(2006).