

**ALDH5A1 Antibody (aa485-496)**  
**Goat Polyclonal Antibody**  
**Catalog # ALS15855**

**Specification**

---

**ALDH5A1 Antibody (aa485-496) - Product Information**

Application	<b>IHC, WB</b>
Primary Accession	<a href="#">P51649</a>
Reactivity	<b>Human, Mouse, Rat, Rabbit, Hamster, Monkey, Chicken, Horse, Xenopus, Bovine, Dog</b>
Host	<b>Goat</b>
Clonality	<b>Polyclonal</b>
Calculated MW	<b>57kDa KDa</b>

**ALDH5A1 Antibody (aa485-496) - Additional Information**

**Gene ID** 7915

**Other Names**

Succinate-semialdehyde dehydrogenase, mitochondrial, 1.2.1.24, Aldehyde dehydrogenase family 5 member A1, NAD(+)-dependent succinic semialdehyde dehydrogenase, ALDH5A1, SSADH

**Target/Specificity**

Human ALDH5A1. This antibody is expected to recognize both reported isoforms (NP\_733936.1; NP\_001071.1). Amino acid numbering in name calculated from NP\_733936.1.

**Reconstitution & Storage**

Store at -20°C. Minimize freezing and thawing.

**Precautions**

ALDH5A1 Antibody (aa485-496) is for research use only and not for use in diagnostic or therapeutic procedures.

**ALDH5A1 Antibody (aa485-496) - Protein Information**

**Name** ALDH5A1 ([HGNC:408](#))

**Synonyms** SSADH

**Function**

Catalyzes one step in the degradation of the inhibitory neurotransmitter gamma-aminobutyric acid (GABA).

**Cellular Location**

Mitochondrion.

**Tissue Location**

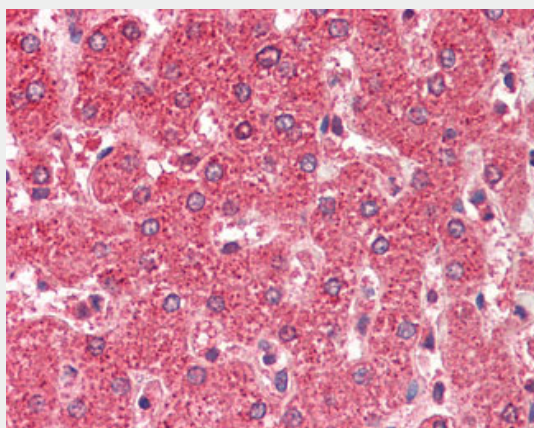
Brain, pancreas, heart, liver, skeletal muscle and kidney. Lower in placenta

### ALDH5A1 Antibody (aa485-496) - Protocols

Provided below are standard protocols that you may find useful for product applications.

- [Western Blot](#)
- [Blocking Peptides](#)
- [Dot Blot](#)
- [Immunohistochemistry](#)
- [Immunofluorescence](#)
- [Immunoprecipitation](#)
- [Flow Cytometry](#)
- [Cell Culture](#)

### ALDH5A1 Antibody (aa485-496) - Images



Anti-ALDH5A1 antibody IHC staining of human liver.



ALDH5A1 antibody (0.5 ug/ml) staining of Human Liver lysate (35 ug protein/ml in RIPA buffer).

### ALDH5A1 Antibody (aa485-496) - Background

Catalyzes one step in the degradation of the inhibitory neurotransmitter gamma-aminobutyric acid (GABA).

### ALDH5A1 Antibody (aa485-496) - References

Chambliss K.L.,et al.Am. J. Hum. Genet. 63:399-408(1998).  
Blasi P.,et al.Mol. Genet. Metab. 76:348-362(2002).  
Ota T.,et al.Nat. Genet. 36:40-45(2004).  
Mungall A.J.,et al.Nature 425:805-811(2003).  
Mural R.J.,et al.Submitted (JUL-2005) to the EMBL/GenBank/DDBJ databases.