

LGALS3 / Galectin 3 Antibody (Internal)
Goat Polyclonal Antibody
Catalog # ALS15835**Specification**

LGALS3 / Galectin 3 Antibody (Internal) - Product Information

Application	WB
Primary Accession	P17931
Reactivity	Human, Mouse
Host	Goat
Clonality	Polyclonal
Calculated MW	26kDa KDa

LGALS3 / Galectin 3 Antibody (Internal) - Additional Information**Gene ID** 3958**Other Names**

Galectin-3, Gal-3, 35 kDa lectin, Carbohydrate-binding protein 35, CBP 35, Galactose-specific lectin 3, Galactoside-binding protein, GALBP, IgE-binding protein, L-31, Laminin-binding protein, Lectin L-29, Mac-2 antigen, LGALS3, MAC2

Target/Specificity

Mouse LGALS3 / Galectin-3. Reported variants represent identical protein: NP_001139425.1, NP_034835.1

Reconstitution & Storage

Store at -20°C. Minimize freezing and thawing.

Precautions

LGALS3 / Galectin 3 Antibody (Internal) is for research use only and not for use in diagnostic or therapeutic procedures.

LGALS3 / Galectin 3 Antibody (Internal) - Protein Information**Name** LGALS3 ([HGNC:6563](#))**Synonyms** MAC2**Function**

Galactose-specific lectin which binds IgE. May mediate with the alpha-3, beta-1 integrin the stimulation by CSPG4 of endothelial cells migration. Together with DMBT1, required for terminal differentiation of columnar epithelial cells during early embryogenesis (By similarity). In the nucleus: acts as a pre-mRNA splicing factor. Involved in acute inflammatory responses including neutrophil activation and adhesion, chemoattraction of monocytes macrophages, opsonization of apoptotic neutrophils, and activation of mast cells. Together with TRIM16, coordinates the recognition of membrane damage with mobilization of the core autophagy regulators ATG16L1 and BECN1 in response to damaged endomembranes.

Cellular Location

Cytoplasm. Nucleus. Secreted. Note=Secreted by a non- classical secretory pathway and associates with the cell surface. Can be secreted; the secretion is dependent on protein unfolding and facilitated by the cargo receptor TMED10; it results in protein translocation from the cytoplasm into the ERGIC (endoplasmic reticulum- Golgi intermediate compartment) followed by vesicle entry and secretion (PubMed:32272059).

Tissue Location

A major expression is found in the colonic epithelium. It is also abundant in the activated macrophages. Expressed in fetal membranes.

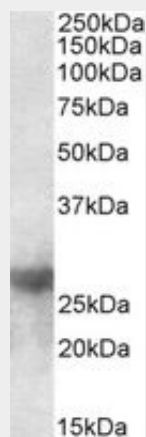
Volume

50 μ l

LGALS3 / Galectin 3 Antibody (Internal) - Protocols

Provided below are standard protocols that you may find useful for product applications.

- [Western Blot](#)
- [Blocking Peptides](#)
- [Dot Blot](#)
- [Immunohistochemistry](#)
- [Immunofluorescence](#)
- [Immunoprecipitation](#)
- [Flow Cytometry](#)
- [Cell Culture](#)

LGALS3 / Galectin 3 Antibody (Internal) - Images

LGALS3 antibody (0.5 ug/ml) staining of Mouse Heart lysate (35 ug protein/ml in RIPA buffer).

LGALS3 / Galectin 3 Antibody (Internal) - Background

Galactose-specific lectin which binds IgE. May mediate with the alpha-3, beta-1 integrin the stimulation by CSPG4 of endothelial cells migration. Together with DMBT1, required for terminal differentiation of columnar epithelial cells during early embryogenesis (By similarity). In the nucleus: acts as a pre-mRNA splicing factor. Involved in acute inflammatory responses including neutrophil activation and adhesion, chemoattraction of monocytes macrophages, opsonization of apoptotic neutrophils, and activation of mast cells.

LGALS3 / Galectin 3 Antibody (Internal) - References

Robertson M.W.,et al.Biochemistry 29:8093-8100(1990).
Cherayil B.,et al.Proc. Natl. Acad. Sci. U.S.A. 87:7324-7328(1990).
Oda Y.,et al.Gene 99:279-283(1991).
Raz A.,et al.Cancer Res. 51:2173-2178(1991).
Lotz M.M.,et al.Proc. Natl. Acad. Sci. U.S.A. 90:3466-3470(1993).