

CD20 Antibody (clone 4B4)
Mouse Monoclonal Antibody
Catalog # ALS15830

Specification

CD20 Antibody (clone 4B4) - Product Information

Application	WB, IHC
Primary Accession	P11836
Reactivity	Human
Host	Mouse
Clonality	Monoclonal
Calculated MW	33kDa KDa

CD20 Antibody (clone 4B4) - Additional Information

Gene ID 931

Other Names

B-lymphocyte antigen CD20, B-lymphocyte surface antigen B1, Bp35, Leukocyte surface antigen Leu-16, Membrane-spanning 4-domains subfamily A member 1, CD20, MS4A1, CD20

Target/Specificity

Human CD20

Reconstitution & Storage

Store at -20°C. Minimize freezing and thawing.

Precautions

CD20 Antibody (clone 4B4) is for research use only and not for use in diagnostic or therapeutic procedures.

CD20 Antibody (clone 4B4) - Protein Information

Name MS4A1

Synonyms CD20

Function

B-lymphocyte-specific membrane protein that plays a role in the regulation of cellular calcium influx necessary for the development, differentiation, and activation of B-lymphocytes (PubMed: [12920111](http://www.uniprot.org/citations/12920111), PubMed: [3925015](http://www.uniprot.org/citations/3925015), PubMed: [7684739](http://www.uniprot.org/citations/7684739)). Functions as a store-operated calcium (SOC) channel component promoting calcium influx after activation by the B-cell receptor/BCR (PubMed: [12920111](http://www.uniprot.org/citations/12920111), PubMed: [18474602](http://www.uniprot.org/citations/18474602), PubMed: [7684739](http://www.uniprot.org/citations/7684739)).

Cellular Location

Cell membrane; Multi-pass membrane protein. Cell membrane; Lipid-anchor. Note=Constitutively associated with membrane rafts.

Tissue Location

Expressed on B-cells.

Volume

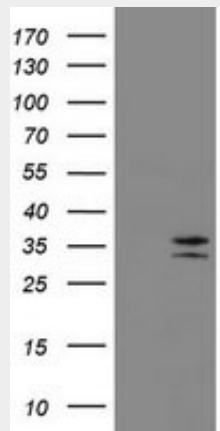
50 μ l

CD20 Antibody (clone 4B4) - Protocols

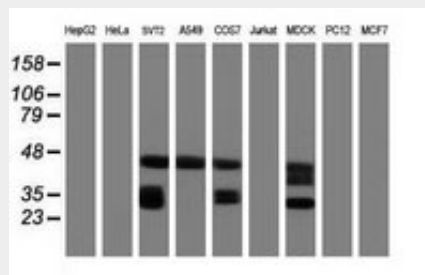
Provided below are standard protocols that you may find useful for product applications.

- [Western Blot](#)
- [Blocking Peptides](#)
- [Dot Blot](#)
- [Immunohistochemistry](#)
- [Immunofluorescence](#)
- [Immunoprecipitation](#)
- [Flow Cytometry](#)
- [Cell Culture](#)

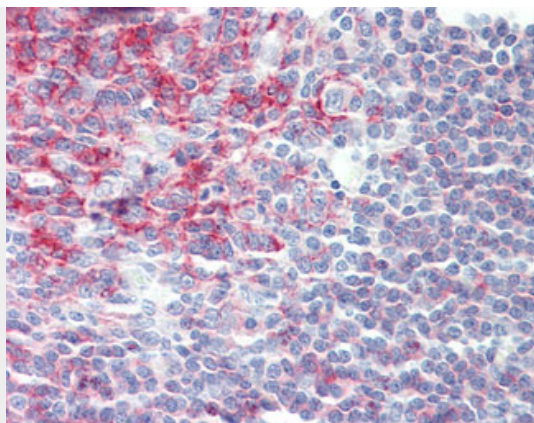
CD20 Antibody (clone 4B4) - Images



HEK293T cells were transfected with the pCMV6-ENTRY control (Left lane) or pCMV6-ENTRY MS4A1...



Western blot of extracts (35 ug) from 9 different cell lines by using anti-MS4A1 monoclonal...



Anti-CD20 antibody IHC staining of human tonsil.

CD20 Antibody (clone 4B4) - Background

This protein may be involved in the regulation of B-cell activation and proliferation.

CD20 Antibody (clone 4B4) - References

- Stamenkovic I., et al. *J. Exp. Med.* 167:1975-1980(1988).
- Tedder T.F., et al. *Proc. Natl. Acad. Sci. U.S.A.* 85:208-212(1988).
- Einfeld D.A., et al. *EMBO J.* 7:711-717(1988).
- Tedder T.F., et al. *J. Immunol.* 142:2560-2568(1989).
- Ota T., et al. *Nat. Genet.* 36:40-45(2004).