

ORC3L / ORC3 Antibody (C-Terminus)
Goat Polyclonal Antibody
Catalog # ALS15770**Specification**

ORC3L / ORC3 Antibody (C-Terminus) - Product Information

Application	IHC, WB
Primary Accession	O9UBD5
Reactivity	Human, Mouse, Rat, Rabbit, Zebrafish, Hamster, Monkey, Pig, Chicken, Horse, Xenopus, Bovine, Dog
Host	Goat
Clonality	Polyclonal
Calculated MW	82kDa KDa

ORC3L / ORC3 Antibody (C-Terminus) - Additional Information**Gene ID** 23595**Other Names**

Origin recognition complex subunit 3, Origin recognition complex subunit Latheo, ORC3, LATHEO, ORC3L

Target/Specificity

Human ORC3 / ORC3L. This antibody is expected to recognize both reported isoforms (NP_862820.1 and NP_036513.2).

Reconstitution & Storage

Store at -20°C. Minimize freezing and thawing.

Precautions

ORC3L / ORC3 Antibody (C-Terminus) is for research use only and not for use in diagnostic or therapeutic procedures.

ORC3L / ORC3 Antibody (C-Terminus) - Protein Information**Name** ORC3**Synonyms** LATHEO, ORC3L**Function**

Component of the origin recognition complex (ORC) that binds origins of replication. DNA-binding is ATP-dependent. The specific DNA sequences that define origins of replication have not been identified yet. ORC is required to assemble the pre-replication complex necessary to initiate DNA replication. Binds histone H3 and H4 trimethylation marks H3K9me3, H3K27me3 and H4K20me3.

Cellular Location

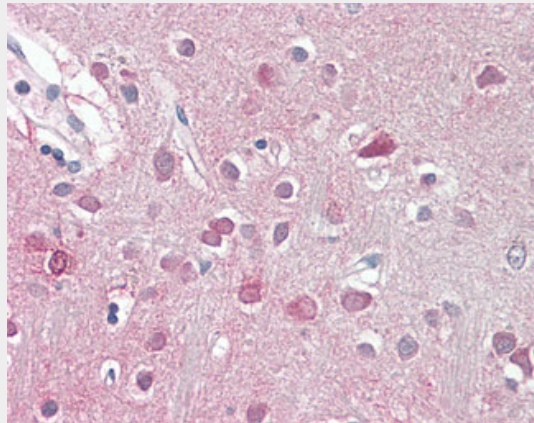
Nucleus. Chromosome

ORC3L / ORC3 Antibody (C-Terminus) - Protocols

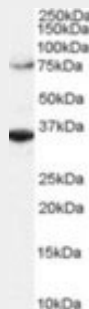
Provided below are standard protocols that you may find useful for product applications.

- [Western Blot](#)
- [Blocking Peptides](#)
- [Dot Blot](#)
- [Immunohistochemistry](#)
- [Immunofluorescence](#)
- [Immunoprecipitation](#)
- [Flow Cytometry](#)
- [Cell Culture](#)

ORC3L / ORC3 Antibody (C-Terminus) - Images



Human Brain, Cortex



Antibody (2 ug/ml) staining of HeLa lysate (RIPA buffer, 1.4E5 cells per lane).

ORC3L / ORC3 Antibody (C-Terminus) - Background

Component of the origin recognition complex (ORC) that binds origins of replication. DNA-binding is ATP-dependent. The specific DNA sequences that define origins of replication have not been identified yet. ORC is required to assemble the pre-replication complex necessary to initiate DNA replication. Binds histone H3 and H4 trimethylation marks H3K9me3, H3K27me3 and H4K20me3.

ORC3L / ORC3 Antibody (C-Terminus) - References

Tugal T., et al. Submitted (MAR-1999) to the EMBL/GenBank/DDBJ databases.
Dean F.B., et al. Submitted (FEB-1999) to the EMBL/GenBank/DDBJ databases.
Pinto S., et al. Neuron 23:45-54(1999).

Wiemann S.,et al.Genome Res. 11:422-435(2001).

Suzuki Y.,et al.Submitted (APR-2005) to the EMBL/GenBank/DDBJ databases.