

Insulin Antibody (clone E2E3)
Mouse Monoclonal Antibody
Catalog # ALS15742**Specification**

Insulin Antibody (clone E2E3) - Product Information

Application	IHC
Primary Accession	P01308
Reactivity	Human, Rabbit, Pig, Bovine
Host	Mouse
Clonality	Monoclonal
Calculated MW	12kDa KDa

Insulin Antibody (clone E2E3) - Additional Information**Gene ID** 3630**Other Names**

Insulin, Insulin B chain, Insulin A chain, INS

Target/Specificity

Recognizes insulin, a major metabolic hormone produced by B cells of the pancreas

Reconstitution & Storage

Short term 4°C, long term aliquot and store at -20°C, avoid freeze thaw cycles. Store undiluted.

Precautions

Insulin Antibody (clone E2E3) is for research use only and not for use in diagnostic or therapeutic procedures.

Insulin Antibody (clone E2E3) - Protein Information**Name** INS**Function**

Insulin decreases blood glucose concentration. It increases cell permeability to monosaccharides, amino acids and fatty acids. It accelerates glycolysis, the pentose phosphate cycle, and glycogen synthesis in liver.

Cellular Location

Secreted.

Volume

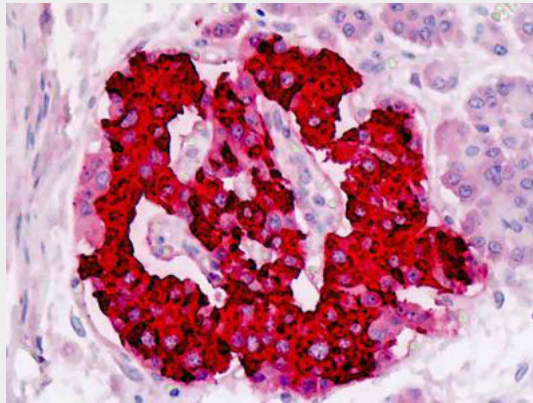
50 µl

Insulin Antibody (clone E2E3) - Protocols

Provided below are standard protocols that you may find useful for product applications.

- [Western Blot](#)
- [Blocking Peptides](#)
- [Dot Blot](#)
- [Immunohistochemistry](#)
- [Immunofluorescence](#)
- [Immunoprecipitation](#)
- [Flow Cytometry](#)
- [Cell Culture](#)

Insulin Antibody (clone E2E3) - Images



Human Insulin: Formalin-Fixed, Paraffin-Embedded (FFPE)

Insulin Antibody (clone E2E3) - Background

Insulin decreases blood glucose concentration. It increases cell permeability to monosaccharides, amino acids and fatty acids. It accelerates glycolysis, the pentose phosphate cycle, and glycogen synthesis in liver.

Insulin Antibody (clone E2E3) - References

- Bell G.I., et al. Nature 284:26-32(1980).
Ullrich A., et al. Science 209:612-615(1980).
Bell G.I., et al. Nature 282:525-527(1979).
Sures I., et al. Science 208:57-59(1980).
Lucassen A.M., et al. Nat. Genet. 4:305-310(1993).