

KRT5 / CK5 / Cytokeratin 5 Antibody (clone 2C2)
Mouse Monoclonal Antibody
Catalog # ALS15737

Specification

KRT5 / CK5 / Cytokeratin 5 Antibody (clone 2C2) - Product Information

Application	IF
Primary Accession	P13647
Reactivity	Human, Mouse, Monkey
Host	Mouse
Clonality	Monoclonal
Calculated MW	62kDa KDa

KRT5 / CK5 / Cytokeratin 5 Antibody (clone 2C2) - Additional Information

Gene ID 3852

Other Names

Keratin, type II cytoskeletal 5, 58 kDa cyokeratin, Cytokeratin-5, CK-5, Keratin-5, K5, Type-II keratin Kb5, KRT5

Target/Specificity

Human Cytokeratin 5 / Keratin 5

Reconstitution & Storage

Long term: -20°C; Short term: +4°C; Avoid freeze-thaw cycles.

Precautions

KRT5 / CK5 / Cytokeratin 5 Antibody (clone 2C2) is for research use only and not for use in diagnostic or therapeutic procedures.

KRT5 / CK5 / Cytokeratin 5 Antibody (clone 2C2) - Protein Information

Name KRT5

Function

Required for the formation of keratin intermediate filaments in the basal epidermis and maintenance of the skin barrier in response to mechanical stress (By similarity). Regulates the recruitment of Langerhans cells to the epidermis, potentially by modulation of the abundance of macrophage chemotactic cytokines, macrophage inflammatory cytokines and CTNND1 localization in keratinocytes (By similarity).

Cellular Location

Cytoplasm.

Tissue Location

Expressed in corneal epithelium (at protein level) (PubMed:26758872). Expressed in keratinocytes (at protein level) (PubMed:20128788, PubMed:31302245).

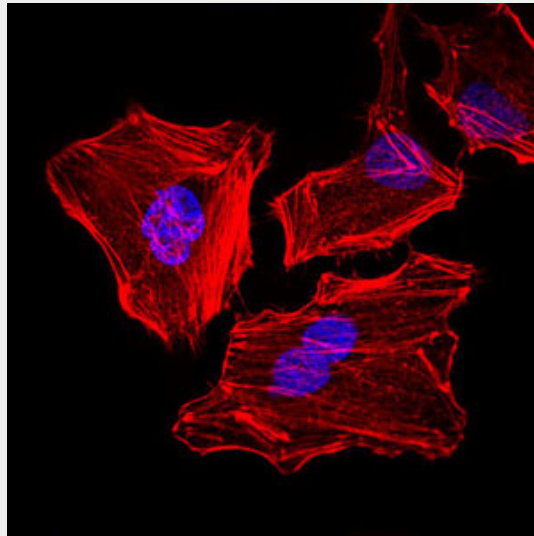
Volume
50 μ l

KRT5 / CK5 / Cytokeratin 5 Antibody (clone 2C2) - Protocols

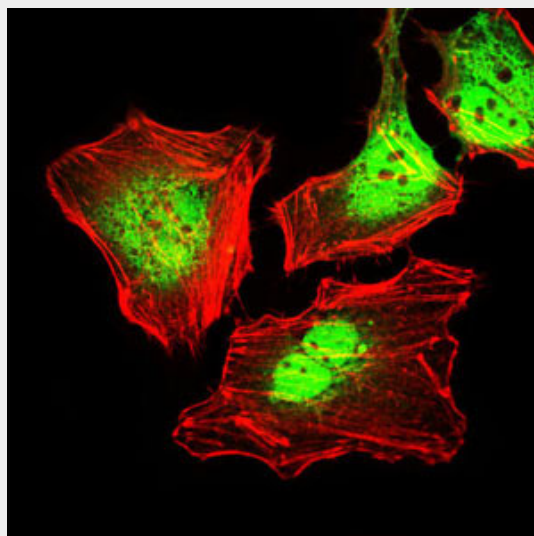
Provided below are standard protocols that you may find useful for product applications.

- [Western Blot](#)
- [Blocking Peptides](#)
- [Dot Blot](#)
- [Immunohistochemistry](#)
- [Immunofluorescence](#)
- [Immunoprecipitation](#)
- [Flow Cytometry](#)
- [Cell Culture](#)

KRT5 / CK5 / Cytokeratin 5 Antibody (clone 2C2) - Images



Immunofluorescence of HeLa cells.



Immunofluorescence of HeLa cells using CK5 mouse monoclonal antibody (green).

KRT5 / CK5 / Cytokeratin 5 Antibody (clone 2C2) - References

Eckert R.L.,et al.DNA 7:337-345(1988).

Lersch R.,et al.Mol. Cell. Biol. 9:3685-3697(1989).

Whitlock N.V.,et al.Biochem. Biophys. Res. Commun. 274:149-152(2000).

Lersch R.,et al.Mol. Cell. Biol. 8:486-493(1988).

Xu Z.,et al.Clin. Exp. Dermatol. 29:74-76(2004).