

MB / Myoglobin Antibody (clone AT6E10)
Mouse Monoclonal Antibody
Catalog # ALS15728**Specification**

MB / Myoglobin Antibody (clone AT6E10) - Product Information

Application	WB, IHC
Primary Accession	P02144
Reactivity	Human, Mouse
Host	Mouse
Clonality	Monoclonal
Calculated MW	17kDa KDa

MB / Myoglobin Antibody (clone AT6E10) - Additional Information**Gene ID** 4151**Other Names**
Myoglobin, MB**Target/Specificity**
Human Myoglobin**Reconstitution & Storage**

Can be stored at 4°C. For long term storage, aliquot and store at -20°C. Avoid repeated freezing and thawing cycles.

Precautions

MB / Myoglobin Antibody (clone AT6E10) is for research use only and not for use in diagnostic or therapeutic procedures.

MB / Myoglobin Antibody (clone AT6E10) - Protein Information**Name** MB ([HGNC:6915](#))**Function**

Monomeric heme protein which primary function is to store oxygen and facilitate its diffusion within muscle tissues. Reversibly binds oxygen through a pentacoordinated heme iron and enables its timely and efficient release as needed during periods of heightened demand (PubMed:30918256, PubMed:34679218). Depending on the oxidative conditions of tissues and cells, and in addition to its ability to bind oxygen, it also has a nitrite reductase activity whereby it regulates the production of bioactive nitric oxide (PubMed:32891753). Under stress conditions, like hypoxia and anoxia, it also protects cells against reactive oxygen species thanks to its pseudoperoxidase activity (PubMed:34679218).

Cellular Location

Cytoplasm, sarcoplasm

Volume

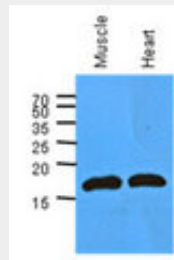
50 μ l

MB / Myoglobin Antibody (clone AT6E10) - Protocols

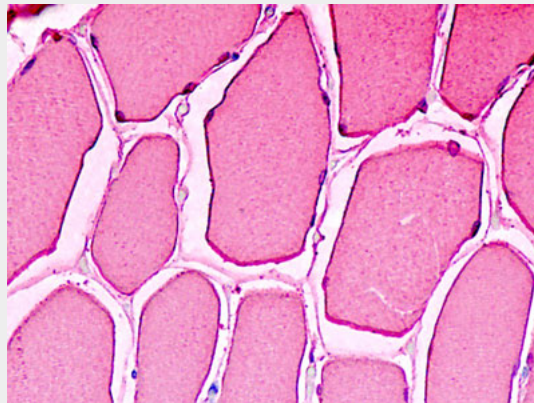
Provided below are standard protocols that you may find useful for product applications.

- [Western Blot](#)
- [Blocking Peptides](#)
- [Dot Blot](#)
- [Immunohistochemistry](#)
- [Immunofluorescence](#)
- [Immunoprecipitation](#)
- [Flow Cytometry](#)
- [Cell Culture](#)

MB / Myoglobin Antibody (clone AT6E10) - Images



Western Blot: The extracts of mouse muscle and heart (40 ug) were resolved by SDS-PAGE,...



Anti-MB / Myoglobin antibody IHC staining of human skeletal muscle.

MB / Myoglobin Antibody (clone AT6E10) - Background

Serves as a reserve supply of oxygen and facilitates the movement of oxygen within muscles.

MB / Myoglobin Antibody (clone AT6E10) - References

Weller P., et al. EMBO J. 3:439-446(1984).
Akaboshi E., et al. Gene 33:241-249(1985).

Collins J.E., et al. *Genome Biol.* 5:R84.1-R84.11(2004).

Ebert L., et al. Submitted (JUN-2004) to the EMBL/GenBank/DDBJ databases.

Dunham I., et al. *Nature* 402:489-495(1999).