

**SHH / Sonic Hedgehog Antibody (clone 8G3)**  
**Mouse Monoclonal Antibody**  
**Catalog # ALS15710****Specification**

---

**SHH / Sonic Hedgehog Antibody (clone 8G3) - Product Information**

Application	IHC
Primary Accession	<a href="#">Q15465</a>
Reactivity	Human
Host	Mouse
Clonality	Monoclonal
Calculated MW	50kDa KDa

**SHH / Sonic Hedgehog Antibody (clone 8G3) - Additional Information****Gene ID** 6469**Other Names**

Sonic hedgehog protein, SHH, HHG-1, Sonic hedgehog protein N-product, Sonic hedgehog protein C-product, SHH

**Target/Specificity**

Human Sonic Hedgehog / SHH

**Reconstitution & Storage**

Long term: -20°C; Short term: +4°C; Avoid freeze-thaw cycles.

**Precautions**

SHH / Sonic Hedgehog Antibody (clone 8G3) is for research use only and not for use in diagnostic or therapeutic procedures.

**SHH / Sonic Hedgehog Antibody (clone 8G3) - Protein Information****Name** SHH ([HGNC:10848](#))**Function**

[Sonic hedgehog protein]: The C-terminal part of the sonic hedgehog protein precursor displays an autoproteolysis and a cholesterol transferase activity (By similarity). Both activities result in the cleavage of the full-length protein into two parts (ShhN and ShhC) followed by the covalent attachment of a cholesterol moiety to the C-terminal of the newly generated ShhN (By similarity). Both activities occur in the reticulum endoplasmic (By similarity). Once cleaved, ShhC is degraded in the endoplasmic reticulum (By similarity).

**Cellular Location**

[Sonic hedgehog protein]: Endoplasmic reticulum membrane. Golgi apparatus membrane. Secreted Note=Co-localizes with HHAT in the ER and Golgi membrane

**Volume**

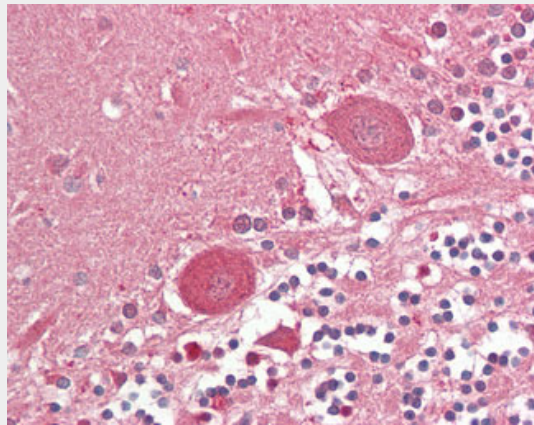
50 µl

### SHH / Sonic Hedgehog Antibody (clone 8G3) - Protocols

Provided below are standard protocols that you may find useful for product applications.

- [Western Blot](#)
- [Blocking Peptides](#)
- [Dot Blot](#)
- [Immunohistochemistry](#)
- [Immunofluorescence](#)
- [Immunoprecipitation](#)
- [Flow Cytometry](#)
- [Cell Culture](#)

### SHH / Sonic Hedgehog Antibody (clone 8G3) - Images



Anti-Sonic Hedgehog / SHH antibody IHC staining of human brain, cerebellum.

### SHH / Sonic Hedgehog Antibody (clone 8G3) - Background

Intercellular signal essential for a variety of patterning events during development: signal produced by the notochord that induces ventral cell fate in the neural tube and somites, and the polarizing signal for patterning of the anterior- posterior axis of the developing limb bud. Displays both floor plate- and motor neuron-inducing activity. The threshold concentration of N-product required for motor neuron induction is 5-fold lower than that required for floor plate induction. Activates the transcription of target genes by interacting with its receptor PTCH1 to prevent normal inhibition by PTCH1 on the constitutive signaling activity of SMO (By similarity).

### SHH / Sonic Hedgehog Antibody (clone 8G3) - References

- Marigo V., et al. Genomics 28:44-51(1995).  
Tate G., et al. J. Biochem. Mol. Biol. Biophys. 4:27-34(2000).  
Hillier L.W., et al. Nature 424:157-164(2003).  
Scherer S.W., et al. Science 300:767-772(2003).  
Pepinsky R.B., et al. J. Biol. Chem. 273:14037-14045(1998).