

SCUBE3 Antibody (Internal)
Rabbit Polyclonal Antibody
Catalog # ALS15650**Specification**

SCUBE3 Antibody (Internal) - Product Information

Application	IHC, IF, WB
Primary Accession	O8IX30
Reactivity	Human
Host	Rabbit
Clonality	Polyclonal
Calculated MW	109kDa KDa

SCUBE3 Antibody (Internal) - Additional Information**Gene ID** 222663**Other Names**

Signal peptide, CUB and EGF-like domain-containing protein 3, SCUBE3 ([HGNC:13655](http://www.genenames.org/cgi-bin/gene_symbol_report?hgnc_id=13655))

Target/Specificity

Human SCUBE3. At least two isoforms of SCUBE3 are known to exist. SCUBE3 antibody is predicted to not cross-react with other SCUBE members.

Reconstitution & Storage

Long term: -20°C; Short term: +4°C. Avoid repeat freeze-thaw cycles.

Precautions

SCUBE3 Antibody (Internal) is for research use only and not for use in diagnostic or therapeutic procedures.

SCUBE3 Antibody (Internal) - Protein Information**Name** SCUBE3 ([HGNC:13655](#))**Function**

Is a positive regulator of the BMP signaling pathway, required for proper chondrogenesis, osteogenesis and skeletal development. It acts as a coreceptor for BMP ligands, particularly BMP2 and BMP4, facilitating their interactions with BMP type I receptors (PubMed:[33308444](http://www.uniprot.org/citations/33308444)). It is required for ligand-induced recruitment of BMP receptors to lipid rafts (By similarity). Binds to TGFBR2 and activates TGFBR2 signaling. In lung cancer cells, could serve as an endogenous autocrine and paracrine ligand of TGFBR2, which could regulate TGFBR2 signaling and hence modulate epithelial-mesenchymal transition and cancer progression.

Cellular Location

Secreted. Cell surface

Tissue Location

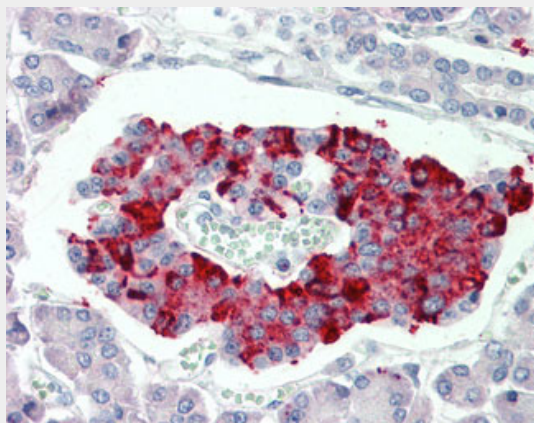
Highly expressed in osteoblasts. In normal lung, mainly expressed in bronchial epithelial cells. Tends to be up-regulated in lung cancer cells.

SCUBE3 Antibody (Internal) - Protocols

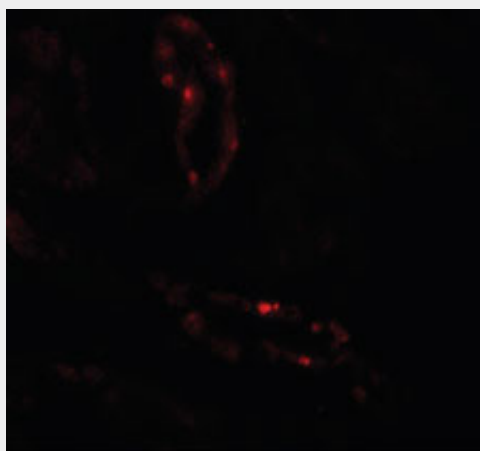
Provided below are standard protocols that you may find useful for product applications.

- [Western Blot](#)
- [Blocking Peptides](#)
- [Dot Blot](#)
- [Immunohistochemistry](#)
- [Immunofluorescence](#)
- [Immunoprecipitation](#)
- [Flow Cytometry](#)
- [Cell Culture](#)

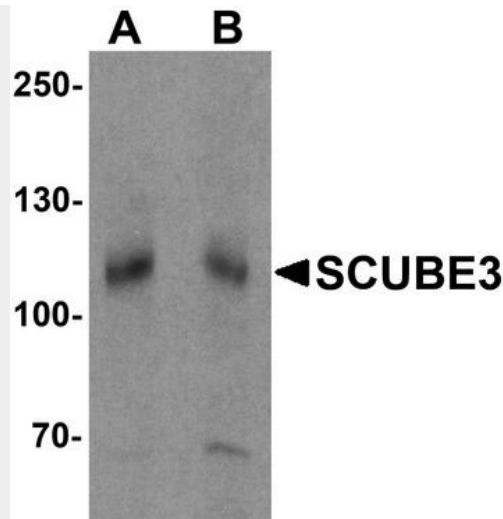
SCUBE3 Antibody (Internal) - Images



Anti-SCUBE3 antibody IHC staining of human pancreas.



Immunofluorescence of SCUBE3 in human kidney tissue with SCUBE3 antibody at 20 ug/ml.



Western blot analysis of SCUBE3 in mouse kidney tissue lysate with SCUBE3 antibody at (A) 1 and...

SCUBE3 Antibody (Internal) - Background

Binds to TGFBR2 and activates TGF β signaling. In lung cancer cells, could serve as an endogenous autocrine and paracrine ligand of TGFBR2, which could regulate TGFBR2 signaling and hence modulate epithelial-mesenchymal transition and cancer progression.

SCUBE3 Antibody (Internal) - References

Wu B.-T., et al. *J. Biol. Chem.* 279:37485-37490(2004).
Pfarr N., et al. Submitted (NOV-2001) to the EMBL/GenBank/DDBJ databases.
Ota T., et al. *Nat. Genet.* 36:40-45(2004).
Mungall A.J., et al. *Nature* 425:805-811(2003).
Mural R.J., et al. Submitted (JUL-2005) to the EMBL/GenBank/DDBJ databases.