

**CLEC7A / Dectin 1 Antibody (Internal)**  
**Rabbit Polyclonal Antibody**  
**Catalog # ALS15621****Specification**

---

**CLEC7A / Dectin 1 Antibody (Internal) - Product Information**

Application	IHC, IF, WB
Primary Accession	<a href="#">Q9BXN2</a>
Reactivity	Human
Host	Rabbit
Clonality	Polyclonal
Calculated MW	28kDa KDa

**CLEC7A / Dectin 1 Antibody (Internal) - Additional Information****Gene ID** 64581**Other Names**

C-type lectin domain family 7 member A, Beta-glucan receptor, C-type lectin superfamily member 12, Dendritic cell-associated C-type lectin 1, DC-associated C-type lectin 1, Dectin-1, CLEC7A, BGR, CLECSF12, DECTIN1

**Target/Specificity**

Human CLEC7A / Dectin 1. Multiple isoforms of CLEC7A are known to exist. Immunogenic peptide is conserved among isoforms 1, 3, and 4 (Q9BXN2).

**Reconstitution & Storage**

Store at -20°C. Aliquot to avoid freeze/thaw cycles.

**Precautions**

CLEC7A / Dectin 1 Antibody (Internal) is for research use only and not for use in diagnostic or therapeutic procedures.

**CLEC7A / Dectin 1 Antibody (Internal) - Protein Information****Name** CLEC7A ([HGNC:14558](#))**Function**

Lectin that functions as a pattern recognizing receptor (PRR) specific for beta-1,3-linked and beta-1,6-linked glucans, which constitute cell wall constituents from pathogenic bacteria and fungi (PubMed:<a href="http://www.uniprot.org/citations/11567029" target="\_blank">11567029</a>, PubMed:<a href="http://www.uniprot.org/citations/12423684" target="\_blank">12423684</a>). Necessary for the TLR2-mediated inflammatory response and activation of NF-kappa-B: upon beta-glucan binding, recruits SYK via its ITAM motif and promotes a signaling cascade that activates some CARD domain-BCL10-MALT1 (CBM) signalosomes, leading to the activation of NF-kappa-B and MAP kinase p38 (MAPK11, MAPK12, MAPK13 and/or MAPK14) pathways which stimulate expression of genes encoding pro-inflammatory cytokines and chemokines (By similarity). Enhances cytokine production in macrophages and dendritic cells (By similarity).

Mediates production of reactive oxygen species in the cell (By similarity). Mediates phagocytosis of *C.albicans* conidia (PubMed:<a href="http://www.uniprot.org/citations/17230442" target="\_blank">17230442</a>). Binds T-cells in a way that does not involve their surface glycans and plays a role in T-cell activation. Stimulates T-cell proliferation. Induces phosphorylation of SCIMP after binding beta-glucans (By similarity).

#### Cellular Location

Cell membrane; Single-pass type II membrane protein [Isoform 6]: Cytoplasm.

#### Tissue Location

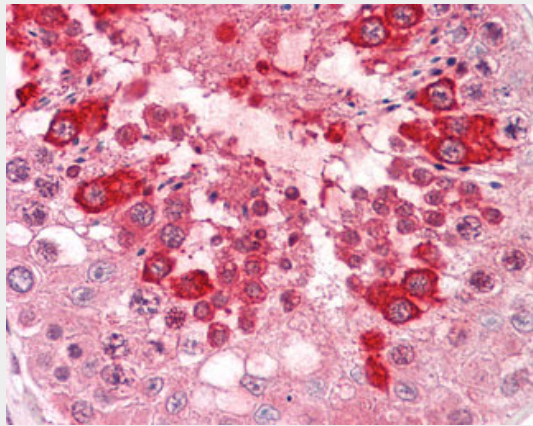
Highly expressed in peripheral blood leukocytes and dendritic cells. Detected in spleen, bone marrow, lung, muscle, stomach and placenta.

### CLEC7A / Dectin 1 Antibody (Internal) - Protocols

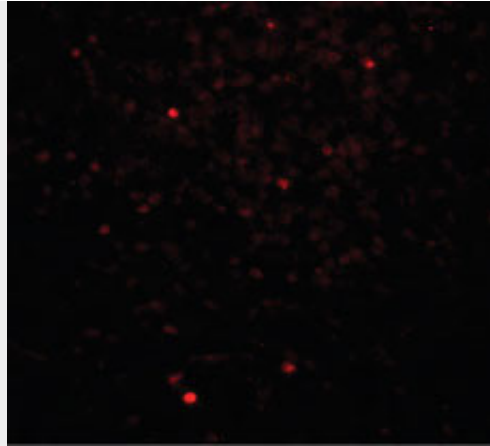
Provided below are standard protocols that you may find useful for product applications.

- [Western Blot](#)
- [Blocking Peptides](#)
- [Dot Blot](#)
- [Immunohistochemistry](#)
- [Immunofluorescence](#)
- [Immunoprecipitation](#)
- [Flow Cytometry](#)
- [Cell Culture](#)

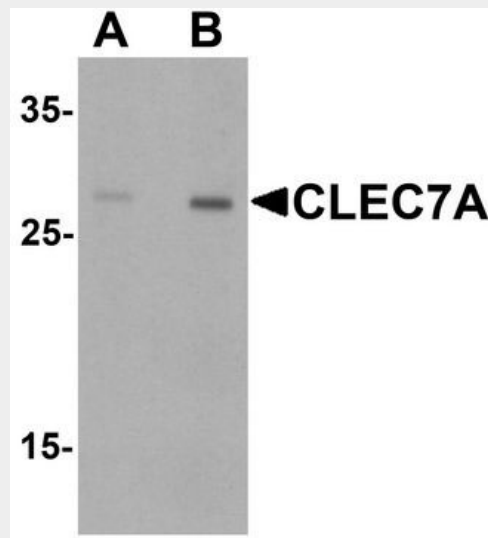
### CLEC7A / Dectin 1 Antibody (Internal) - Images



Anti-CLEC7A / Dectin 1 antibody IHC staining of human testis.



Immunofluorescence of CLEC7A in human spleen tissue with CLEC7A antibody at 20 ug/ml.



Western blot analysis of CLEC7A in rat spleen tissue lysate with CLEC7A antibody at (A) 1 and...

#### **CLEC7A / Dectin 1 Antibody (Internal) - Background**

Lectin that functions as pattern receptor specific for beta-1,3-linked and beta-1,6-linked glucans, such as cell wall constituents from pathogenic bacteria and fungi. Necessary for the TLR2-mediated inflammatory response and for TLR2-mediated activation of NF-kappa-B. Enhances cytokine production in macrophages and dendritic cells. Mediates production of reactive oxygen species in the cell. Mediates phagocytosis of *C.albicans* conidia. Binds T-cells in a way that does not involve their surface glycans and plays a role in T-cell activation. Stimulates T-cell proliferation (By similarity).

#### **CLEC7A / Dectin 1 Antibody (Internal) - References**

- Sobanov Y., et al. *Eur. J. Immunol.* 31:3493-3503(2001).
- Yokota K., et al. *Gene* 272:51-60(2001).
- Hernanz-Falcon P., et al. *Immunogenetics* 53:288-295(2001).
- Willment J.A., et al. *J. Biol. Chem.* 276:43818-43823(2001).
- Gruenebach F., et al. *Exp. Hematol.* 30:1309-1315(2002).