

PLCG2 Antibody
Rabbit Polyclonal Antibody
Catalog # ALS15580

Specification

PLCG2 Antibody - Product Information

Application	IHC, WB
Primary Accession	P16885
Reactivity	Human
Host	Rabbit
Clonality	Polyclonal
Calculated MW	148kDa KDa

PLCG2 Antibody - Additional Information

Gene ID 5336

Other Names

1-phosphatidylinositol 4, 5-bisphosphate phosphodiesterase gamma-2, 3.1.4.11, Phosphoinositide phospholipase C-gamma-2, Phospholipase C-IV, PLC-IV, Phospholipase C-gamma-2, PLC-gamma-2, PLCG2

Target/Specificity

The antibody recognizes 139 kD human PLC gamma 1 &2. Jurkat cell lysate can be used as a positive control. Reactivity to other species has not been determined.

Reconstitution & Storage

Store at -20°C. Aliquot to avoid freeze/thaw cycles. Store undiluted.

Precautions

PLCG2 Antibody is for research use only and not for use in diagnostic or therapeutic procedures.

PLCG2 Antibody - Protein Information

Name PLCG2 ([HGNC:9066](#))

Function

The production of the second messenger molecules diacylglycerol (DAG) and inositol 1,4,5-trisphosphate (IP3) is mediated by activated phosphatidylinositol-specific phospholipase C enzymes. It is a crucial enzyme in transmembrane signaling.

Cellular Location

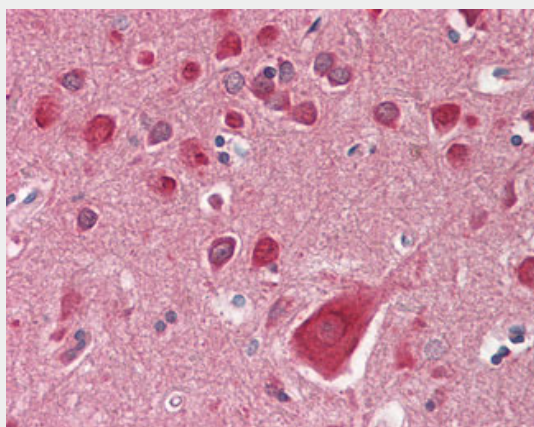
Membrane raft {ECO:0000250|UniProtKB:Q8CIH5}.

PLCG2 Antibody - Protocols

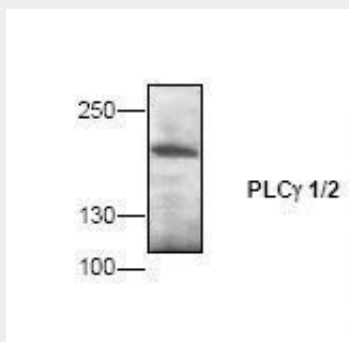
Provided below are standard protocols that you may find useful for product applications.

- [Western Blot](#)
- [Blocking Peptides](#)
- [Dot Blot](#)
- [Immunohistochemistry](#)
- [Immunofluorescence](#)
- [Immunoprecipitation](#)
- [Flow Cytometry](#)
- [Cell Culture](#)

PLCG2 Antibody - Images



Anti-PLCG2 antibody IHC staining of human brain, cortex.



Western blot of PLCG1 antibody in Jurkat cell lysate.

PLCG2 Antibody - Background

The production of the second messenger molecules diacylglycerol (DAG) and inositol 1,4,5-trisphosphate (IP₃) is mediated by activated phosphatidylinositol-specific phospholipase C enzymes. It is a crucial enzyme in transmembrane signaling.

PLCG2 Antibody - References

- Ohta S., et al. *FEBS Lett.* 242:31-35(1988).
Totoki Y., et al. Submitted (MAR-2005) to the EMBL/GenBank/DDBJ databases.
Kemmer D., et al. *BMC Genomics* 7:48-48(2006).
Martin J., et al. *Nature* 432:988-994(2004).
Mural R.J., et al. Submitted (SEP-2005) to the EMBL/GenBank/DDBJ databases.