

**AGR2 Antibody (aa50-100, clone IMG10E2)**  
**Mouse Monoclonal Antibody**  
**Catalog # ALS15546**

### Specification

---

#### AGR2 Antibody (aa50-100, clone IMG10E2) - Product Information

Application	WB
Primary Accession	<a href="#">O95994</a>
Reactivity	Human, Mouse, Horse, Bovine, Dog
Host	Mouse
Clonality	Monoclonal
Calculated MW	20kDa KDa

#### AGR2 Antibody (aa50-100, clone IMG10E2) - Additional Information

Gene ID 10551

#### Other Names

Anterior gradient protein 2 homolog, AG-2, hAG-2, HPC8, Secreted cement gland protein XAG-2 homolog, AGR2, AG2

#### Target/Specificity

Human AGR2

#### Reconstitution & Storage

Store at 4°C for short term applications. For long term storage, aliquot and store at -20°C.

#### Precautions

AGR2 Antibody (aa50-100, clone IMG10E2) is for research use only and not for use in diagnostic or therapeutic procedures.

#### AGR2 Antibody (aa50-100, clone IMG10E2) - Protein Information

Name AGR2

Synonyms AG2

#### Function

Required for MUC2 post-transcriptional synthesis and secretion. May play a role in the production of mucus by intestinal cells (By similarity). Proto-oncogene that may play a role in cell migration, cell differentiation and cell growth. Promotes cell adhesion (PubMed:<a href="http://www.uniprot.org/citations/23274113" target="\_blank">23274113</a>).

#### Cellular Location

Secreted. Endoplasmic reticulum {ECO:0000250|UniProtKB:O88312}

#### Tissue Location

Expressed strongly in trachea, lung, stomach, colon, prostate and small intestine. Expressed

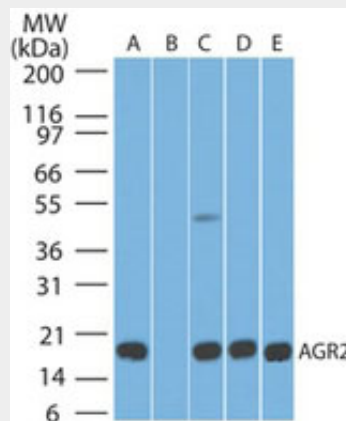
weakly in pituitary gland, salivary gland, mammary gland, bladder, appendix, ovary, fetal lung, uterus, pancreas, kidney, fetal kidney, testis, placenta, thyroid gland and in estrogen receptor (ER)-positive breast cancer cell lines

### **AGR2 Antibody (aa50-100, clone IMG10E2) - Protocols**

Provided below are standard protocols that you may find useful for product applications.

- [Western Blot](#)
- [Blocking Peptides](#)
- [Dot Blot](#)
- [Immunohistochemistry](#)
- [Immunofluorescence](#)
- [Immunoprecipitation](#)
- [Flow Cytometry](#)
- [Cell Culture](#)

### **AGR2 Antibody (aa50-100, clone IMG10E2) - Images**



Western blot of AGR2 in A) human stomach tissue lysate in the absence of immunizing peptide, B)...

### **AGR2 Antibody (aa50-100, clone IMG10E2) - Background**

Required for MUC2 post-transcriptional synthesis and secretion. May play a role in the production of mucus by intestinal cells (By similarity). Proto-oncogene that may play a role in cell migration, cell differentiation and cell growth.

### **AGR2 Antibody (aa50-100, clone IMG10E2) - References**

Thompson D.A., et al. *Biochem. Biophys. Res. Commun.* 251:111-116(1998).  
Zhang J.S., et al. Submitted (DEC-1998) to the EMBL/GenBank/DDBJ databases.  
Fan Y.X., et al. Submitted (JUL-2003) to the EMBL/GenBank/DDBJ databases.  
Clark H.F., et al. *Genome Res.* 13:2265-2270(2003).  
Kalnina N., et al. Submitted (MAY-2003) to the EMBL/GenBank/DDBJ databases.