

**CEA / Carcinoembryonic Antigen Antibody**  
**Rabbit Polyclonal Antibody**  
**Catalog # ALS15541**

**Specification**

---

**CEA / Carcinoembryonic Antigen Antibody - Product Information**

Application	IHC
Primary Accession	<a href="#">P06731</a>
Reactivity	Human, Mouse
Host	Rabbit
Clonality	Polyclonal

**CEA / Carcinoembryonic Antigen Antibody - Additional Information**

**Gene ID** 1048

**Other Names**

Carcinoembryonic antigen-related cell adhesion molecule 5, Carcinoembryonic antigen, CEA, Meconium antigen 100, CD66e, CEACAM5, CEA

**Reconstitution & Storage**

+4°C, avoid freezing

**Precautions**

CEA / Carcinoembryonic Antigen Antibody is for research use only and not for use in diagnostic or therapeutic procedures.

**CEA / Carcinoembryonic Antigen Antibody - Protein Information**

**Name** CEACAM5

**Synonyms** CEA

**Function**

Cell surface glycoprotein that plays a role in cell adhesion, intracellular signaling and tumor progression (PubMed: [10864933](http://www.uniprot.org/citations/10864933), PubMed: [10910050](http://www.uniprot.org/citations/10910050), PubMed: [2803308](http://www.uniprot.org/citations/2803308)). Mediates homophilic and heterophilic cell adhesion with other carcinoembryonic antigen-related cell adhesion molecules, such as CEACAM6 (PubMed: [2803308](http://www.uniprot.org/citations/2803308)). Plays a role as an oncogene by promoting tumor progression; induces resistance to anoikis of colorectal carcinoma cells (PubMed: [10910050](http://www.uniprot.org/citations/10910050)).

**Cellular Location**

Cell membrane; Lipid-anchor, GPI-anchor. Apical cell membrane. Cell surface Note=Localized to the apical glycolyx surface

### Tissue Location

Expressed in columnar epithelial and goblet cells of the colon (at protein level) (PubMed:10436421). Found in adenocarcinomas of endodermally derived digestive system epithelium and fetal colon.

### Volume

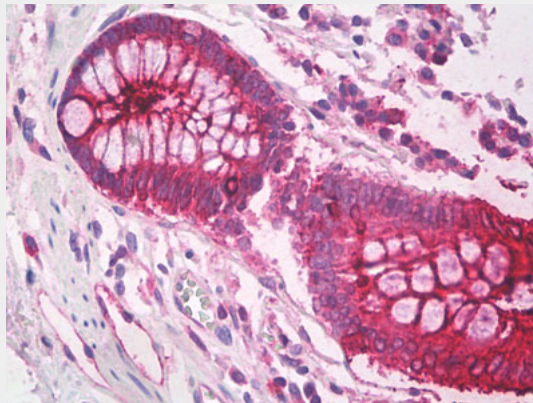
250  $\mu$ l

### CEA / Carcinoembryonic Antigen Antibody - Protocols

Provided below are standard protocols that you may find useful for product applications.

- [Western Blot](#)
- [Blocking Peptides](#)
- [Dot Blot](#)
- [Immunohistochemistry](#)
- [Immunofluorescence](#)
- [Immunoprecipitation](#)
- [Flow Cytometry](#)
- [Cell Culture](#)

### CEA / Carcinoembryonic Antigen Antibody - Images



Anti-CEACAM5 / CEA antibody IHC of human colon, epithelium.