

SPN / CD43 Antibody (clone 84-3C1)
Mouse Monoclonal Antibody
Catalog # ALS15536

Specification

SPN / CD43 Antibody (clone 84-3C1) - Product Information

Application	IHC
Primary Accession	P16150
Reactivity	Human
Host	Mouse
Clonality	Monoclonal

SPN / CD43 Antibody (clone 84-3C1) - Additional Information

Gene ID 6693

Other Names

Leukosialin, Galactoglycoprotein, GALGP, Leukocyte sialoglycoprotein, Sialophorin, CD43, SPN, CD43

Reconstitution & Storage

+4°C, avoid freezing

Precautions

SPN / CD43 Antibody (clone 84-3C1) is for research use only and not for use in diagnostic or therapeutic procedures.

SPN / CD43 Antibody (clone 84-3C1) - Protein Information

Name SPN

Synonyms CD43

Function

Predominant cell surface sialoprotein of leukocytes which regulates multiple T-cell functions, including T-cell activation, proliferation, differentiation, trafficking and migration. Positively regulates T-cell trafficking to lymph-nodes via its association with ERM proteins (EZR, RDX and MSN) (By similarity). Negatively regulates Th2 cell differentiation and predisposes the differentiation of T-cells towards a Th1 lineage commitment. Promotes the expression of IFN-gamma by T-cells during T-cell receptor (TCR) activation of naive cells and induces the expression of IFN-gamma by CD4(+) T-cells and to a lesser extent by CD8(+) T-cells (PubMed:18036228). Plays a role in preparing T-cells for cytokine sensing and differentiation into effector cells by inducing the expression of cytokine receptors IFNGR and IL4R, promoting IFNGR and IL4R signaling and by mediating the clustering of IFNGR with TCR (PubMed:24328034). Acts as a major E-selectin ligand responsible for Th17 cell rolling on activated vasculature and recruitment during inflammation. Mediates Th17 cells, but not Th1 cells, adhesion to E- selectin. Acts as a

T-cell counter-receptor for SIGLEC1 (By similarity).

Cellular Location

Membrane; Single-pass type I membrane protein. Cell projection, microvillus {ECO:0000250|UniProtKB:P13838}. Cell projection, uropodium {ECO:0000250|UniProtKB:P15702}. Note=Localizes to the uropodium and microvilli via its interaction with ERM proteins (EZR, RDX and MSN) {ECO:0000250|UniProtKB:P13838, ECO:0000250|UniProtKB:P15702}

Tissue Location

Cell surface of thymocytes, T-lymphocytes, neutrophils, plasma cells and myelomas

Volume

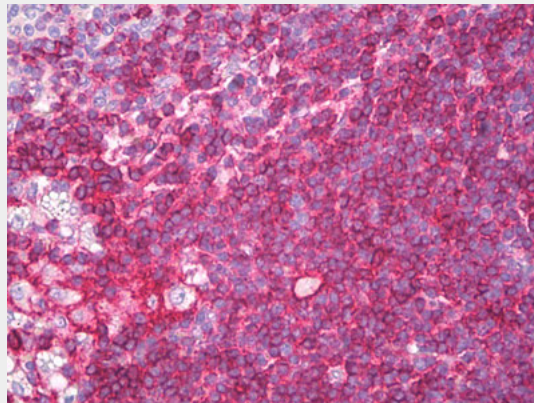
250 μ l

SPN / CD43 Antibody (clone 84-3C1) - Protocols

Provided below are standard protocols that you may find useful for product applications.

- [Western Blot](#)
- [Blocking Peptides](#)
- [Dot Blot](#)
- [Immunohistochemistry](#)
- [Immunofluorescence](#)
- [Immunoprecipitation](#)
- [Flow Cytometry](#)
- [Cell Culture](#)

SPN / CD43 Antibody (clone 84-3C1) - Images



Anti-CD43 antibody IHC of human spleen, t lymphocytes.