

**Pan Cytokeratin Antibody (clone PAN-CK)**  
**Mouse Monoclonal Antibody**  
**Catalog # ALS15532**

**Specification**

---

**Pan Cytokeratin Antibody (clone PAN-CK) - Product Information**

|             |            |
|-------------|------------|
| Application | IHC        |
| Reactivity  | Human      |
| Host        | Mouse      |
| Clonality   | Monoclonal |

**Pan Cytokeratin Antibody (clone PAN-CK) - Additional Information**

**Reconstitution & Storage**

+4°C, avoid freezing

**Precautions**

Pan Cytokeratin Antibody (clone PAN-CK) is for research use only and not for use in diagnostic or therapeutic procedures.

**Pan Cytokeratin Antibody (clone PAN-CK) - Protein Information**

**Volume**

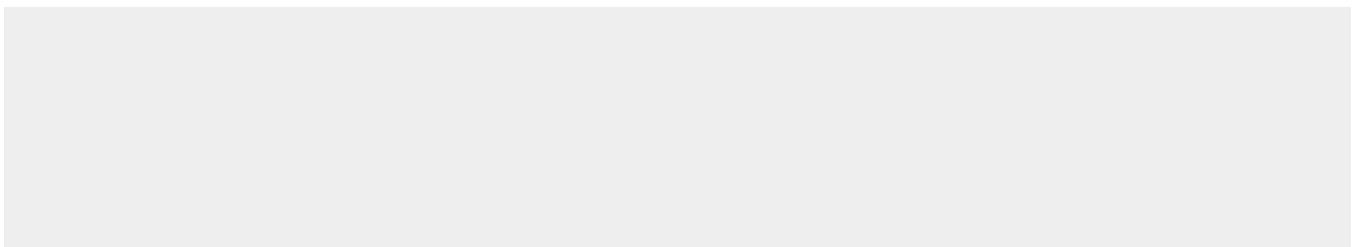
250 µl

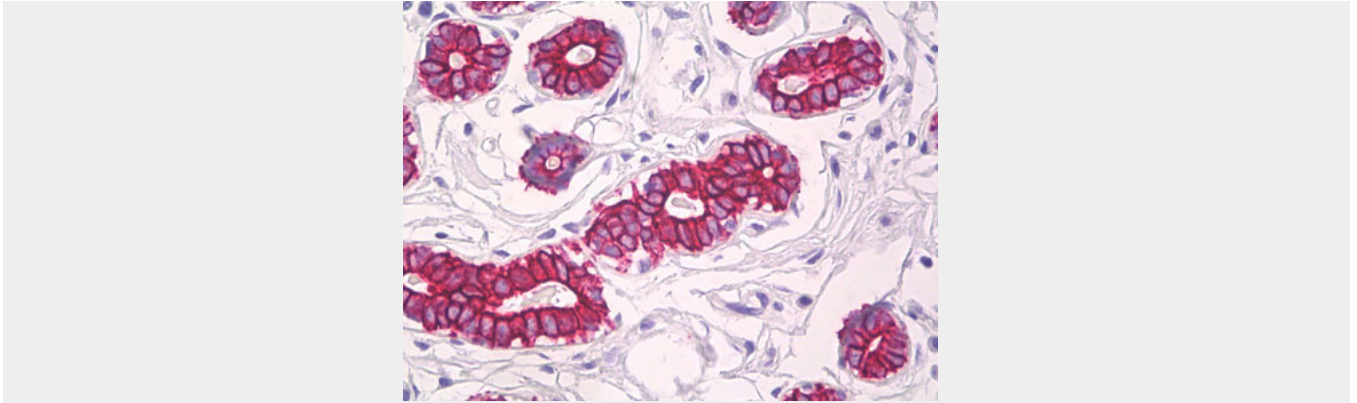
**Pan Cytokeratin Antibody (clone PAN-CK) - Protocols**

Provided below are standard protocols that you may find useful for product applications.

- [Western Blot](#)
- [Blocking Peptides](#)
- [Dot Blot](#)
- [Immunohistochemistry](#)
- [Immunofluorescence](#)
- [Immunoprecipitation](#)
- [Flow Cytometry](#)
- [Cell Culture](#)

**Pan Cytokeratin Antibody (clone PAN-CK) - Images**





Anti-Keratin antibody IHC of human breast, epithelium.