

**CDCA3 Antibody (aa219-268)**  
**Rabbit Polyclonal Antibody**  
**Catalog # ALS15487****Specification**

---

**CDCA3 Antibody (aa219-268) - Product Information**

Application	<b>WB</b>
Primary Accession	<a href="#">O99618</a>
Reactivity	<b>Human, Mouse, Rat</b>
Host	<b>Rabbit</b>
Clonality	<b>Polyclonal</b>
Calculated MW	<b>29kDa KDa</b>

**CDCA3 Antibody (aa219-268) - Additional Information****Gene ID** 83461**Other Names**

Cell division cycle-associated protein 3, Gene-rich cluster protein C8, Trigger of mitotic entry protein 1, TOME-1, CDCA3, C8, GRCC8, TOME1

**Target/Specificity**

CDCA3 Antibody detects endogenous levels of total CDCA3 protein.

**Reconstitution & Storage**

Store at -20°C for up to one year.

**Precautions**

CDCA3 Antibody (aa219-268) is for research use only and not for use in diagnostic or therapeutic procedures.

**CDCA3 Antibody (aa219-268) - Protein Information****Name** CDCA3**Synonyms** C8, GRCC8, TOME1**Function**

F-box-like protein which is required for entry into mitosis. Acts by participating in E3 ligase complexes that mediate the ubiquitination and degradation of WEE1 kinase at G2/M phase (By similarity).

**Cellular Location**

Cytoplasm, cytosol.

**Volume**

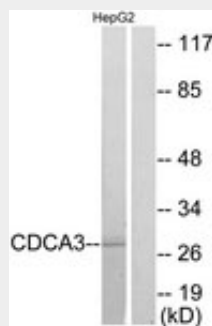
50 µl

## CDCA3 Antibody (aa219-268) - Protocols

Provided below are standard protocols that you may find useful for product applications.

- [Western Blot](#)
- [Blocking Peptides](#)
- [Dot Blot](#)
- [Immunohistochemistry](#)
- [Immunofluorescence](#)
- [Immunoprecipitation](#)
- [Flow Cytometry](#)
- [Cell Culture](#)

## CDCA3 Antibody (aa219-268) - Images



Western blot of extracts from HepG2 cells, using CDCA3 Antibody.

## CDCA3 Antibody (aa219-268) - Background

F-box-like protein which is required for entry into mitosis. Acts by participating in E3 ligase complexes that mediate the ubiquitination and degradation of WEE1 kinase at G2/M phase (By similarity).

## CDCA3 Antibody (aa219-268) - References

- Walker M.G., et al. *Curr. Cancer Drug Targets* 1:73-83(2001).  
Ansari-Lari M.A., et al. *Genome Res.* 7:268-280(1997).  
Ota T., et al. *Nat. Genet.* 36:40-45(2004).  
Mural R.J., et al. Submitted (SEP-2005) to the EMBL/GenBank/DDBJ databases.  
Olsen J.V., et al. *Cell* 127:635-648(2006).