

KLK3 / PSA Antibody (clone 1A7)
Mouse-Balb/c Monoclonal Antibody
Catalog # ALS15470

Specification

KLK3 / PSA Antibody (clone 1A7) - Product Information

Application	ICC, IHC
Primary Accession	P07288
Reactivity	Human
Host	Mouse-Balb/c
Clonality	Monoclonal
Calculated MW	29kDa KDa

KLK3 / PSA Antibody (clone 1A7) - Additional Information

Gene ID 354

Other Names

Prostate-specific antigen, PSA, 3.4.21.77, Gamma-seminoprotein, Semin, Kallikrein-3, P-30 antigen, Semenogelase, KLK3, APS

Reconstitution & Storage

Short term 4°C, long term aliquot and store at -20°C, avoid freeze thaw cycles.

Precautions

KLK3 / PSA Antibody (clone 1A7) is for research use only and not for use in diagnostic or therapeutic procedures.

KLK3 / PSA Antibody (clone 1A7) - Protein Information

Name KLK3

Synonyms APS

Function

Hydrolyzes semenogelin-1 thus leading to the liquefaction of the seminal coagulum.

Cellular Location

Secreted.

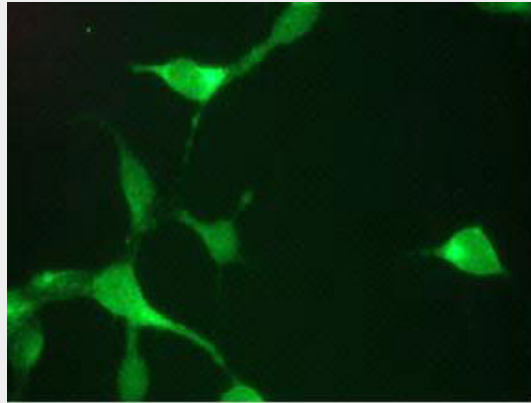
KLK3 / PSA Antibody (clone 1A7) - Protocols

Provided below are standard protocols that you may find useful for product applications.

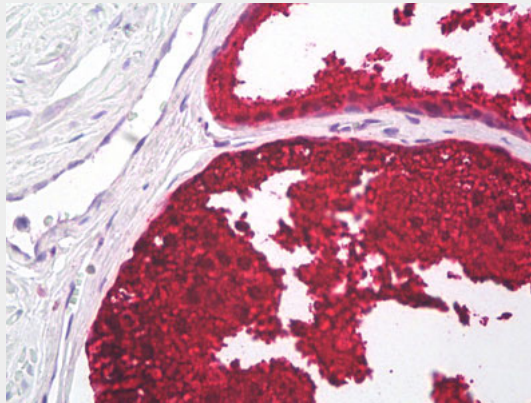
- [Western Blot](#)
- [Blocking Peptides](#)

- [Dot Blot](#)
- [Immunohistochemistry](#)
- [Immunofluorescence](#)
- [Immunoprecipitation](#)
- [Flow Cytometry](#)
- [Cell Culture](#)

KLK3 / PSA Antibody (clone 1A7) - Images



Immunofluorescent staining of LNCaP cells



Anti-PSA antibody IHC of human prostate.

KLK3 / PSA Antibody (clone 1A7) - Background

Hydrolyzes semenogelin-1 thus leading to the liquefaction of the seminal coagulum.

KLK3 / PSA Antibody (clone 1A7) - References

- Lundwall A., et al. FEBS Lett. 214:317-322(1987).
Digby M.R., et al. Nucleic Acids Res. 17:2137-2137(1989).
Klobeck H.-G., et al. Nucleic Acids Res. 17:3981-3981(1989).
Lundwall A., et al. Biochem. Biophys. Res. Commun. 161:1151-1159(1989).
Henttu P., et al. Biochem. Biophys. Res. Commun. 160:903-910(1989).