

TSN / Translin Antibody (aa101-150)
Rabbit Polyclonal Antibody
Catalog # ALS15448

Specification

TSN / Translin Antibody (aa101-150) - Product Information

Application	WB, IHC
Primary Accession	Q15631
Reactivity	Human, Mouse, Rat
Host	Rabbit
Clonality	Polyclonal
Calculated MW	26kDa KDa

TSN / Translin Antibody (aa101-150) - Additional Information

Gene ID 7247

Other Names

Translin, 3.1.-., Component 3 of promoter of RISC, C3PO, TSN

Target/Specificity

TSN Antibody detects endogenous levels of total TSN protein.

Reconstitution & Storage

Store at -20°C for up to one year.

Precautions

TSN / Translin Antibody (aa101-150) is for research use only and not for use in diagnostic or therapeutic procedures.

TSN / Translin Antibody (aa101-150) - Protein Information

Name TSN

Function

DNA-binding protein that specifically recognizes consensus sequences at the breakpoint junctions in chromosomal translocations, mostly involving immunoglobulin (Ig)/T-cell receptor gene segments. Seems to recognize single-stranded DNA ends generated by staggered breaks occurring at recombination hot spots.

Cellular Location

Cytoplasm. Nucleus

Volume

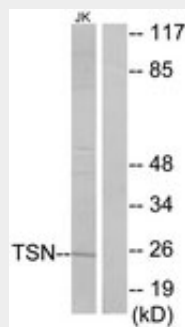
50 µl

TSN / Translin Antibody (aa101-150) - Protocols

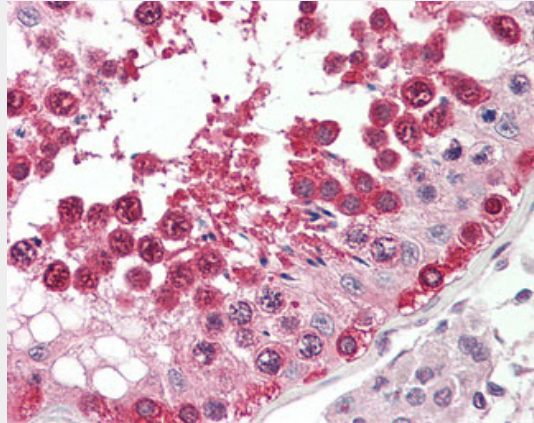
Provided below are standard protocols that you may find useful for product applications.

- [Western Blot](#)
- [Blocking Peptides](#)
- [Dot Blot](#)
- [Immunohistochemistry](#)
- [Immunofluorescence](#)
- [Immunoprecipitation](#)
- [Flow Cytometry](#)
- [Cell Culture](#)

TSN / Translin Antibody (aa101-150) - Images



Western blot of extracts from Jurkat cells, using TSN Antibody.



Anti-Translin antibody IHC of human testis.

TSN / Translin Antibody (aa101-150) - Background

DNA-binding protein that specifically recognizes consensus sequences at the breakpoint junctions in chromosomal translocations, mostly involving immunoglobulin (Ig)/T-cell receptor gene segments. Seems to recognize single-stranded DNA ends generated by staggered breaks occurring at recombination hot spots.

TSN / Translin Antibody (aa101-150) - References

- Aoki K., et al. Nat. Genet. 10:167-174(1995).
Kalnina N., et al. Submitted (MAY-2003) to the EMBL/GenBank/DDBJ databases.
Ota T., et al. Nat. Genet. 36:40-45(2004).
Hillier L.W., et al. Nature 434:724-731(2005).

Aoki K., et al. Genomics 43:237-241(1997).