

SNAP25 Antibody (aa151-200)
Rabbit Polyclonal Antibody
Catalog # ALS15428**Specification**

SNAP25 Antibody (aa151-200) - Product Information

Application	WB, IHC
Primary Accession	P60880
Reactivity	Human, Mouse, Rat
Host	Rabbit
Clonality	Polyclonal
Calculated MW	23kDa KDa

SNAP25 Antibody (aa151-200) - Additional Information**Gene ID** 6616**Other Names**

Synaptosomal-associated protein 25, SNAP-25, Super protein, SUP, Synaptosomal-associated 25 kDa protein, SNAP25, SNAP

Target/Specificity

SNAP25 Antibody detects endogenous levels of total SNAP25 protein.

Reconstitution & Storage

Store at -20°C for up to one year.

Precautions

SNAP25 Antibody (aa151-200) is for research use only and not for use in diagnostic or therapeutic procedures.

SNAP25 Antibody (aa151-200) - Protein Information**Name** SNAP25**Synonyms** SNAP**Function**

t-SNARE involved in the molecular regulation of neurotransmitter release. May play an important role in the synaptic function of specific neuronal systems. Associates with proteins involved in vesicle docking and membrane fusion. Regulates plasma membrane recycling through its interaction with CENPF. Modulates the gating characteristics of the delayed rectifier voltage-dependent potassium channel KCNB1 in pancreatic beta cells.

Cellular Location

Cytoplasm, perinuclear region {ECO:0000250|UniProtKB:P60879}. Cell membrane {ECO:0000250|UniProtKB:P60881}; Lipid-anchor {ECO:0000250|UniProtKB:P60879}. Synapse, synaptosome {ECO:0000250|UniProtKB:P60879}. Photoreceptor inner segment

{ECO:0000250|UniProtKB:P60879}. Note=Membrane association requires palmitoylation. Expressed throughout cytoplasm, concentrating at the perinuclear region. Colocalizes with KCNB1 at the cell membrane (By similarity). Colocalizes with PLCL1 at the cell membrane (By similarity). {ECO:0000250|UniProtKB:P60879, ECO:0000250|UniProtKB:P60881}

Tissue Location

Neurons of the neocortex, hippocampus, piriform cortex, anterior thalamic nuclei, pontine nuclei, and granule cells of the cerebellum

Volume

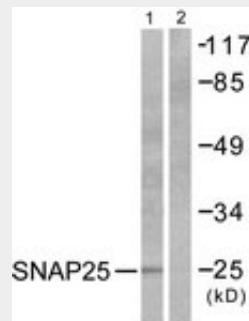
50 μ l

SNAP25 Antibody (aa151-200) - Protocols

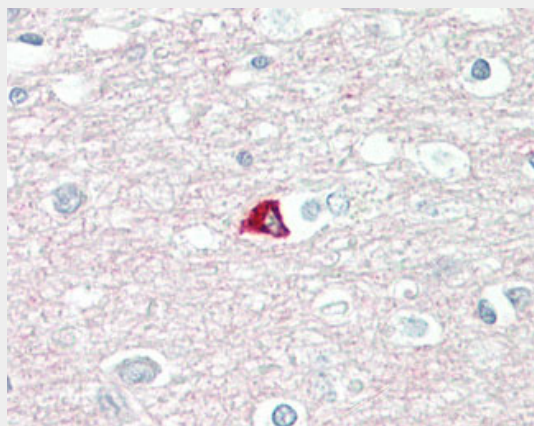
Provided below are standard protocols that you may find useful for product applications.

- [Western Blot](#)
- [Blocking Peptides](#)
- [Dot Blot](#)
- [Immunohistochemistry](#)
- [Immunofluorescence](#)
- [Immunoprecipitation](#)
- [Flow Cytometry](#)
- [Cell Culture](#)

SNAP25 Antibody (aa151-200) - Images



Western blot of extracts from Raw264.7 cells, treated with EGF 200 ng/ml 30', using SNAP25 Antibody.



Anti-SNAP / SNAP25 antibody IHC of human brain, cortex.

SNAP25 Antibody (aa151-200) - Background

t-SNARE involved in the molecular regulation of neurotransmitter release. May play an important role in the synaptic function of specific neuronal systems. Associates with proteins involved in vesicle docking and membrane fusion. Regulates plasma membrane recycling through its interaction with CENPF.

SNAP25 Antibody (aa151-200) - References

- Bark I.C., et al. Gene 139:291-292(1994).
Zhao N., et al. Gene 145:313-314(1994).
Jagadish M.N., et al. Biochem. J. 317:945-954(1996).
Kalnine N., et al. Submitted (OCT-2004) to the EMBL/GenBank/DDBJ databases.
Ota T., et al. Nat. Genet. 36:40-45(2004).