

**PKMYT1 Antibody (aa49-98)**  
**Rabbit Polyclonal Antibody**  
**Catalog # ALS15416**

## Specification

---

### PKMYT1 Antibody (aa49-98) - Product Information

Application	WB, IHC
Primary Accession	<a href="#">O99640</a>
Reactivity	Human
Host	Rabbit
Clonality	Polyclonal
Calculated MW	55kDa KDa

### PKMYT1 Antibody (aa49-98) - Additional Information

Gene ID 9088

#### Other Names

Membrane-associated tyrosine- and threonine-specific cdc2-inhibitory kinase, 2.7.11.1, Myt1 kinase, PKMYT1, MYT1

#### Target/Specificity

MYT1 (Ab-83) Antibody detects endogenous levels of total MYT1 protein.

#### Reconstitution & Storage

Store at -20°C for up to one year.

#### Precautions

PKMYT1 Antibody (aa49-98) is for research use only and not for use in diagnostic or therapeutic procedures.

### PKMYT1 Antibody (aa49-98) - Protein Information

Name PKMYT1

Synonyms MYT1

#### Function

Acts as a negative regulator of entry into mitosis (G2 to M transition) by phosphorylation of the CDK1 kinase specifically when CDK1 is complexed to cyclins (PubMed:<a href="http://www.uniprot.org/citations/10373560" target="\_blank">10373560</a>, PubMed:<a href="http://www.uniprot.org/citations/10504341" target="\_blank">10504341</a>, PubMed:<a href="http://www.uniprot.org/citations/9001210" target="\_blank">9001210</a>, PubMed:<a href="http://www.uniprot.org/citations/9268380" target="\_blank">9268380</a>). Mediates phosphorylation of CDK1 predominantly on 'Thr-14'. Also involved in Golgi fragmentation (PubMed:<a href="http://www.uniprot.org/citations/9001210" target="\_blank">9001210</a>, PubMed:<a href="http://www.uniprot.org/citations/9268380" target="\_blank">9268380</a>). May be involved in phosphorylation of CDK1 on 'Tyr-15' to a lesser degree, however tyrosine

kinase activity is unclear and may be indirect (PubMed:<a href="http://www.uniprot.org/citations/9001210" target="\_blank">9001210</a>, PubMed:<a href="http://www.uniprot.org/citations/9268380" target="\_blank">9268380</a>).

#### Cellular Location

Endoplasmic reticulum membrane; Peripheral membrane protein. Golgi apparatus membrane; Peripheral membrane protein

#### Volume

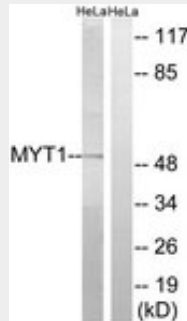
50  $\mu$ l

### PKMYT1 Antibody (aa49-98) - Protocols

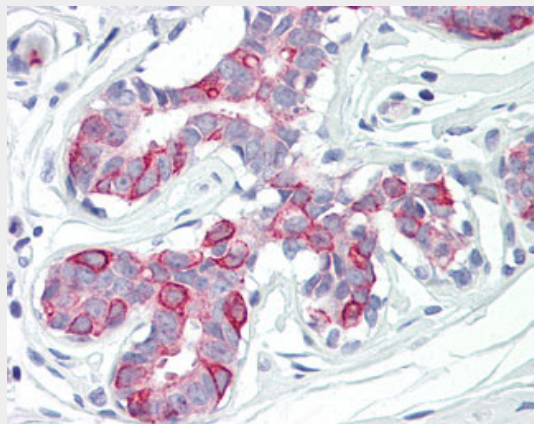
Provided below are standard protocols that you may find useful for product applications.

- [Western Blot](#)
- [Blocking Peptides](#)
- [Dot Blot](#)
- [Immunohistochemistry](#)
- [Immunofluorescence](#)
- [Immunoprecipitation](#)
- [Flow Cytometry](#)
- [Cell Culture](#)

### PKMYT1 Antibody (aa49-98) - Images



Western blot of extracts from HeLa cells, using MYT1 (Ab-83) Antibody.



Anti-PKMYT1 antibody IHC of human breast.

### PKMYT1 Antibody (aa49-98) - Background

Acts as a negative regulator of entry into mitosis (G2 to M transition) by phosphorylation of the CDK1 kinase specifically when CDK1 is complexed to cyclins. Mediates phosphorylation of CDK1 predominantly on 'Thr-14'. Also involved in Golgi fragmentation. May be involved in phosphorylation of CDK1 on 'Tyr-15' to a lesser degree, however tyrosine kinase activity is unclear and may be indirect. May be a downstream target of Notch signaling pathway during eye development.

#### **PKMYT1 Antibody (aa49-98) - References**

- Booher R.N., et al. J. Biol. Chem. 272:22300-22306(1997).  
Liu F., et al. Mol. Cell. Biol. 17:571-583(1997).  
Ota T., et al. Nat. Genet. 36:40-45(2004).  
Martin J., et al. Nature 432:988-994(2004).  
Mural R.J., et al. Submitted (SEP-2005) to the EMBL/GenBank/DDBJ databases.