

**SNAP23 / SNAP-23 Antibody (Internal)**  
**Goat Polyclonal Antibody**  
**Catalog # ALS15384**

**Specification**

---

**SNAP23 / SNAP-23 Antibody (Internal) - Product Information**

Application	WB
Primary Accession	<a href="#">O00161</a>
Reactivity	Human, Monkey
Host	Goat
Clonality	Polyclonal
Calculated MW	23kDa KDa

**SNAP23 / SNAP-23 Antibody (Internal) - Additional Information**

**Gene ID** 8773

**Other Names**

Synaptosomal-associated protein 23, SNAP-23, Vesicle-membrane fusion protein SNAP-23, SNAP23

**Target/Specificity**

Human SNAP23. This antibody is expected to recognize both reported isoforms (NP\_003816.2; NP\_570710.1).

**Reconstitution & Storage**

Store at -20°C. Minimize freezing and thawing.

**Precautions**

SNAP23 / SNAP-23 Antibody (Internal) is for research use only and not for use in diagnostic or therapeutic procedures.

**SNAP23 / SNAP-23 Antibody (Internal) - Protein Information**

**Name** SNAP23

**Function**

Essential component of the high affinity receptor for the general membrane fusion machinery and an important regulator of transport vesicle docking and fusion.

**Cellular Location**

Cell membrane; Peripheral membrane protein. Cell membrane; Lipid-anchor. Synapse, synaptosome. Note=Mainly localized to the plasma membrane

**Tissue Location**

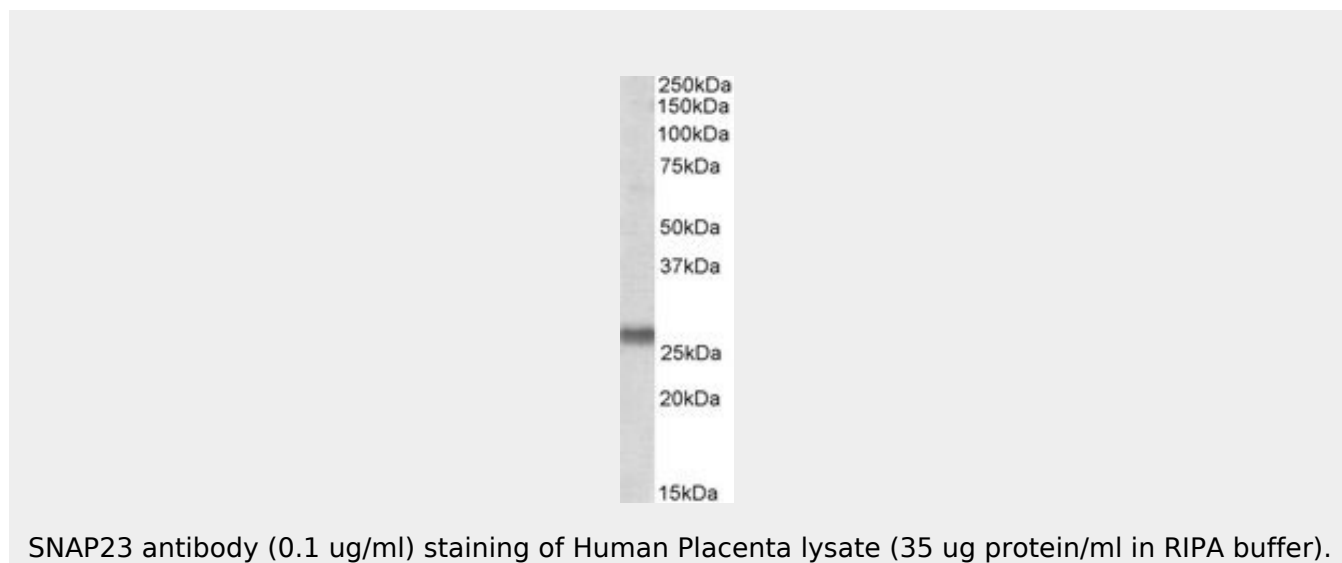
Ubiquitous. Highest levels where found in placenta.

## SNAP23 / SNAP-23 Antibody (Internal) - Protocols

Provided below are standard protocols that you may find useful for product applications.

- [Western Blot](#)
- [Blocking Peptides](#)
- [Dot Blot](#)
- [Immunohistochemistry](#)
- [Immunofluorescence](#)
- [Immunoprecipitation](#)
- [Flow Cytometry](#)
- [Cell Culture](#)

## SNAP23 / SNAP-23 Antibody (Internal) - Images



## SNAP23 / SNAP-23 Antibody (Internal) - Background

Essential component of the high affinity receptor for the general membrane fusion machinery and an important regulator of transport vesicle docking and fusion.

## SNAP23 / SNAP-23 Antibody (Internal) - References

- Ravichandran V., et al. *J. Biol. Chem.* 271:13300-13303(1996).  
Mollinedo F., et al. *Biochem. Biophys. Res. Commun.* 231:808-812(1997).  
Lazo P.A., et al. *Hum. Genet.* 108:211-215(2001).  
Kalnine N., et al. Submitted (MAY-2003) to the EMBL/GenBank/DDBJ databases.  
Ebert L., et al. Submitted (JUN-2004) to the EMBL/GenBank/DDBJ databases.