

**PLN / Phospholamban Antibody (N-Terminus)**  
**Goat Polyclonal Antibody**  
**Catalog # ALS15382**

**Specification**

---

**PLN / Phospholamban Antibody (N-Terminus) - Product Information**

Application	WB, IHC
Primary Accession	<a href="#">P26678</a>
Reactivity	Human, Mouse, Rat, Rabbit, Monkey, Pig, Horse, Bovine, Dog
Host	Goat
Clonality	Polyclonal
Calculated MW	6kDa KDa

**PLN / Phospholamban Antibody (N-Terminus) - Additional Information**

**Gene ID** 5350

**Other Names**

Cardiac phospholamban, PLB, PLN, PLB

**Target/Specificity**

Human PLN / Phospholamban.

**Reconstitution & Storage**

Store at -20°C. Minimize freezing and thawing.

**Precautions**

PLN / Phospholamban Antibody (N-Terminus) is for research use only and not for use in diagnostic or therapeutic procedures.

**PLN / Phospholamban Antibody (N-Terminus) - Protein Information**

**Name** PLN ([HGNC:9080](#))

**Synonyms** PLB

**Function**

Reversibly inhibits the activity of ATP2A2 in cardiac sarcoplasmic reticulum by decreasing the apparent affinity of the ATPase for Ca(2+) (PubMed:[28890335](http://www.uniprot.org/citations/28890335)). Modulates the contractility of the heart muscle in response to physiological stimuli via its effects on ATP2A2. Modulates calcium re-uptake during muscle relaxation and plays an important role in calcium homeostasis in the heart muscle. The degree of ATP2A2 inhibition depends on the oligomeric state of PLN. ATP2A2 inhibition is alleviated by PLN phosphorylation. Controls intracellular Ca(2+) levels in elongated spermatids. May play a role in germ cell differentiation (By similarity).

**Cellular Location**

Endoplasmic reticulum membrane; Single-pass membrane protein. Sarcoplasmic reticulum membrane; Single-pass membrane protein. Mitochondrion membrane {ECO:0000250|UniProtKB:A4IFH6}; Single-pass membrane protein. Membrane {ECO:0000250|UniProtKB:P61014}; Single-pass membrane protein. Note=Colocalizes with HAX1 at the endoplasmic reticulum (PubMed:17241641). Colocalizes with DMPK at the sarcoplasmic reticulum (PubMed:15598648).

#### Tissue Location

Heart muscle (at protein level).

#### PLN / Phospholamban Antibody (N-Terminus) - Protocols

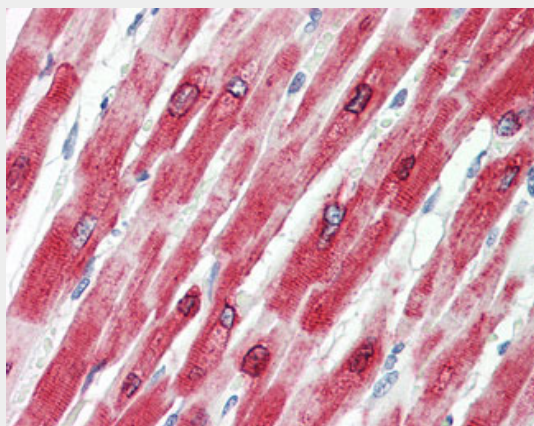
Provided below are standard protocols that you may find useful for product applications.

- [Western Blot](#)
- [Blocking Peptides](#)
- [Dot Blot](#)
- [Immunohistochemistry](#)
- [Immunofluorescence](#)
- [Immunoprecipitation](#)
- [Flow Cytometry](#)
- [Cell Culture](#)

#### PLN / Phospholamban Antibody (N-Terminus) - Images



PLN antibody (0.03 ug/ml) staining of Human Heart lysate (35 ug protein/ml in RIPA buffer).



Anti-PLN / Phospholamban antibody IHC of human heart.

### **PLN / Phospholamban Antibody (N-Terminus) - Background**

Reversibly inhibits the activity of ATP2A2 in cardiac sarcoplasmic reticulum by decreasing the apparent affinity of the ATPase for Ca(2+). Modulates the contractility of the heart muscle in response to physiological stimuli via its effects on ATP2A2. Modulates calcium re-uptake during muscle relaxation and plays an important role in calcium homeostasis in the heart muscle. The degree of ATP2A2 inhibition depends on the oligomeric state of PLN. ATP2A2 inhibition is alleviated by PLN phosphorylation.

### **PLN / Phospholamban Antibody (N-Terminus) - References**

- Fujii J.,et al.J. Biol. Chem. 266:11669-11675(1991).
- Salvatore C.A.,et al.Submitted (MAR-1991) to the EMBL/GenBank/DDBJ databases.
- McTiernan C.F.,et al.J. Mol. Cell. Cardiol. 31:679-692(1999).
- Minamisawa S.,et al.Biochem. Biophys. Res. Commun. 304:1-4(2003).
- Kaliman P.,et al.J. Biol. Chem. 280:8016-8021(2005).