

**CGA / hCG Alpha Antibody (clone ME.111)**  
**Mouse Monoclonal Antibody**  
**Catalog # ALS15376**

**Specification**

---

**CGA / hCG Alpha Antibody (clone ME.111) - Product Information**

Application	IHC
Primary Accession	<a href="#">P01215</a>
Reactivity	Human
Host	Mouse
Clonality	Monoclonal
Calculated MW	13kDa KDa

**CGA / hCG Alpha Antibody (clone ME.111) - Additional Information**

**Gene ID** 1081

**Other Names**

Glycoprotein hormones alpha chain, Anterior pituitary glycoprotein hormones common subunit alpha, Choriogonadotropin alpha chain, Chorionic gonadotrophin subunit alpha, CG-alpha, Follicle-stimulating hormone alpha chain, FSH-alpha, Follitropin alpha chain, Luteinizing hormone alpha chain, LSH-alpha, Lutropin alpha chain, Thyroid-stimulating hormone alpha chain, TSH-alpha, Thyrotropin alpha chain, CGA

**Target/Specificity**

Recognizes human FSH $\alpha$ . This antibody is specific for FSH-alpha, as a monomer or in connection with the alpha/beta dimer of FSH. This antibody does not recognize FSH-beta.

**Reconstitution & Storage**

Long term: -20°C; Short term: +4°C. Avoid repeat freeze-thaw cycles.

**Precautions**

CGA / hCG Alpha Antibody (clone ME.111) is for research use only and not for use in diagnostic or therapeutic procedures.

**CGA / hCG Alpha Antibody (clone ME.111) - Protein Information**

**Name** CGA

**Function**

Shared alpha chain of the active heterodimeric glycoprotein hormones thyrotropin/thyroid stimulating hormone/TSH, lutropin/luteinizing hormone/LH, follitropin/follicle stimulating hormone/FSH and choriogonadotropin/CG. These hormones bind specific receptors on target cells that in turn activate downstream signaling pathways.

**Cellular Location**

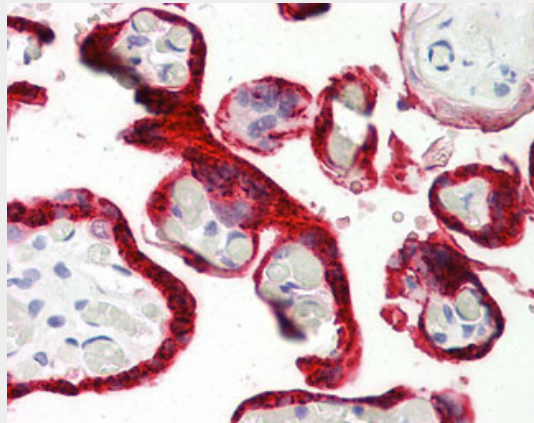
Secreted

## **CGA / hCG Alpha Antibody (clone ME.111) - Protocols**

Provided below are standard protocols that you may find useful for product applications.

- [Western Blot](#)
- [Blocking Peptides](#)
- [Dot Blot](#)
- [Immunohistochemistry](#)
- [Immunofluorescence](#)
- [Immunoprecipitation](#)
- [Flow Cytometry](#)
- [Cell Culture](#)

## **CGA / hCG Alpha Antibody (clone ME.111) - Images**



Anti-CGA / hCG antibody IHC of human placenta.

## **CGA / hCG Alpha Antibody (clone ME.111) - References**

- Fiddes J.C., et al. *Nature* 281:351-356(1979).  
Miyoshi I., et al. *Nippon Rinsho* 52:940-947(1994).  
Fiddes J.C., et al. *J. Mol. Appl. Genet.* 1:3-18(1981).  
Birken S., et al. *J. Biol. Chem.* 256:1816-1823(1981).  
Sairam M.R., et al. *Can. J. Biochem.* 55:755-760(1977).