

ACPP / PAP Antibody (Internal)
Goat Polyclonal Antibody
Catalog # ALS15366**Specification**

ACPP / PAP Antibody (Internal) - Product Information

Application	WB, IHC
Primary Accession	P15309
Reactivity	Human, Mouse, Rat, Rabbit, Hamster, Monkey, Bovine, Dog
Host	Goat
Clonality	Polyclonal
Calculated MW	45kDa KDa

ACPP / PAP Antibody (Internal) - Additional Information**Gene ID 55****Other Names**

Prostatic acid phosphatase, PAP, 3.1.3.2, 5'-nucleotidase, 5'-NT, 3.1.3.5, Ecto-5'-nucleotidase, Thiamine monophosphatase, TMPase, PAPf39, ACPP

Target/Specificity

Human ACPP. This antibody is expected to recognize both isoforms (NP_001090.2; NP_001127666.1).

Reconstitution & Storage

Store at -20°C. Minimize freezing and thawing.

Precautions

ACPP / PAP Antibody (Internal) is for research use only and not for use in diagnostic or therapeutic procedures.

ACPP / PAP Antibody (Internal) - Protein Information**Name** ACP3 ([HGNC:125](#))**Synonyms** ACPP**Function**A non-specific tyrosine phosphatase that dephosphorylates a diverse number of substrates under acidic conditions (pH 4-6) including alkyl, aryl, and acyl orthophosphate monoesters and phosphorylated proteins (PubMed: [10506173](http://www.uniprot.org/citations/10506173) target="_blank">10506173, PubMed: [15280042](http://www.uniprot.org/citations/15280042) target="_blank">15280042, PubMed: [20498373](http://www.uniprot.org/citations/20498373) target="_blank">20498373, PubMed: [9584846](http://www.uniprot.org/citations/9584846) target="_blank">9584846). Has lipid phosphatase activity and inactivates lysophosphatidic acid in seminal plasma (PubMed: [10506173](http://www.uniprot.org/citations/10506173))

target="_blank">10506173, PubMed:15280042).

Cellular Location

[Isoform 1]: Secreted

Tissue Location

Highly expressed in the prostate, restricted to glandular and ductal epithelial cells. Also expressed in bladder, kidney, pancreas, lung, cervix, testis and ovary. Weak expression in a subset of pancreatic islet cells, squamous epithelia, the pilosebaceous unit, colonic neuroendocrine cells and skin adnexal structures. Low expression in prostate carcinoma cells and tissues

ACPP / PAP Antibody (Internal) - Protocols

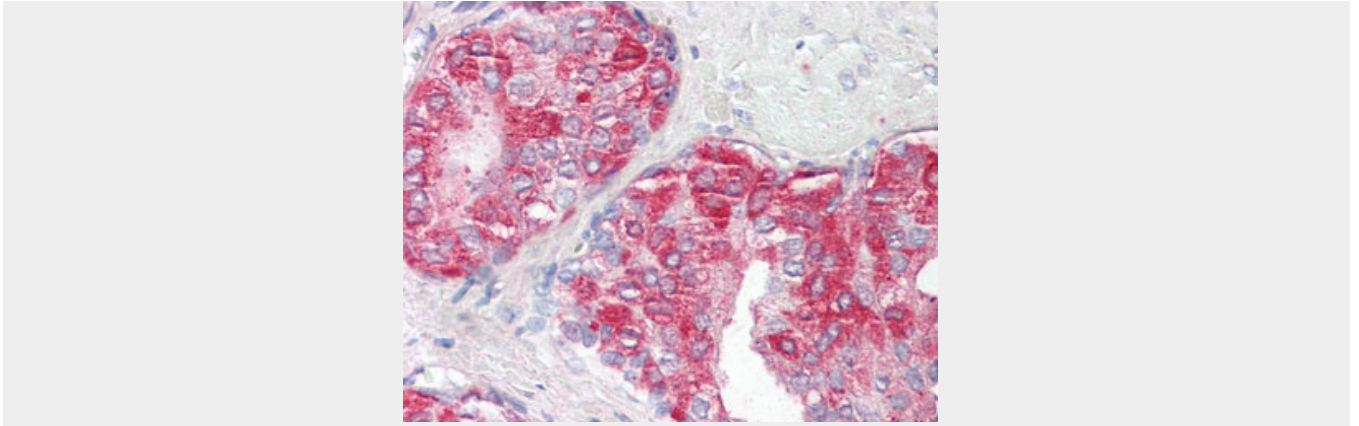
Provided below are standard protocols that you may find useful for product applications.

- [Western Blot](#)
- [Blocking Peptides](#)
- [Dot Blot](#)
- [Immunohistochemistry](#)
- [Immunofluorescence](#)
- [Immunoprecipitation](#)
- [Flow Cytometry](#)
- [Cell Culture](#)

ACPP / PAP Antibody (Internal) - Images



ACPP antibody (0.3 ug/ml) staining of Human Prostate lysate (35 ug protein/ml in RIPA buffer).



Anti-ACPP antibody IHC of human prostate.

ACPP / PAP Antibody (Internal) - Background

A non-specific tyrosine phosphatase that dephosphorylates a diverse number of substrates under acidic conditions (pH 4-6) including alkyl, aryl, and acyl orthophosphate monoesters and phosphorylated proteins. Has lipid phosphatase activity and inactivates lysophosphatidic acid in seminal plasma.

ACPP / PAP Antibody (Internal) - References

- Sharief F.S., et al. *Biochem. Biophys. Res. Commun.* 184:1468-1476(1992).
- van Etten R.L., et al. *J. Biol. Chem.* 266:2313-2319(1991).
- Sharief F.S., et al. *Biochem. Biophys. Res. Commun.* 160:79-86(1989).
- Vihko P., et al. *FEBS Lett.* 236:275-281(1988).
- Tailor P.G., et al. *Nucleic Acids Res.* 18:4928-4928(1990).