

**CAV3 / Caveolin 3 Antibody (N-Terminus)**  
**Goat Polyclonal Antibody**  
**Catalog # ALS15365****Specification**

---

**CAV3 / Caveolin 3 Antibody (N-Terminus) - Product Information**

Application	WB, IHC
Primary Accession	<a href="#">P56539</a>
Reactivity	Human, Monkey, Horse, Bovine, Dog
Host	Goat
Clonality	Polyclonal
Calculated MW	17kDa KDa

**CAV3 / Caveolin 3 Antibody (N-Terminus) - Additional Information****Gene ID** 859**Other Names**

Caveolin-3, M-caveolin, CAV3

**Target/Specificity**

Human CAV3 / Caveolin 3. Reported variants represent identical protein (NP\_001225.1; NP\_203123.1).

**Reconstitution & Storage**

Store at -20°C. Minimize freezing and thawing.

**Precautions**

CAV3 / Caveolin 3 Antibody (N-Terminus) is for research use only and not for use in diagnostic or therapeutic procedures.

**CAV3 / Caveolin 3 Antibody (N-Terminus) - Protein Information****Name** CAV3**Function**

May act as a scaffolding protein within caveolar membranes. Interacts directly with G-protein alpha subunits and can functionally regulate their activity. May also regulate voltage-gated potassium channels. Plays a role in the sarcolemma repair mechanism of both skeletal muscle and cardiomyocytes that permits rapid resealing of membranes disrupted by mechanical stress (By similarity). Mediates the recruitment of CAVIN2 and CAVIN3 proteins to the caveolae (PubMed:<a href="http://www.uniprot.org/citations/19262564" target="\_blank">19262564</a>).

**Cellular Location**

Golgi apparatus membrane; Peripheral membrane protein. Cell membrane {ECO:0000250|UniProtKB:P51638}; Peripheral membrane protein. Membrane, caveola {ECO:0000250|UniProtKB:P51637}; Peripheral membrane protein. Cell membrane, sarcolemma {ECO:0000250|UniProtKB:P51637}. Note=Potential hairpin-like structure in the membrane.

Membrane protein of caveolae (By similarity)

#### Tissue Location

Expressed predominantly in muscle.

### CAV3 / Caveolin 3 Antibody (N-Terminus) - Protocols

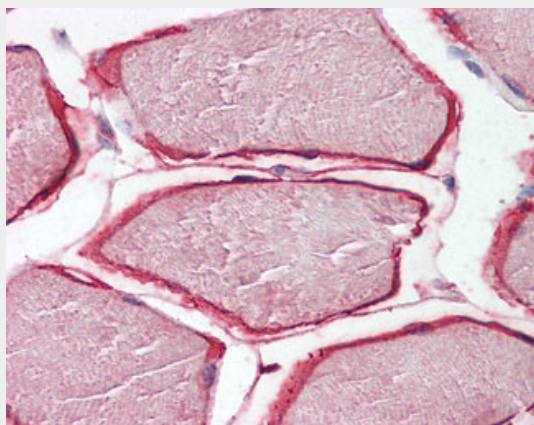
Provided below are standard protocols that you may find useful for product applications.

- [Western Blot](#)
- [Blocking Peptides](#)
- [Dot Blot](#)
- [Immunohistochemistry](#)
- [Immunofluorescence](#)
- [Immunoprecipitation](#)
- [Flow Cytometry](#)
- [Cell Culture](#)

### CAV3 / Caveolin 3 Antibody (N-Terminus) - Images



CAV3 antibody (0.3 ug/ml) staining of Human Heart lysate (35 ug protein/ml in RIPA buffer).



Anti-Caveolin 3 antibody IHC of human skeletal muscle.

### CAV3 / Caveolin 3 Antibody (N-Terminus) - Background

May act as a scaffolding protein within caveolar membranes. Interacts directly with G-protein

alpha subunits and can functionally regulate their activity. May also regulate voltage-gated potassium channels. Plays a role in the sarcolemma repair mechanism of both skeletal muscle and cardiomyocytes that permits rapid resealing of membranes disrupted by mechanical stress.

#### **CAV3 / Caveolin 3 Antibody (N-Terminus) - References**

- Minetti C., et al. Nat. Genet. 18:365-368(1998).  
Biederer C., et al. Biochim. Biophys. Acta 1406:5-9(1998).  
McNally E.M., et al. Hum. Mol. Genet. 7:871-877(1998).  
Ota T., et al. Nat. Genet. 36:40-45(2004).  
Muzny D.M., et al. Nature 440:1194-1198(2006).