

CREB1 / CREB Antibody
Rabbit Polyclonal Antibody
Catalog # ALS15347**Specification**

CREB1 / CREB Antibody - Product Information

Application	IHC
Primary Accession	P16220
Reactivity	Human, Mouse, Rat
Host	Rabbit
Clonality	Polyclonal
Calculated MW	37kDa KDa

CREB1 / CREB Antibody - Additional Information**Gene ID** 1385**Other Names**

Cyclic AMP-responsive element-binding protein 1, CREB-1, cAMP-responsive element-binding protein 1, CREB1

Target/Specificity

Rat CREB1 / CREB

Reconstitution & Storage

Store at -20°C.

Precautions

CREB1 / CREB Antibody is for research use only and not for use in diagnostic or therapeutic procedures.

CREB1 / CREB Antibody - Protein Information**Name** CREB1**Function**

Phosphorylation-dependent transcription factor that stimulates transcription upon binding to the DNA cAMP response element (CRE), a sequence present in many viral and cellular promoters (By similarity). Transcription activation is enhanced by the TORC coactivators which act independently of Ser-119 phosphorylation (PubMed: <http://www.uniprot.org/citations/14536081> target="_blank">14536081). Involved in different cellular processes including the synchronization of circadian rhythmicity and the differentiation of adipose cells (By similarity). Regulates the expression of apoptotic and inflammatory response factors in cardiomyocytes in response to ERFE-mediated activation of AKT signaling (By similarity).

Cellular Location

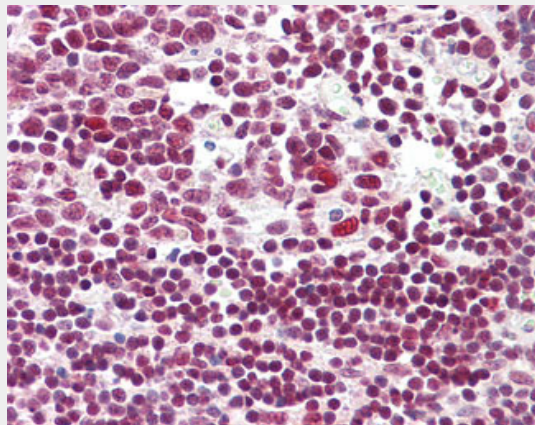
Nucleus {ECO:0000255|PROSITE-ProRule:PRU00312, ECO:0000255|PROSITE-ProRule:PRU00978, ECO:0000269|PubMed:12552083}

CREB1 / CREB Antibody - Protocols

Provided below are standard protocols that you may find useful for product applications.

- [Western Blot](#)
- [Blocking Peptides](#)
- [Dot Blot](#)
- [Immunohistochemistry](#)
- [Immunofluorescence](#)
- [Immunoprecipitation](#)
- [Flow Cytometry](#)
- [Cell Culture](#)

CREB1 / CREB Antibody - Images



Anti-CREB1 / CREB antibody IHC of human tonsil.

CREB1 / CREB Antibody - Background

Phosphorylation-dependent transcription factor that stimulates transcription upon binding to the DNA cAMP response element (CRE), a sequence present in many viral and cellular promoters. Transcription activation is enhanced by the TORC coactivators which act independently of Ser-133 phosphorylation. Involved in different cellular processes including the synchronization of circadian rhythmicity and the differentiation of adipose cells.

CREB1 / CREB Antibody - References

- Berkowitz L.A., et al. Proc. Natl. Acad. Sci. U.S.A. 87:5258-5262(1990).
Yoshimura T., et al. EMBO J. 9:2537-2542(1990).
Waeber G., et al. Trans. Assoc. Am. Physicians 103:28-37(1990).
Hoeffler J.P., et al. Science 242:1430-1433(1988).
Short M.L., et al. Nucleic Acids Res. 19:4290-4290(1991).