

Ubiquitin Antibody
Rabbit Polyclonal Antibody
Catalog # ALS15337**Specification**

Ubiquitin Antibody - Product Information

Application	IF, IHC
Reactivity	Human, Mouse, Rat, Rabbit, Hamster, Monkey, Pig, Chicken, Sheep, Yeast, Xenopus, Bovine, Guinea Pig, Fish, Dog, Drosophila
Host	Rabbit
Clonality	Polyclonal

Ubiquitin Antibody - Additional Information**Target/Specificity**

Recognizes ~10kD kD corresponding to free ubiquitin of human, mouse, monkey, bovine and rat origins. It also recognizes ubiquinated proteins.

Reconstitution & Storage

Short term 4°C, long term aliquot and store at -20°C, avoid freeze thaw cycles.

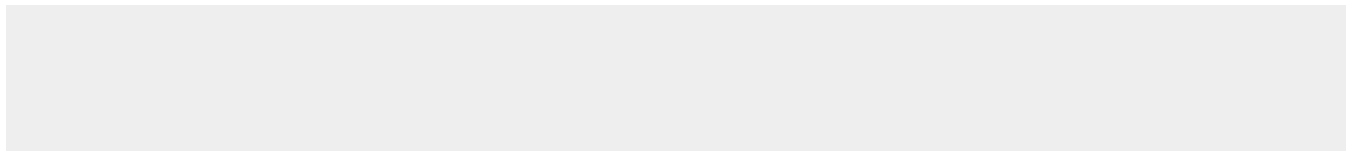
Precautions

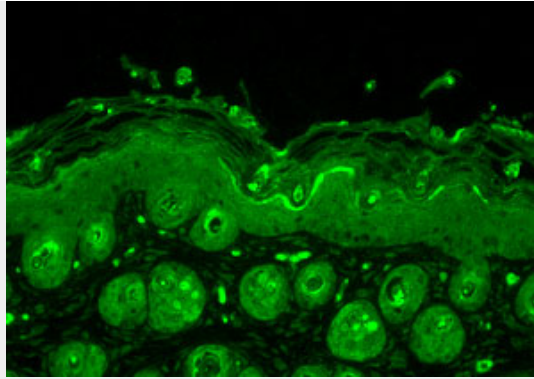
Ubiquitin Antibody is for research use only and not for use in diagnostic or therapeutic procedures.

Ubiquitin Antibody - Protein Information**Ubiquitin Antibody - Protocols**

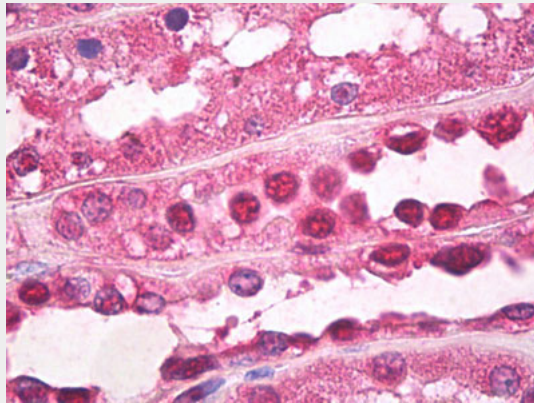
Provided below are standard protocols that you may find useful for product applications.

- [Western Blot](#)
- [Blocking Peptides](#)
- [Dot Blot](#)
- [Immunohistochemistry](#)
- [Immunofluorescence](#)
- [Immunoprecipitation](#)
- [Flow Cytometry](#)
- [Cell Culture](#)

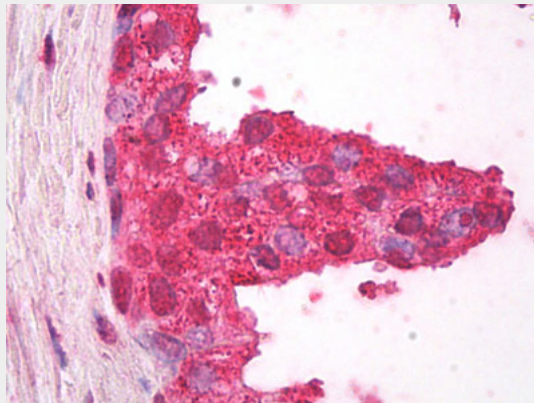
Ubiquitin Antibody - Images



Ubiquitin, Mouse back skin.



Anti-Ubiquitin antibody IHC of human kidney.



Anti-Ubiquitin antibody IHC of human prostate.