

HSP70 / Heat Shock Protein 70 Antibody
Rabbit Polyclonal Antibody
Catalog # ALS15333**Specification**

HSP70 / Heat Shock Protein 70 Antibody - Product Information

Application	WB, IHC
Reactivity	Human, Mouse, Rat, Hamster, Monkey, Pig, Sheep, Bovine, Guinea Pig, Fish, Dog
Host	Rabbit
Clonality	Polyclonal

HSP70 / Heat Shock Protein 70 Antibody - Additional Information**Target/Specificity**

Detects a 70kD protein corresponding to the molecular mass of inducible hsp70 on SDS PAGE immunoblots. May cross-react with Hsc70 at lower dilutions.

Reconstitution & Storage

Short term 4°C, long term aliquot and store at -20°C, avoid freeze thaw cycles.

Precautions

HSP70 / Heat Shock Protein 70 Antibody is for research use only and not for use in diagnostic or therapeutic procedures.

HSP70 / Heat Shock Protein 70 Antibody - Protein Information**Volume**

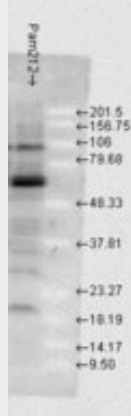
50 µl

HSP70 / Heat Shock Protein 70 Antibody - Protocols

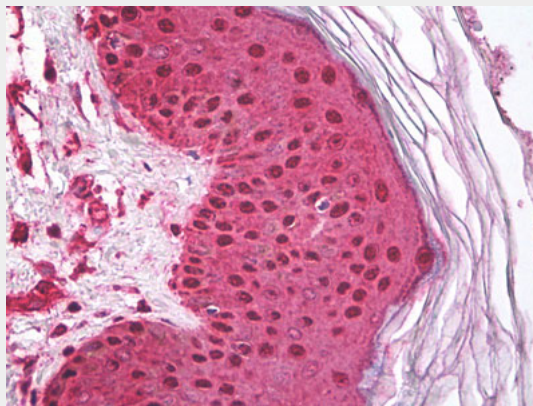
Provided below are standard protocols that you may find useful for product applications.

- [Western Blot](#)
- [Blocking Peptides](#)
- [Dot Blot](#)
- [Immunohistochemistry](#)
- [Immunofluorescence](#)
- [Immunoprecipitation](#)
- [Flow Cytometry](#)
- [Cell Culture](#)

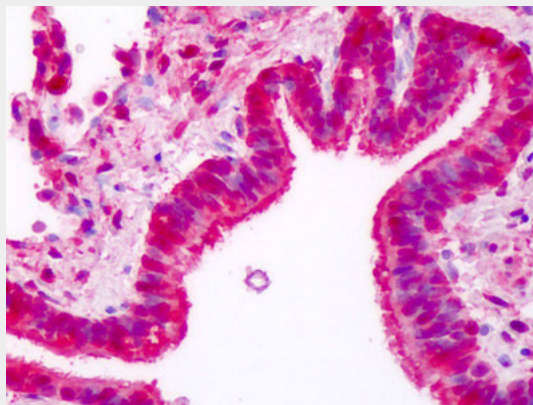
HSP70 / Heat Shock Protein 70 Antibody - Images

Western blot analysis of Hsp70 in Pam212 cells using a 1:1000 dilution of HSP70 / Heat Shock...



Anti-HSPA1A / HSP72 antibody IHC of human skin.



Anti-HSPA1A / HSP72 antibody IHC of human lung, respiratory epithelium.