

**B2M / Beta 2 Microglobulin Antibody (clone B2M-01)**  
**Mouse Monoclonal Antibody**  
**Catalog # ALS15309**

**Specification**

---

**B2M / Beta 2 Microglobulin Antibody (clone B2M-01) - Product Information**

Application	IHC
Primary Accession	<a href="#">P61769</a>
Reactivity	Human, Mouse, Rabbit, Chicken, Bovine, Dog
Host	Mouse
Clonality	Monoclonal
Calculated MW	14kDa KDa

**B2M / Beta 2 Microglobulin Antibody (clone B2M-01) - Additional Information**

**Gene ID** 567

**Other Names**

Beta-2-microglobulin, Beta-2-microglobulin form pl 5.3, B2M

**Target/Specificity**

reacts with beta2-microglobulin (b2M) associated with cell-surfaceMHC Class I molecules and other membrane antigens as well as with solublebeta2-microglobulin. b2M is a 12 kDa Ig like glycoprotein expressed on lymphocytes,thymocytes, monocytes, granu ...

**Reconstitution & Storage**

Short term 4°C, long term aliquot and store at -20°C, avoid freeze thaw cycles.

**Precautions**

B2M / Beta 2 Microglobulin Antibody (clone B2M-01) is for research use only and not for use in diagnostic or therapeutic procedures.

**B2M / Beta 2 Microglobulin Antibody (clone B2M-01) - Protein Information**

**Name** B2M ([HGNC:914](#))

**Function**

Component of the class I major histocompatibility complex (MHC). Involved in the presentation of peptide antigens to the immune system. Exogenously applied M.tuberculosis EsxA or EsxA-EsxB (or EsxA expressed in host) binds B2M and decreases its export to the cell surface (total protein levels do not change), probably leading to defects in class I antigen presentation (PubMed:<a href="http://www.uniprot.org/citations/25356553" target="\_blank">25356553</a>).

**Cellular Location**

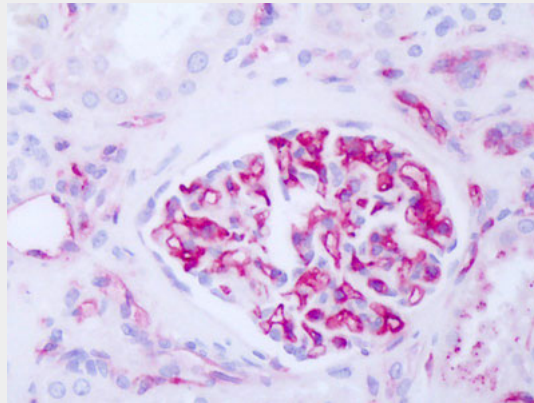
Secreted. Cell surface. Note=Detected in serum and urine (PubMed:1336137, PubMed:7554280). {ECO:0000269|PubMed:7554280, ECO:0000269|Ref.6}

## **B2M / Beta 2 Microglobulin Antibody (clone B2M-01) - Protocols**

Provided below are standard protocols that you may find useful for product applications.

- [Western Blot](#)
- [Blocking Peptides](#)
- [Dot Blot](#)
- [Immunohistochemistry](#)
- [Immunofluorescence](#)
- [Immunoprecipitation](#)
- [Flow Cytometry](#)
- [Cell Culture](#)

## **B2M / Beta 2 Microglobulin Antibody (clone B2M-01) - Images**



Anti-B2M / Beta 2 Microglobulin antibody IHC of human kidney, glomerulus.

## **B2M / Beta 2 Microglobulin Antibody (clone B2M-01) - Background**

Component of the class I major histocompatibility complex (MHC). Involved in the presentation of peptide antigens to the immune system.

## **B2M / Beta 2 Microglobulin Antibody (clone B2M-01) - References**

- Guessow D.,et al.J. Immunol. 139:3132-3138(1987).  
He X.H.,et al.Sheng Wu Gong Cheng Xue Bao 20:99-103(2004).  
Matsumoto K.,et al.Submitted (DEC-1998) to the EMBL/GenBank/DDBJ databases.  
Tan J.,et al.Submitted (SEP-2005) to the EMBL/GenBank/DDBJ databases.  
Zhao Z.,et al.Submitted (JUN-1998) to the EMBL/GenBank/DDBJ databases.