

GAPDH Antibody (clone 4G5)
Mouse Monoclonal Antibody
Catalog # ALS15296**Specification**

GAPDH Antibody (clone 4G5) - Product Information

Application	IHC
Primary Accession	P04406
Reactivity	Human, Mouse, Rat, Rabbit, Pig, Goat, Bovine, Fish, Dog, Cat
Host	Mouse
Clonality	Monoclonal
Calculated MW	36kDa KDa

GAPDH Antibody (clone 4G5) - Additional Information**Gene ID** 2597**Other Names**Glyceraldehyde-3-phosphate dehydrogenase, GAPDH, 1.2.1.12, Peptidyl-cysteine S-nitrosylase
GAPDH, 2.6.99.-, GAPDH, GAPD**Target/Specificity**

Recognizes human glyceraldehyde-3-phosphate dehydrogenase (GAPDH) at 36kD. Species cross-reactivity: bovine, pig, goat, feline, rat, mouse, canine, rabbit, fish.

Reconstitution & Storage

May be stored at 4°C for short-term only. Aliquot to avoid repeated freezing and thawing. Store at -20°C. Aliquots are stable for at least 12months.

Precautions

GAPDH Antibody (clone 4G5) is for research use only and not for use in diagnostic or therapeutic procedures.

GAPDH Antibody (clone 4G5) - Protein Information**Name** GAPDH {ECO:0000303|PubMed:2987855, ECO:0000312|HGNC:HGNC:4141}**Function**

Has both glyceraldehyde-3-phosphate dehydrogenase and nitrosylase activities, thereby playing a role in glycolysis and nuclear functions, respectively (PubMed:11724794, PubMed:3170585). Glyceraldehyde-3-phosphate dehydrogenase is a key enzyme in glycolysis that catalyzes the first step of the pathway by converting D- glyceraldehyde 3-phosphate (G3P) into 3-phospho-D-glyceroyl phosphate (PubMed:11724794, PubMed:3170585). Modulates the organization and assembly of the cytoskeleton (By

similarity). Facilitates the CHP1- dependent microtubule and membrane associations through its ability to stimulate the binding of CHP1 to microtubules (By similarity). Component of the GAIT (gamma interferon-activated inhibitor of translation) complex which mediates interferon-gamma-induced transcript-selective translation inhibition in inflammation processes (PubMed:23071094). Upon interferon-gamma treatment assembles into the GAIT complex which binds to stem loop-containing GAIT elements in the 3'-UTR of diverse inflammatory mRNAs (such as ceruplasmin) and suppresses their translation (PubMed:23071094). Also plays a role in innate immunity by promoting TNF-induced NF-kappa-B activation and type I interferon production, via interaction with TRAF2 and TRAF3, respectively (PubMed:23332158, PubMed:27387501). Participates in nuclear events including transcription, RNA transport, DNA replication and apoptosis (By similarity). Nuclear functions are probably due to the nitrosylase activity that mediates cysteine S-nitrosylation of nuclear target proteins such as SIRT1, HDAC2 and PRKDC (By similarity).

Cellular Location

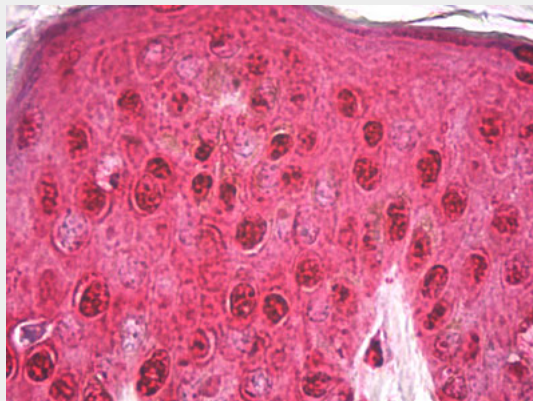
Cytoplasm, cytosol. Nucleus {ECO:0000250|UniProtKB:P04797}. Cytoplasm, perinuclear region. Membrane Cytoplasm, cytoskeleton {ECO:0000250|UniProtKB:P04797} Note=Translocates to the nucleus following S-nitrosylation and interaction with SIAH1, which contains a nuclear localization signal (By similarity). Postnuclear and Perinuclear regions (PubMed:12829261) {ECO:0000250|UniProtKB:P04797, ECO:0000269|PubMed:12829261}

GAPDH Antibody (clone 4G5) - Protocols

Provided below are standard protocols that you may find useful for product applications.

- [Western Blot](#)
- [Blocking Peptides](#)
- [Dot Blot](#)
- [Immunohistochemistry](#)
- [Immunofluorescence](#)
- [Immunoprecipitation](#)
- [Flow Cytometry](#)
- [Cell Culture](#)

GAPDH Antibody (clone 4G5) - Images



Anti-GAPDH antibody IHC of human skin.

GAPDH Antibody (clone 4G5) - Background

Has both glyceraldehyde-3-phosphate dehydrogenase and nitrosylase activities, thereby playing a role in glycolysis and nuclear functions, respectively. Participates in nuclear events including transcription, RNA transport, DNA replication and apoptosis. Nuclear functions are probably due to the nitrosylase activity that mediates cysteine S-nitrosylation of nuclear target proteins such as SIRT1, HDAC2 and PRKDC. Modulates the organization and assembly of the cytoskeleton. Facilitates the CHP1-dependent microtubule and membrane associations through its ability to stimulate the binding of CHP1 to microtubules (By similarity). Glyceraldehyde-3-phosphate dehydrogenase is a key enzyme in glycolysis that catalyzes the first step of the pathway by converting D-glyceraldehyde 3-phosphate (G3P) into 3-phospho-D- glyceroyl phosphate. Component of the GAIT (gamma interferon- activated inhibitor of translation) complex which mediates interferon-gamma-induced transcript-selective translation inhibition in inflammation processes. Upon interferon-gamma treatment assembles into the GAIT complex which binds to stem loop-containing GAIT elements in the 3'-UTR of diverse inflammatory mRNAs (such as ceruplasmin) and suppresses their translation.

GAPDH Antibody (clone 4G5) - References

- Hanauer A., et al. EMBO J. 3:2627-2633(1984).
Arcari P., et al. Nucleic Acids Res. 12:9179-9189(1984).
Tso J.Y., et al. Nucleic Acids Res. 13:2485-2502(1985).
Tokunaga K., et al. Cancer Res. 47:5616-5619(1987).
Allen R.W., et al. J. Biol. Chem. 262:649-653(1987).