

**EDNRA / Endothelin A Receptor Antibody (aa378-427)**  
**Rabbit Polyclonal Antibody**  
**Catalog # ALS15255**

**Specification**

---

**EDNRA / Endothelin A Receptor Antibody (aa378-427) - Product Information**

Application	IF, WB
Primary Accession	<a href="#">P25101</a>
Reactivity	Human, Mouse
Host	Rabbit
Clonality	Polyclonal
Calculated MW	49kDa KDa

**EDNRA / Endothelin A Receptor Antibody (aa378-427) - Additional Information**

**Gene ID** 1909

**Other Names**

Endothelin-1 receptor, Endothelin A receptor, ET-A, ETA-R, hET-AR, EDNRA, ETA, ETRA

**Target/Specificity**

EDNRA Antibody detects endogenous levels of total EDNRA protein.

**Reconstitution & Storage**

Short term 4°C, long term aliquot and store at -20°C, avoid freeze thaw cycles.

**Precautions**

EDNRA / Endothelin A Receptor Antibody (aa378-427) is for research use only and not for use in diagnostic or therapeutic procedures.

**EDNRA / Endothelin A Receptor Antibody (aa378-427) - Protein Information**

**Name** EDNRA ([HGNC:3179](#))

**Synonyms** ETA, ETRA

**Function**

Receptor for endothelin-1. Mediates its action by association with G proteins that activate a phosphatidylinositol-calcium second messenger system. The rank order of binding affinities for ET-A is: ET1 > ET2 >> ET3.

**Cellular Location**

Cell membrane; Multi-pass membrane protein.

**Tissue Location**

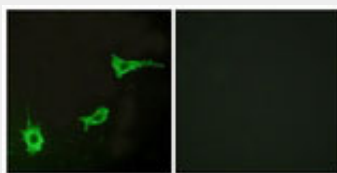
Isoform 1, isoform 3 and isoform 4 are expressed in a variety of tissues, with highest levels in the aorta and cerebellum, followed by lung, atrium and cerebral cortex, lower levels in the placenta, kidney, adrenal gland, duodenum, colon, ventricle and liver but no expression in umbilical vein

endothelial cells. Within the placenta, isoform 1, isoform 2, isoform 3 and isoform 4 are expressed in the villi and stem villi vessels.

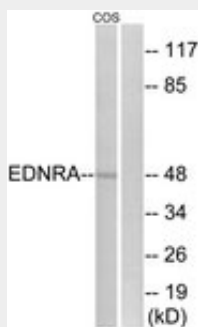
**Volume**100  $\mu$ l**EDNRA / Endothelin A Receptor Antibody (aa378-427) - Protocols**

Provided below are standard protocols that you may find useful for product applications.

- [Western Blot](#)
- [Blocking Peptides](#)
- [Dot Blot](#)
- [Immunohistochemistry](#)
- [Immunofluorescence](#)
- [Immunoprecipitation](#)
- [Flow Cytometry](#)
- [Cell Culture](#)

**EDNRA / Endothelin A Receptor Antibody (aa378-427) - Images**

Immunofluorescence of LOVO cells, using EDNRA Antibody.



Western blot of extracts from COS7 cells, using EDNRA Antibody.

**EDNRA / Endothelin A Receptor Antibody (aa378-427) - Background**

Receptor for endothelin-1. Mediates its action by association with G proteins that activate a phosphatidylinositol- calcium second messenger system. The rank order of binding affinities for ET-A is: ET1 > ET2 >> ET3.

**EDNRA / Endothelin A Receptor Antibody (aa378-427) - References**

Adachi M., et al. *Biochem. Biophys. Res. Commun.* 180:1265-1272(1991).  
Cyr C., et al. *Biochem. Biophys. Res. Commun.* 181:184-190(1991).  
Hosoda K., et al. *FEBS Lett.* 287:23-26(1991).  
Arai H., et al. *Jpn. Circ. J.* 56:1303-1307(1992).  
Elshourbagy N.A., et al. *J. Biol. Chem.* 268:3873-3879(1993).

