

STRADB / ALS2CR2 Antibody (aa200-250)
Rabbit Polyclonal Antibody
Catalog # ALS15251**Specification**

STRADB / ALS2CR2 Antibody (aa200-250) - Product Information

Application	WB
Primary Accession	O9C0K7
Reactivity	Human, Horse, Bovine, Dog
Host	Rabbit
Clonality	Polyclonal
Calculated MW	47kDa KDa

STRADB / ALS2CR2 Antibody (aa200-250) - Additional Information**Gene ID** 55437**Other Names**

STE20-related kinase adapter protein beta, STRAD beta, Amyotrophic lateral sclerosis 2 chromosomal region candidate gene 2 protein, CALS-21, ILP-interacting protein, Pseudokinase ALS2CR2, STRADB, ALS2CR2, ILPIP

Target/Specificity

Human STRADB

Reconstitution & Storage

Store at 4°C for short term applications. For long term storage, aliquot and store at -20°C.

Precautions

STRADB / ALS2CR2 Antibody (aa200-250) is for research use only and not for use in diagnostic or therapeutic procedures.

STRADB / ALS2CR2 Antibody (aa200-250) - Protein Information**Name** STRADB**Synonyms** ALS2CR2, ILPIP**Function**

Pseudokinase which, in complex with CAB39/MO25 (CAB39/MO25alpha or CAB39L/MO25beta), binds to and activates STK11/LKB1. Adopts a closed conformation typical of active protein kinases and binds STK11/LKB1 as a pseudosubstrate, promoting conformational change of STK11/LKB1 in an active conformation (By similarity).

Cellular Location

Nucleus. Cytoplasm

Tissue Location

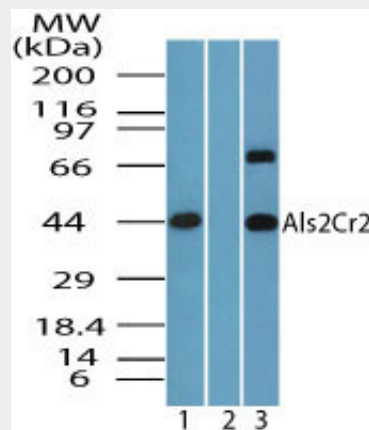
Highly expressed in heart, skeletal muscle, testis, liver and colon.

STRADB / ALS2CR2 Antibody (aa200-250) - Protocols

Provided below are standard protocols that you may find useful for product applications.

- [Western Blot](#)
- [Blocking Peptides](#)
- [Dot Blot](#)
- [Immunohistochemistry](#)
- [Immunofluorescence](#)
- [Immunoprecipitation](#)
- [Flow Cytometry](#)
- [Cell Culture](#)

STRADB / ALS2CR2 Antibody (aa200-250) - Images



Western blot of Als2Cr2 in human brain lysate in the 1) absence and 2) presence of immunizing...

STRADB / ALS2CR2 Antibody (aa200-250) - Background

Pseudokinase which, in complex with CAB39/MO25 (CAB39/MO25alpha or CAB39L/MO25beta), binds to and activates STK11/LKB1. Adopts a closed conformation typical of active protein kinases and binds STK11/LKB1 as a pseudosubstrate, promoting conformational change of STK11/LKB1 in an active conformation (By similarity).

STRADB / ALS2CR2 Antibody (aa200-250) - References

- Hadano S., et al. Genomics 71:200-213(2001).
Sanna M.G., et al. J. Biol. Chem. 277:30454-30462(2002).
Zhang C., et al. Submitted (DEC-1998) to the EMBL/GenBank/DDBJ databases.
Ota T., et al. Nat. Genet. 36:40-45(2004).
Hillier L.W., et al. Nature 434:724-731(2005).